



## Welcome!



Despite the weather it has been another great week here at Wildern with lots of events for students including the first sporting fixture of 2023, whole year photographs and our new extra curricular timetable for this term. The weather has tried to dampen our spirits but students have been well prepared with their coats and umbrellas!

The start of a school term always lends itself to a kindly reminder about how to contact us when you have a concern. You can email us on [wikdem@wildern.org](mailto:wikdem@wildern.org) (or using the envelope icon below) or phone us on 01489 783473 and your message will be passed on to the relevant member of staff.

Sometimes things happen in school and as parents you support your child at home, and don't feel the need to report it to us. We would urge you to report any issues to your child's tutor, as if they are left, occasionally they can escalate when some minor intervention in school may have prevented it. Sometimes the first time we hear about issues can be when things have gone further than they needed to and parents and students are then upset and feel school have done little to help. We value our strap line that **Every Student Matters**.

We would much rather parents get in touch with any concerns or niggles you have, however minor you feel they are, so that we can be aware of this, put support in place for your child and look at possible next steps.

In March we shared some guidance on [how to contact the right person](#) with your query as well as our [Parent communication guidelines](#).

Our staff team, from our Receptionist through to our teaching staff work tirelessly to provide not only great learning experiences within the classroom but also to extend these experiences through extra-curricular activities in the form of clubs and trips. However, this is only achieved by having staff who are happy and want to work at our school, who want to make a difference for our students, your child(ren) and who know they have your support no matter what.

The vast majority of our communication with parents reflects the brilliant relationships we have and we want to continue to build on this. However, we, as a school, can only look after our students, your child(ren) the very best we can if we take care of our staff, ensuring that they are treated with respect and kindness. It is what we expect of ourselves in our dealings with you and your child(ren).



### In this issue...

- [Dates for your diary](#), [Communications](#), [Reminders](#), [90 years of Wildern](#), [Spotlight \(Sustainability\)](#), [Keeping safe \(Student services & coffee mornings\)](#), [Hot food menu](#), [Sports results & fixtures](#), [Extra-Curricular](#), [E-Safety](#)

### Dates for your diary

| Date                                     | Activity  | Year Groups     |
|--|---|-----------------|
| Monday 16 January                        | Week 4  | All years       |
| Tuesday 17 January                       | Year 10 exam walkthrough                                    | Year 10         |
| Tuesday 17 January                       | Year 11 English RAP Parents info evening (invitation event) | Year 11         |
| Wednesday 18 January                     | Dragon's Den day (careers event)                            | Year 7          |
| Wednesday 18 January                     | Parent coffee morning 11:45am -12:30pm                      | All years       |
| Thursday 19 January                      | KS4 Acoustic Night  | Year 9, 10 & 11 |
| Thursday 19 January                      | WINK: pathways (virtual)                                    | Year 8          |
| Monday 23 January                        | Week 8  | All years       |
| Monday 23 January - Wednesday 1 February | Year 10 practice exams                                      | Year 10         |
| Wednesday 25 January                     | Year 11 Drama showcase                                      | Year 11         |
| Thursday 26 January                      | WINK evening: E-safety                                      | All years       |
| Thursday 26 - Friday 27 January          | Year 11 Food & Nutrition practical assessment               | Year 11         |
| Monday 30 January                        | Week 11   | All years       |
| Monday 30 January                        | Natural History Museum trip                                 | Year 7          |
| Thursday 2 February                      | Year 8 Parents evening                                      | Year 8          |
| Friday 3 February                        | Year 11 Dance practical assessment                          | Year 11         |

[back to the top](#)

### Communications

**All Years**  
[Parent Governor Vacancy](#) and [Application form](#)  
[German exchange host family opportunity](#) - open to all students (not just German language students)

**Year 7**  
 There are no letters for Year 7

**Year 8**  
[WINK Pathways](#) on Thursday 19 January

**Year 9**  
[Vaccinations: Diphtheria/Tetanus/Polio and Meningitis ACWY on 24 February](#)  
[Consent info for vaccination](#) and [School Age Immunisation Service information](#)  
[Education for Life](#) [vacation trip to see And Juliet](#)

**Year 10**  
 There are no letters for Year 10

**Year 11**  
[Drama and Performing Arts showcase evening](#)

[back to the top](#)

### Sparks Maths : video from Mr Sleeman to help you support your child with self-study



**Wildern asks...**

Did you find this video helpful?

If we were to include more information videos like this in future, what subjects would you like them about?

[back to the top](#)

### Reminders

**All Years**  
[Help with cost of living](#)

**Year 7**

**Careers:** On Wednesday 18 January, Year 7 will be taking part in the Dragon's Den Day as part of their Careers education. They will be designing a product for NHS patients and will be working in small groups and presenting to their tutor groups. A select number will present in the hall on the stage in front of the 'Dragons' during a period 5 assembly.

**English, Maths and Science** are holding a combined **self study support session** for Years 7 and 8 in the Red Dining Hall after school on **Wednesday** afternoons. Your child can attend for help with their self study in any of the Core subjects.

**Year 8**

**English, Maths and Science** are holding a combined **self study support session** for Years 7 and 8 in the Red Dining Hall after school on **Wednesday** afternoons. Your child can attend for help with their self study in any of the Core subjects.

**Year 9**

There are no reminders for Year 9

**Year 10**

**Island April 2023 Trip Meeting:** There is a trip information evening Wednesday 17th January 5-6pm in the Main Hall. We will start at 5pm promptly and hope to be finished well before 6pm. This will give you an opportunity to see the itinerary, hear travel plans and meet staff attending the trip. We look forward to seeing you there.

**Year 11**  
[Ofqual letter to students](#)  
[Prepare to Perform Newsletter](#)  
[Extra Support Programme \(ESP\) information](#)

**ESP timetable - Spring 1**  
**Tuesday 17 January:** Dance or PE  
**Wednesday 18 January:** Computer Science

**English:** To support students with their English revision, Ms Rooney is uploading optional tasks to Google Classroom each week which can be completed alongside self study. Please see the topic 'English Revision Tasks' on your child's English Google Classroom for more details. English revision guides for Language and Literature are still available for £1.50 each with a completed form from Finance.

[back to the top](#)

## 90 Years of Wildern

In each edition of the Wildern Weekly leading up to our 90th Birthday in April, we will be sharing small snippets of the school's history with you.

Did you know... back in the 1930s, prior to the school's opening, the school had wanted to be called the 'William Cobbett School' but the Education Authority at the time refused on the grounds that they did not name schools after famous people.

William Cobbett was an English pamphleteer, journalist, politician, and farmer born in Farnham, Surrey. You can find out more about him [here](#)



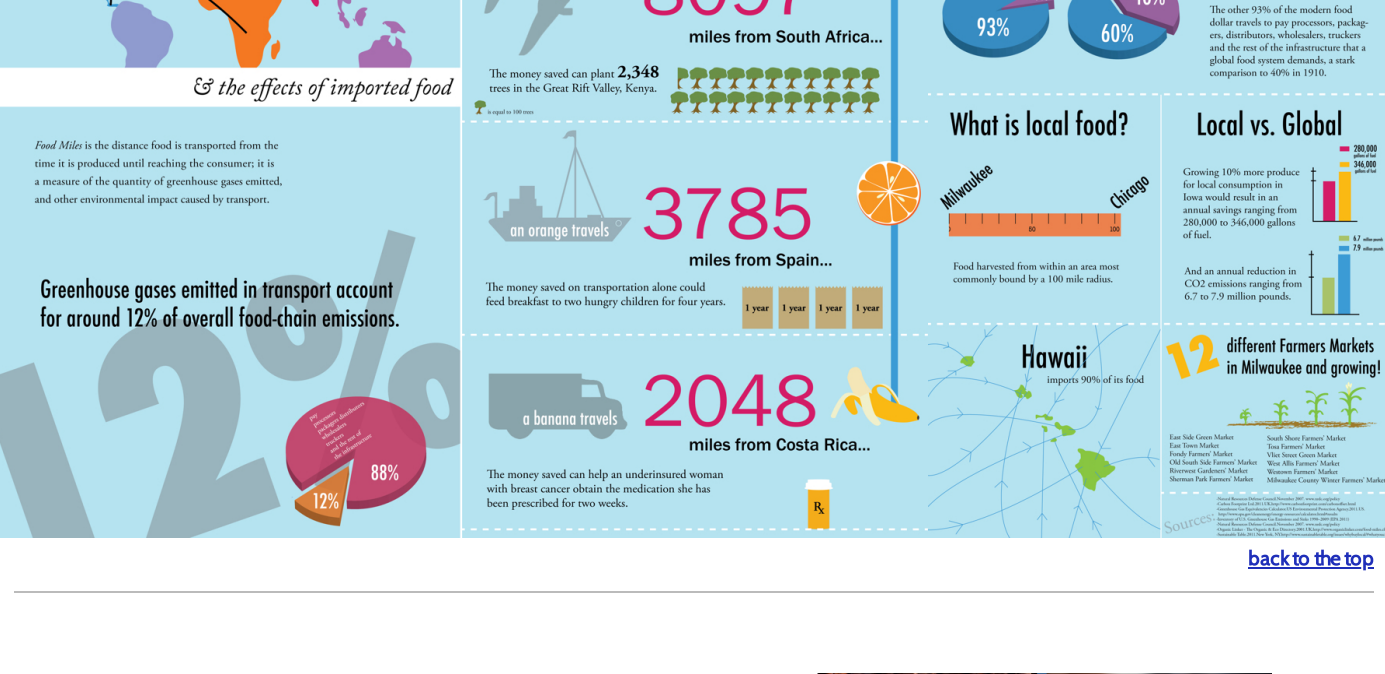
[back to the top](#)

### Spotlight

#### Sustainability - top tip - shop local and seasonal produce

One of the ways to support sustainable living is to consider how far food travels to get to our plate. Many suggest that we should consider different protein sources and consume a variety of protein across a week in order to support sustainability and our carbon footprint.

Another way is to consider how far some of our food is traveling to get to us. As an island, we know that in the UK we cannot feed ourselves and rely on imports for many products. However, it is worth bearing where products come when we are purchasing food if we are considering reducing our carbon footprint.



[back to the top](#)

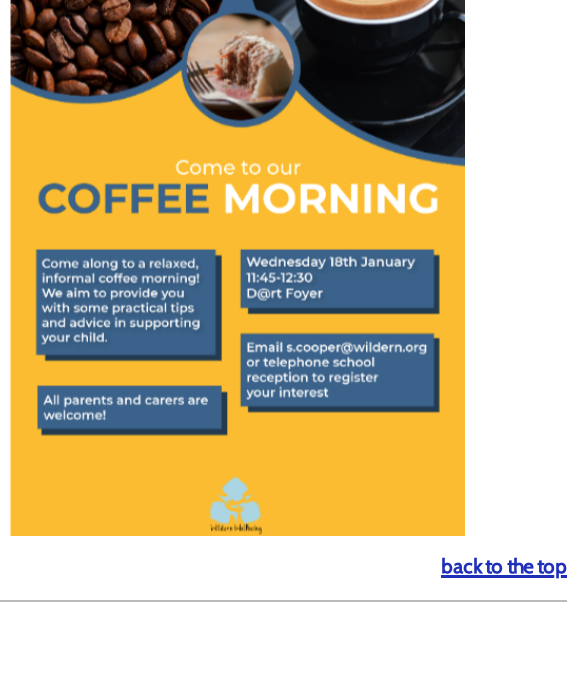
### Keeping Safe

#### Student services

We are always open between 8:45am and 3:30pm. The best times for students to drop in are:

- 11:10-11:25am - Breakfast
- 1:30-1:55pm - Lunchtime
- 3:00-3:15pm - After school

We are holding a coffee morning that all parents are welcome to attend where you can hear about some practical tips and advice to support your child.



[back to the top](#)

### Hot Food Menu

Dan and his catering team can adapt the majority of meals to any dietary needs if they know in advance (your child can speak to them by visiting the kitchen before 8:30am that day). Main/grill vegetarian options are always available - just ask Dan and his team.

|           | Main   | Grill  |
|-----------|--|--|
| Monday    | Sausage and cheese bap or bubble and squeak bap with hash browns | Loaded fries with BBQ chicken and guacamole        |
| Tuesday   | Chilli con carne with rice and garlic bread                      | Tex-mex or veggie hotdog with salsa and nachos (v) |
| Wednesday | Cheese and bacon turnover with wedges                            | Hawaiian or veggie pizza with Cajun fries (v)      |
| Thursday  | Curry of the day   | Chicken & sweet potato curry, with naan bread      |
| Friday    | Fish of the day  | Celebration of Chinese New Year                    |

\* correct at time of sending, but may be subject to change  
[back to the top](#)

### Sporting Results

| Date       | Sport                | Opposition   | Year Groups | Result    |
|------------|----------------------|--|-------------|-----------|
| 9 January  | Year 7 Boys Football | Shoreham Academy   | 7           | 3-1 loss  |
| 10 January | U16 Basketball       | Weston Secondary School  | 10 & 11     | Cancelled |
| 10 January | U14 Netball          | Central league event against various schools, held at Redbridge School | 7 & 8       | Cancelled |
| 12 January | U14 Basketball       | Weston Secondary School  | 8 & 9       | Cancelled |



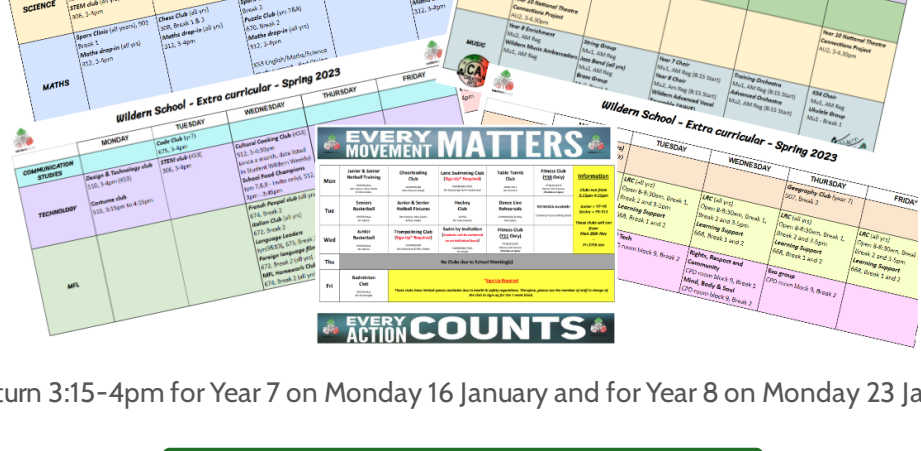
### Sporting Fixtures

| Date       | Sport                | Opposition                   | Year Groups |
|------------|----------------------|------------------------------|-------------|
| 17 January | U16 Basketball       | Oasis Academy Sholing        | 10 & 9      |
| 17 January | U14 Netball          | Central league event         | 7 & 8       |
| 19 January | U14 Basketball       | Swanmore College             | 8 & 9       |
| 23 January | Year 8 Boys Football | St George's Catholic College | 8           |
| 24 January | Year 9 Boys Football | Oasis Academy Mayfield       | 9           |
| 24 January | U16 Basketball       | Wyvern College               | 10 & 11     |

[back to the top](#)

### Extra Curricular

Please see our updated clubs timetable for the Spring term. This includes focus groups which are running as part of our student leadership programme. More details can be found on our website using the button below. The library is always available to students after school as well.



Drama Club will return 3:15-4pm for Year 7 on Monday 16 January and for Year 8 on Monday 23 January.

#### Extra Curricular Timetable Spring 2023

[back to the top](#)

### E-Safety

#### What Parents Need to Know about Social Bots

Bots are computer-generated accounts which sit on social media, masquerading as humans. While many are harmless or even have good intentions, others are designed to extort, sell products, spread propaganda or bully human users. Bots - short for 'robots' of course - are often confused with state-funded troll accounts; the two can be difficult to tell apart. However, if the results are the same, then both should be treated similarly.

In the guide, you'll find tips on a number of potential risks such as cyberbullying, extortion and astroturfing.

**What Parents and Carers Need to Know about SOCIAL BOTS**

WHAT ARE SOCIAL BOTS? Social bots are computer-generated accounts that interact with humans on social media. They can be used for a variety of purposes, including spreading propaganda, influencing public opinion, and conducting cyberbullying.

HOW TO SPOT SOCIAL BOTS:  
 - Unusually high number of followers/friends  
 - No profile picture or a blurry one  
 - No bio or a generic one  
 - No posts or a very low number of posts  
 - No interactions with other users

WHAT TO DO NEXT:  
 - Report the bot to the platform  
 - Block the bot  
 - Do not engage with the bot  
 - Do not share personal information

[back to the top](#)

