



Every Student Matters  
Every Moment Counts



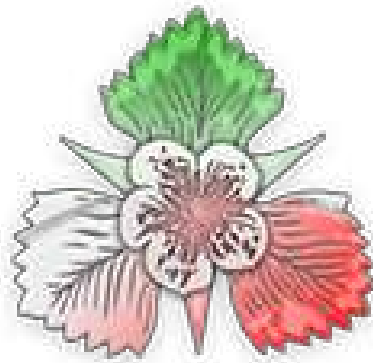
“Your future is in your hands.  
You just have to plant the  
right seeds.”

Master Choa Kok Sui  
Chemical engineer and businessman

# Parent Handbook Year 8 The Year of Choice

**Wildern School**

**Home – School  
Partnership**



**Care, Opportunity, Quality  
‘Every Student Matters, Every Moment  
Counts’**

September 2022

# Contents

	Page
A message from the Headteacher	3
<b>CARE</b>	<b>4</b>
Pastoral and Safeguarding	5-6
Home-School Partnership	7
Wildern Attributes	8
Diversity	9
#itsnotok	9
A Rights Respecting School	10
School Uniform	11-12
Prohibited/Banned Items	13
Attendance & Punctuality	14
Contacting the School	15
Member Login Area of School Website	16
Key Dates	17
Student Services	18
First Aid	19
E-Safety	19
Wildern as a Community School	20
<b>QUALITY</b>	<b>21</b>
The Wildern Way	22
Our Curriculum	23 - 24
The Pathway Process	24
Teaching and Learning	25
Class Codes	26
Self-study	27
How Can I support my child's learning?	27 - 28
Curriculum Teams	28
The Curriculum - Subjects	29 - 59
Feedback Practice	60
How can I support my child's Learning	61
Wildern Steps	62
WAD Reports	62
Behaviours for Learning	63 - 64
Communication with Parents	64
Reporting to Parents	64
Parents' Evening	64
Google Classroom and the Google Suite	65
Insight App	66
<b>OPPORTUNITY</b>	<b>67</b>
School Trips and Enrichment Opportunities	68
Enrichment Opportunities and Competitions	69 - 71
The House System	72
Student Leadership	73
Wildern Colours	74
Charities	75
Careers Support	76 - 77
The Learning Resource Centre	78 - 79
Wildern School Staff Structure	80

## A Message from the Headteacher

Dear Parent/Guardian,

As you are aware, at Wildern, we value our partnership with parents and we know that working together helps our young people achieve their best.

This parent handbook (whilst not definitive), is aimed at providing you with some key information that is easily accessible and to hand; rather than searching through our website. However, all information can be found on our website and/or within our members' area for parents to log into. We encourage you to use this area for support throughout the year.

To compliment this handbook and provide you with further information/learning, throughout the year we have our WINK programme for parents that will cover many aspects of school life, from the curriculum, E-Safety, Choosing Pathways to dealing with teenagers and mental health and well-being. A programme will be sent to all parents to highlight these evenings at the start of the year.

We also have the Wildern Parent INSIGHT APP which allows you to view information about your child plus to keep you up to date with all the latest news, the news section of our website, twitter feed (@wildernschool) or on instagram (@wildern\_school).

We believe that together we can ensure that our students, your children, achieve their very best and become the determined, adaptable, compassionate young people we all want them to be.

Best wishes



Ceri Oakley  
Headteacher



**“Happiness will grow if you plant the seeds of love in the garden of hope with compassion and care.”  
— Debasish Mridha**

**Pastoral**

At Wildern we place our students at the heart of the school community. We believe that all students can be successful in an environment where 'Every Student Matters, Every Moment Counts'. Wildern is a happy school, providing an atmosphere which supports students and enables success, development of character and nurtures their well-being. Our students know that they are valued as individuals with unique needs, strengths and potential and that we truly believe that our students can be the best they can.

## **Safeguarding**

Safeguarding is a term which is broader than 'child protection' and relates to the action taken to promote the welfare of children and protect them from harm. Safeguarding is defined as:

- protecting children from maltreatment
- preventing impairment of children's physical and mental health, wellbeing and development and health and development
- ensuring that children grow up in circumstances consistent with the provision of safe and effective care and
- taking action to enable all children to have the best outcomes

Safeguarding is everyone's responsibility. If you believe that a student within the Wildern School community is at risk, then please contact the school through our secure email address of: [safeguarding@wildern.org](mailto:safeguarding@wildern.org)

## Wildern School Designated Safeguarding Team

*We are all responsible for safeguarding...*

If you are concerned about the welfare or safety of anyone at school please report your concerns to the safeguarding team below, or by emailing [safeguarding@wildern.org](mailto:safeguarding@wildern.org)

			
Mr M Chance <i>Safeguarding@wildern.org</i>	Mrs C Oakley <i>Safeguarding@wildern.org</i>	Mrs N Cowan <i>Safeguarding@wildern.org</i>	Miss H Jones <i>Safeguarding@wildern.org</i>

			
Mrs K Thomas <i>Safeguarding@wildern.org</i>	Mrs J Fleeman <i>Safeguarding@wildern.org</i>	Mr G Bateman <i>Safeguarding@wildern.org</i>	Mrs S Cooper <i>Safeguarding@wildern.org</i>

	
Mrs A Chandler <i>Safeguarding@wildern.org</i>	Miss B Cooper <i>Safeguarding@wildern.org</i>

Or call main reception on:

01489 783473

and ask for a DSL.

***'Every Student Matters, Every Moment Counts'***

## Home – School Partnership



It is important that the school, the students and parents all work together to get the very best outcome for the young people who attend Wildern. By agreeing to the Home School Partnership, we are all committing to doing the best we can to support one another throughout a student's journey through school.

### As students we will:-

- Always try our very best in everything that we do.
- Maintain the highest standard of behaviour and respect towards all visitors and members of Wildern and the wider community.
- Follow all school rules including those on behaviour, uniform, punctuality and attendance.
- Uphold the behaviour for learning expectations listed in the student planner.
- Conduct ourselves in a manner that brings credit to us and the school on journeys to and from school, on school trips and in the local community.
- Follow the instructions of Prefects who act on behalf of the Headteacher.
- Take care of our environment.
- Always be honest and trustworthy.
- Be kind to each other.

### As Parents we will:-

- Ensure our child attends school, is punctual and will not take holidays during term time.
- Ensure our child is equipped for lessons.
- Provide an environment that encourages good self-study habits and support students with their home learning.
- Ensure our child is always dressed in uniform according to the school uniform policy.
- Work in partnership with the school in maintaining a high standard of behaviour, accepting and supporting the use of appropriate sanctions in line with the school's behaviour policy.
- Monitor our child's education by regularly checking and signing the school's student planner.
- Attend parental consultation meetings if required.
- Promptly notify the school of any changes in circumstances that may affect our child's well-being and their learning.
- Monitor my child's online activity and encourage the safe and appropriate use of electronic devices.
- Contact the school if we have any concerns and work with the school to resolve any issues.
- Follow the guidance for communicating with school at all times.

### As staff at Wildern School we will:-

- Nurture our students' academic progress and their social and personal development.
- Encourage a strong sense of positive personal values.
- Encourage respect and empathy for others within the school and the wider community.
- Provide a safe and supportive environment in which a system of rewards and sanctions motivates and challenges students.
- Provide a broad and balanced education at the appropriate level for each individual.
- Review progress and set self-study as an integral part of the learning process.
- Provide a high level of teaching and learning within specialist areas.
- Work in partnership with parents and the wider community.
- Communicate formally and informally regarding attendance, academic and pastoral progress.
- Ensure all members of the school community embrace the notion of Rights and Respect.



## Wildern Attributes

At Wildern, we endeavour to create a culture where students believe that their qualities and talents grow through trying something, putting in effort and learning from their mistakes. This is based on developing students' growth mindset and allows them to have a belief that with time, practice and guidance, they can achieve anything they put their mind to. We do this by creating safe environments in which our students can learn without fear of failure. Our Wildern attributes encompass this wholeheartedly.

### Reflection

We ensure our students are aware of their strengths and areas of development. Lessons include dedicated quality reflection time for students to reflect and review their work, act on feedback and redraft work to improve upon it.



### Determination

Research suggests that effort is more important than talent or innate ability and so we have high expectations of all students and what they can achieve when they try. We challenge our students to be the best they can be and encourage them to take a leap of faith even if it means falling a few times. The determination we see in students who rise to these challenges find they reap the rewards and are successful in their achievements.



### Respect

Making mistakes is hard – students fear embarrassment, criticism, humiliation. However, a safe, secure classroom environment can ensure that students see that making mistakes are part of the learning process and from them, they can develop a better understanding. We do this through modelling and by making explicit the learning outcome from mistakes. We encourage students to respect one another for engaging in the learning process not just for achieving the correct answer.



### Curiosity

There is a feeling across the world that our heroes have superhuman abilities that lead them to greatness, success, stardom. However people with a growth mindset know that even heroes have to develop their curiosity, work hard and practice for their achievements. It is said that top performers practice 1,000 hours a year and to be world-class at something takes 10 years. Therefore we allow time for our students to practice their skills. This can either be distributed (spreads out study activities over time) or interleaved (mixes different kinds of problems within a single lesson). Students who are curious often seek solutions themselves, investigating and researching something and showing great independence which prepares them for the world ahead.



### Pride

Research suggests that when students are praised for what they have accomplished through effort, practice, study and persistence, they experience a sense of achievement and have the motivation to go on and take these achievements further. We encourage our students to take pride in these efforts, including in how they present their work, how they demonstrate their learning and recognising their own achievements, avoiding comparisons to those of their peers.



### Kindness

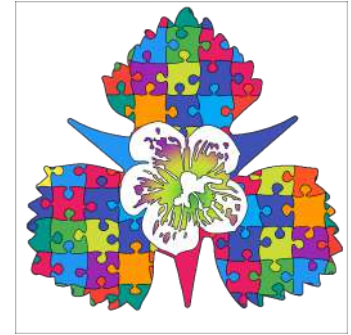
We live in a diverse community where everyone should feel welcome, included and equal. Everyone is unique and it is a combination of our differences that shape our view of the world, our perspective and our approach. In a world where the news can be dominated by acts of discrimination or violence due to someone's characteristics we must promote equality, diversity and kindness so our students grow into considerate, empathetic and caring individuals.



## Diversity

The Wildern symbol of diversity represents our beliefs that every member of our school community counts.

As set out in the Home-School Partnership we ask that students maintain the highest standard of behaviour and respect towards all members of the Wildern community and conduct themselves in a manner that brings credit to us and the school. We feel that having a sense of belonging at school can increase student emotional and physical wellbeing. This is equally as important as diversity and inclusion because all children should feel that their world is a safe place where people care about them and their needs.



To help them do this we spend time looking at and celebrating Wildern's diverse community. This is done through:

- Strong curriculum content across the school
- Student voice
- A focus group dedicated to celebrating and promoting equality and diversity
- Challenging those who aren't inclusive
- Working with agencies and charities from outside of school to support our community

Students get the opportunity to partake in activities across the school year where they are able to consider different cultures, religions, gender/sex, sexual orientation, age and disability and all potential characteristics. . Whenever you see this symbol it is communicating that we are learning about, supporting or celebrating the rich and diverse Wildern community that we are so proud of.

## #Itsnotok



Your children have every right to feel safe at school and it is important that all students are aware of when someone is being inappropriate towards them.

We are using the “#It’snotok” to promote awareness of what students need to be thinking about when they are facing unwanted sexual behaviours or contacts either in school or when out in the community.

Over the course of the school year we will be encouraging discussion through tutor time, assemblies and our strong RSE curriculum and will be sending the clear message to challenge unacceptable behaviour and say “it’s not ok”



# RRS



## Wildern: A Rights Respecting School

**BECAUSE EVERY CHILD IN THE WORLD HAS ONE THING IN COMMON. THEIR RIGHTS.**

A Rights Respecting School is one in which the UNCR is placed at the heart of everything that happens. It is a school in which students learn that with rights, come the elements of respect and responsibility.

It is a School in which students and staff work together as a partnership, student voice is valued and plays a crucial role. It is important for students to be a part of a Rights Respecting School so that they can be fully aware of rights issues and become empowered global citizens in the wider world.

### What does being a Rights Respecting School look like at Wildern?



**SOCCER AID**  
unicef



Prefects



Fairtrade



**Our 'Respect' attribute**



## School Uniform

All students are expected to uphold the high standards of the school. This is especially applicable to uniform. It is our belief that if students are appropriately dressed for school, they are in the correct mind-set for learning and the expectations this brings.

If a student is wearing incorrect uniform they will be told to correct it for the next school day and a mark will be placed on their uniform tracker. Each time a row is completed on the tracker, a sanction is put in place. Should uniform breaches happen on a regular basis, parents will be asked to attend a meeting with the DOPA to discuss a way forward as this is seen as persistent defiance.

School uniform is available to purchase from Skoolkit at 31 Leigh Road, Eastleigh, SO50 9FF or online at [www.skoolkit.co.uk](http://www.skoolkit.co.uk).

Hair must not be shorter than a Grade 2. Extreme hairstyles and hair adornment/s are not permitted. Hair must be natural in colour.

Tramlines, braiding and beads are not acceptable.

Students who have long hair must tie it back during activities where personal safety requires this.

**Plain white shirt**, not patterned, tucked into trousers. Top buttons should be done up to allow the clip-on tie to be worn.

**Bottle green "V" neck sweatshirt with school logo.**

Clip-on **school tie**.



**Plain black regular trousers**, loose fitting on the leg (imagine being able to slide a £1 coin down the trouser leg without it getting stuck!), not intentionally above the ankle. No leggings or jeans.

**Tartan skirt**, (bought from Skoolkit). Skirts must be worn to the knee. They must not be rolled up at the waist.

**Plain black socks/tights.** Socks must be worn below the knee. No leggings or footless tights.

Nail varnish, false nails and false eyelashes must **not** be worn in any year.

**Plain black leather shoes** with entirely black laces/velcro. (They must be business-like leather and polishable with no visible logos, other colours or contrasting soles). No brands of trainers are permitted, except for PE and Drama, even if black and leather. School can advise you if you are unsure that your footwear is suitable.

**Jewellery.** The only permitted items of jewellery are:

- A Watch
- ONE stud in each ear lobe. (Silver or Gold)
- No other piercing or retainer is permitted in school.
- If you allow your child to have additional piercings, please arrange for these to be done at the start of the school summer holidays so there is no need for retainers when they return to school in September. No piercings that require retainers should be undertaken at any other time of the school year, as they will not be permitted.
- The wearing of any other jewellery, including wrist bangles is not permitted. The only badges that may be worn are those issued by the school.

### Coats

Outdoor coat of plain colour and unpatterned material is preferable. Coats should be waterproof, hooded tops, tracksuit type jackets and other outdoor clothing of this type, particularly if emblazoned with logos/motifs or large lettering are not acceptable. Coats should always be worn over school jumpers, not as a replacement, and should be removed when indoors.

### Physical Education and Dance

<b><u>Compulsory PE Kit</u></b> (These items must be worn for <b>ALL</b> PE/Dance Lessons)	<b><u>Optional Extras</u></b> (These items can be added to the compulsory kit for extra warmth/comfort)
Wildern PE Polo Shirt Wildern green PE Shorts Black Sports Leggings Red Sports Socks/White Trainer Socks Appropriate Sports Trainers	Wildern PE Tracksuit Top Wildern PE Rugby Shirt Thermal mid-layers (Skins, Baselayers, Vests) Studded Boots (For outdoor activities ONLY) Gumshield (Hockey & Rugby) Shinpads (Football, Hockey, Rugby) Hat & Gloves (For outside activities ONLY)

**Tracksuit Bottoms are NO longer part of the acceptable PE kit at Wildern School.**

### Specialist Activity PE Kit

**OUTDOOR PE:** Students are encouraged to bring a towel for all outdoor PE lessons.

**SWIMMING:** Dark coloured swimming shorts/one piece swimming costume and towel.

**KS4 DANCE:** black GCSE Dance T-Shirt and plain black sports leggings or tracksuit bottoms.

**KS4 EXAMINATION PE:** Option to purchase the Exam PE black polo shirt.

All students must have sports trainers, not fashion trainers: Plimsolls, Vans, Converse are not acceptable footwear.

Students attending extra curricular sporting and dance activities will be expected to meet the same kit standards as detailed above for all sessions.



## Prohibited/Banned Items

- Knives and other weapons
- Drugs (other than prescription medication that is kept with first aid by arrangement)
- Drug paraphernalia
- Aerosol sprays
- Tippex and solvents
- Chewing gum
- Energy Drinks, including Lucozade
- Cigarettes, tobacco and other smoking paraphernalia
- E Cigarettes and vaping equipment
- Students are also advised not to bring cash or valuable possessions into school, as we cannot accept responsibility for loss or damage.
- Mobile Phones, iPads, MP3 Player, headphones and Airpods should not be visible. Such equipment, if brought into school, should be kept in the students' school bag. (If such equipment is used without permission or it is seen around the school site during break times and lunch times, it will be confiscated and if a repeat offence parents or carers will be required to collect the item from reception).

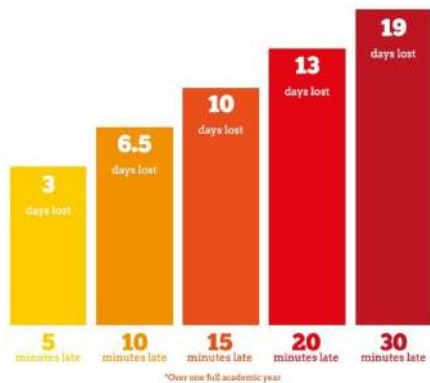
# Attendance & Punctuality

Good attendance and punctuality is vital in order for your youngster to achieve their potential. It is widely acknowledged that an attendance figure should be at 95% or higher.



Research highlights:

- An attendance rate of 90% sounds good but equates to one half day absent every week for a year. It means a youngster would miss the equivalent of 4 whole weeks of a school year.
- If this rate continues for 5 years of a child's education, it means an individual would miss the equivalent of half a school year.



Punctuality is also very important. Arriving just a few minutes late to each lesson quickly amounts to missing over a day of school. Regularly being 5 minutes late to just one lesson a day is the equivalent of missing 3 days of education.

## Lost minutes = lost learning

Taking holidays during term time will affect your child's schooling as much as any other absence and we expect parents to help us by not taking holidays during term time. Any period of leave taken without notifying school or with the schools agreement will be unauthorised leave. Exceptional leave of absence will be granted on the completion of the appropriate form and at the discretion of the Headteacher.

If your child's absence becomes a concern, then we will do all we can to support you in improving their attendance. This may involve school based support but if absence continues to be a concern, we will seek the support of the local authorities legal team or other professionals such as the school nursing team.

Please report any absence due to illness via [absence@wildern.org](mailto:absence@wildern.org) or through the 'Report Absence' feature on the Insight App under attendance. Absence needs to be reported every day that a student is away from school.

## Contacting the school

We will be pleased to discuss any student's conduct or progress at any time. Parents are welcome to make contact with us as soon as any concern arises.

<b><u>Main Reception</u></b> To report absences and for all other enquiries	01489 783473 <a href="mailto:absence@wildern.org">absence@wildern.org</a>
<b><u>Student Services</u></b>	01489 779 494
<b><u>Email</u></b> All emails will be forwarded to relevant parties	<a href="mailto:wildern@wildern.org">wildern@wildern.org</a>
First Aid Room:	01489 779445
D@rt:	01489 779471
Leisure Centre:	01489 787128

### There are several possibilities:

1. If a particular subject concerns you, write via letter/email or in the student planner (your child should then show their class teacher your message) or telephone to ask for the teacher to contact you and talk over the matter when convenient.
2. If your concern is more general or one of a pastoral matter, write/ telephone/ use the student planner to ask the Tutor to contact you to arrange a time to talk the matter over.
3. You may want to email the school if you wish to communicate with the tutor or a subject teacher. You can do this by using the following address: [wildern@wildern.org](mailto:wildern@wildern.org). This email will be forwarded to the person best placed to deal with your question.
4. If you have a more serious concern or issue to raise you may like to contact Students Services who will deal with any initial concerns and then liaise with the Director of Progress and Achievement (DoPA).
5. If for any reason you wish to talk to a Senior Member of Staff, contact the school either by telephone/ email/letter and a Senior Teacher will arrange to see you as soon as possible and, in an emergency, at very short notice.
6. The Executive Headteacher/Headteacher are always pleased to meet with parents. Should you find that after contact with other staff your concern remains, please contact either. We are all concerned with helping individuals.
7. Please note that the school will always endeavour to return telephone calls or email within 24 hours, and we will respond in writing as required within five to ten working days.
8. Please be mindful of our guidance for communicating with school, found on the website - <https://www.wildern.org/joining-us/contact-us/>



# Member Login Area of School Website

Members Link

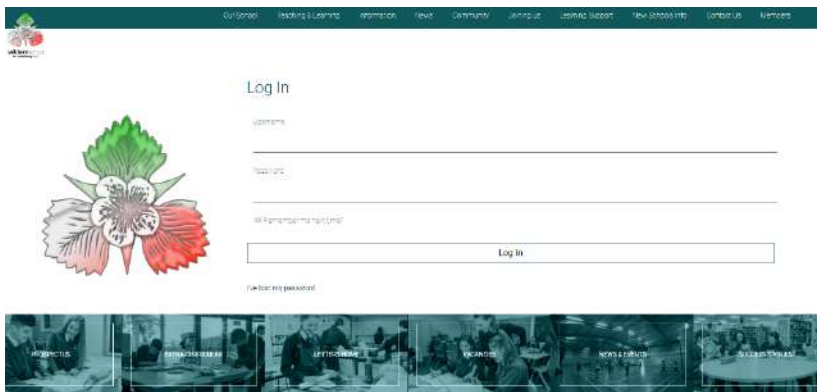


Students and Parents can login to the members' area of the school website by clicking on Member in the top right corner

Parents can login using the

Username "**parents**"

and Password "**wildern**"

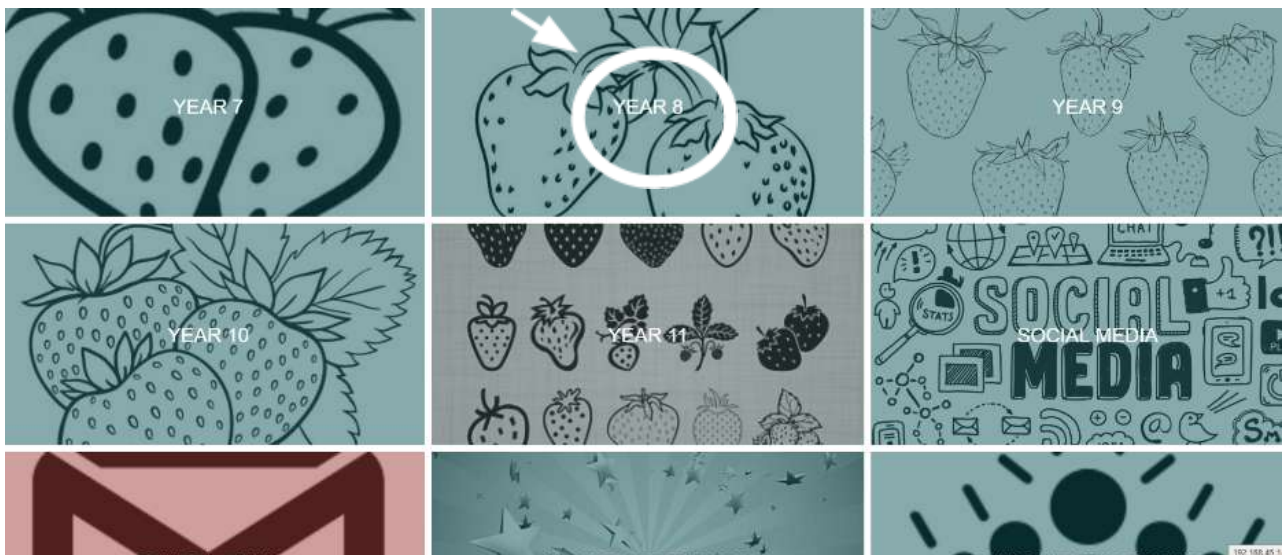


Students can login using the

Username "**student**"

and Password "**school**"

You will then find a useful grid to link you to the resources you require. Each grid has information specifically for that year group. Year 8 parents need to click on the grid that says Year 8. Inside it will open up to show you all the resources and information to support your child in Year 8. Click back to return to the previous page or use the search bar at the top of the website to find pages you are looking for.



## Key Dates

All dates are correct at the time of sending

### Term dates

#### Inset Days

Thursday 1 September 2022  
Friday 14 October 2022  
Friday 25 November 2022  
Monday 20 February 2023  
Friday 30 June 2023



**WAD dates** - More information about WAD is on pg 62

Week beginning 16 January 2023 WAD 1

Week beginning 3 July 2023 WAD 2 This will include subject exam results in steps and external GL assessment reports in English and maths

#### Other key dates

Wednesday 7 September 2022 Year 8 Curriculum Evening (Virtual event)

Thursday 2 February 2023 Year 8 Parents' Evening

Week beginning 15 May 2023 Year 8 Exams

Wednesday 19 July 2023 Year 8 Reports to parents

#### WINK Dates

WINK (Wildern Interactive nights of knowledge) events are held in the evening to inform, guide and support parents with the upcoming year that their child is experiencing. These sessions include issues that affect children of a specific age and learning opportunities to support the learned curriculum. The WINK dates for 2022/23 are:

WINK: Love Languages - Thursday 10th November 2022

WINK: Wellbeing - Thursday 17th November 2022

WINK: The effective use of EdTech to Support Learning - Thursday 8th December 2022 (Virtual Event)

WINK: Year 8 Pathways Evening - Thursday 19th January 2023 (Virtual Event)

WINK: E-Safety - Thursday 26th January 2023

WINK: Supporting your Teenager - Thursday 9th February 2023

WINK: Stretch & Challenge - Thursday 16th March 2023

WINK: Chromebooks - Thursday 4th May 2023

WINK: RSE - Thursday 18th May 2023 (Virtual Event)

WINK: How to support your child's reading - Thursday 8th June 2023

WINK: Healthy Eating - Thursday 22nd June 2023 (Virtual Event)

# Student Services

## Who are they?

The Student Services team are a support and intervention team who are skilled in offering staff, students and parents the support to ensure our students succeed in school.

## Why?

Their aim is to:

- Respond to any immediate concerns parents and carers may have
- Liaise with Directors of Progress and Achievement and teachers as necessary
- Follow up any concerns and keep parents/carers informed of progress
- Track and monitor attendance and punctuality
- Work with parents to help them support their children
- Provide bespoke interventions to support students in behaviour, well-being and health
- Work with staff to safeguard and support students
- Work closely with outside agencies to provide support 'beyond our walls'.

## How does Student Services work?

The team is made up of:



Mr G Bateman



Mrs S Cooper



Mrs A Chandlers



Ms L Duck



Miss B Cooper



Mrs R Budden

They deal with enquiries and act as a liaison between the Director of Progress and Achievement (DOPA), tutors and staff e.g. a friendship issue, mental health and wellbeing, truancy concerns, and detention matters.

Incidents will always involve the DOPA, this service is to support their work and offer a first point of contact prior to their involvement should the tutor not be able to help.

Parents can telephone Student Services directly on 01489 779494 if they have any pastoral concerns.

## First Aid

It is not uncommon for some children to become unwell, or be involved in a minor accident which requires some first aid while at school. The school has a first aid room which is administered by qualified first aiders during the school day. All students are made aware of this facility and can access this if required. If a student is unable to return to lessons after visiting the first aid room, the first aider will try and make contact with parents/guardians to arrange for the student to be collected from school. If the emergency services are required, the first aider, or another member of staff in her absence will accompany the student until parents or guardians arrive.

Following the completion of a health form prior to starting at Wildern, it is essential that the school is kept informed of any changes to a student's medical circumstance so that our records remain up to date. Parents/Guardians of children with conditions that staff need to be aware of from the first day of admission e.g nut allergies, are asked to give details to the first aider to agree procedures in the case of an emergency.

If a student has medical needs that require managing in school or that are severe or complex, the first aider will contact the parents to create a Health Care Plan.

Regular vaccinations are carried out at school by the South West Hants Immunisation Team. Parents/guardians are informed of these in advance and consent forms will be sent out by email.

### **Allergies**

There are students and staff within Wildern School that have severe food allergies to peanuts and nuts. It is important that there is a strict avoidance in order to prevent a life-threatening allergic reaction.

To reduce the chance of this occurring we ask where practically possible, you do not send your child with peanut or nut containing products to school or on school trips. We appreciate your support with these procedures.

## E-Safety

It is essential that students' safety is paramount when using ICT. Therefore, during students ICT lessons the relevant member of staff will give presentations about internet safety, email etc.



Our system allows us to block unsolicited mail as well as filter all inappropriate sites/language. Students will be strongly reminded never to contact an unknown person via the Internet. They will not be allowed to use their email address for frivolous messages, messages which discriminate against another person on any grounds whatsoever, or those which use inappropriate language. Email will be immediately withdrawn if this happens.

Wildern is providing the use of email for the electronic transfer of information for all students between home and school. As a school we wish to encourage students to learn independently in this way.

All students regularly receive updates on the latest e-safety advice and it is also on our website [here](#).

The School wifi and network traffic is continuously monitored. Alerts will be triggered for sites open on devices connecting to the wifi network.

# Wildern as a Community school

## **Students on site after hours**

Students should not be on the school site after hours unless:

- They are invited by school staff to be there
- They are attending an organised school or community event
- They are using, through paid admission, any of the school's facilities



## **Car Parking**

Please can we remind all parents that to ensure the safety and safe exit of our students, parents should wait outside of the school gate to collect their child at the end of the day as cars are not allowed on site between 2.45pm and 3.15pm

To help alleviate any congestion we have a Partnership agreement with B&Q whereby visitors may utilise their parking facilities. Additionally, we have an agreement with Eastleigh Borough Council and Hedge End Town Council for further parking at the Turnpike Way recreation ground. Both locations are only a few minutes walk away.

## **Smoking**

The school site is a no smoking site. Smoking therefore should not take place anywhere around the site including the school field. This includes vaping and e-cigarettes.

## **Community Police Officers**

Please do not be alarmed if you see these Police Officers around the school site or outside of school, as part of the government initiative these Police Officers will be working in the community and in partnership with all schools to develop relationships with young people within the community. We regularly meet with our local policing team to ensure that we are doing all we can to support students with regard to being safe and being good role models in the community.

## **Students within the community**

We expect students to uphold our school values both to and from school, when in school uniform and when they are in the community. The school works closely with organisations and retailers locally and regularly communicates so that we can support each other when students get it wrong and celebrate when they get it right.

**QUALITY** 

**“Quality means doing it right when no one is looking.”  
— Henry Ford**

## The Wildern Way

Wildern School is built on the three key pillars of the Multi Academy Trust words; CARE, OPPORTUNITY and QUALITY and believes that *'Every Student Matters, Every Moment Counts'*. We are a comprehensive school in the heart of our community and are very proud of the relationships we have with our students, parents and local residents. We believe passionately in quality education for all and the significant part we play in ensuring this both within our own community and beyond.

The three stated academy aims for Wildern School are:

- To enhance the opportunities and successes enjoyed by all present and future students and staff.
- To develop further the school's track record of contributing to school improvement, innovation and transformation both within the school, locally within our immediate family of schools and for the wider system as a whole.
- To develop further the schools wider community role and our contribution to opportunities for our stakeholders in our immediate community, particularly in the arts and sport.

We take pride in our excellent record of academic success and the opportunities that we offer our students both through the curriculum and our extensive extra-curricular activities. We continue to perform well above the national average.

We strive to ensure that all students achieve their full potential through a clear focus on learning and achievement in a supportive environment. We are proud of the fact that we know every student as an individual and challenge and stimulate them regardless of ability so that they can all achieve within a happy and secure environment.

We especially value our collaboration with parents, ensuring that this partnership is to the benefit of your child.

Wildern is a successful school that is proud of its students' achievements whether they are academic, sporting, artistic or dramatic. We provide a curriculum that is both broad and balanced, and one that has received national recognition for its quality.



# Our Curriculum

## Curriculum Vision

At Wildern our aim is to offer all students access to a broad, balanced, relevant and challenging curriculum, which prepares them for the opportunities, responsibilities and experiences of adult life.

The curriculum enables our students to:

- Develop their knowledge, skills and understanding
- Appreciate human achievement
- Gain understanding of social, economic and political issues
- Be aware of the spiritual and aesthetic dimensions of life
- Develop attitudes, values and beliefs that are reasoned and acceptable within society
- Develop independence of learning fostering skills and attributes for lifelong learning
- Be aware of their own health and safety and to appreciate the benefits and risks of the choices they make
- Prepare for life in Modern Britain. Our curriculum promotes the fundamental British values of democracy, the rule of law, individual liberty and mutual respect for and tolerance of those with different faiths and beliefs and those without faiths

We are committed to giving students opportunities to achieve and experience success; establish sound constructive relationships; to develop a sense of responsibility for their actions and to share a concern for their own environment and the world as a whole.

The curriculum is seen as a 5-year journey.

## The importance of Key Stage 3

Key Stage Three (KS3) is the bridge between the knowledge and skills students have developed at Key Stage Two, and the knowledge and skills we want our students to have to prepare them for Key Stage Four. In KS3, students study a wide variety of subjects, allowing them to explore and engage with a rich quality of education across all aspects of the curriculum.

Throughout Years 7 and 8, students follow a progressive curriculum, which is built around the principles of knowledge, skills and passion. The KS3 curriculum will prepare students for the next stage in their learning journey by making them the readers, writers and thinkers we want them to be. Regular opportunities are built in for students to activate prior knowledge, whilst adding complexity, to ensure students can see how each Key Stage builds on each other; helping students to make connections between, and use the knowledge and skills previously learnt and understand how they expand on it. Each curriculum area has thoughtful, sequenced learning journeys which not only build on prior knowledge, but allows students to apply it to different contexts.

**Every Child Matters:** Challenge and curiosity throughout Key Stage three ensures the curriculum is ambitious for all. Adaptive teaching strategies and timely interventions both in and out of the classroom ensure no one is left behind. The Tutor programme, together with subject curriculums, including MSS, provide opportunities for students to develop the skills needed to be resilient, life long learners. We adopt a holistic approach, building on opportunities to develop the whole child.

**Every Opportunity Counts:** Regular opportunities to test what students know and can do through formative and summative assessment methods. Self study, and timely, effective feedback provides every student the opportunity to grow as learners, developing metacognitive skills of self regulation, and the ability to become independent, resilient learners.



The breadth of subjects studied and topics within subjects, alongside our extensive offer of extra curricular activities, including trips, strengthens students' cultural references to ensure they are able to make real connections and understand the world around them.

### **Practice**

- Students follow a 2 year Key Stage Three
- Evidence informed practice underpins planning to aid student memory, for example interleaving, low stakes quizzing
- Sequenced curriculum maps in every subject area
- Regular self study set in each subject area
- High number of evidence informed formative assessment opportunities, such as low stakes quizzing, live feedback and verbal feedback
- Calendared exam slots for summative assessment
- Thinking hard strategies

### **Key Stage 4**

In KS4, students choose a selection of subjects to specialise in, having more time to study to a deeper level the subjects they enjoy and have a passion for. This includes the option to study new subjects which are linked to GCSE opportunities, that were not included discreetly at KS3.

The quality of education designed for KS4 study builds on KS3, extending, enriching and deepening understanding, knowledge and skills. KS4 courses will ensure that the Specifications for GCSE courses are delivered, with the opportunity to follow lines of enquiries as a response to student questions, enabling learning around the subject and to a greater depth.

## **The Pathways Process**

During Year 8, students make important steps within their educational journey by choosing what areas they are going to specialise in during their KS4 venture. This pathways process initially begins with the PLRs where students are invited to set targets for themselves to investigate further what areas of study they may be interested in. Students and parents will then be fully involved with an extensive pathways process to help inform, engage, excite and inspire our students to select a personalised suite of subjects that will be studied at a deeper level during KS4.

### Key Dates

Yr 8 Pathways Evening - 26 January 2023

Yr 8 Parents Evening - 2 February 2023

Pathways Assemblies - Week Commencing 20 February 2023

Pathways Taster Lessons - Fortnight Commencing 27 February 2023

Pathway Forms Submission - 20 March 2023

Confirmation of Pathway Choices - Mid June 2023

## Teaching and Learning

Teaching and Learning is what Wildern is all about; it is our primary job and is integral to the work that we do every day. Every member of staff is encouraged to be part of our Professional Learning Groups (PLG's) who research pedagogy, trial its usefulness and embed its practices to ensure that we stay at the forefront of educational thinking, innovation and enquiry.

We believe that students learn best when they:

Enjoy their learning

Are interested, motivated and engaged

Achieve success and gain recognition

Are given tasks which match their ability

Clearly understand the learning objectives, content and expectations for lessons

Are confident, feel secure and are aware of boundaries

Are challenged and stimulated

Are involved in their own learning and are encouraged to think about new ideas and ask questions

Are encouraged to extend their classroom learning during study time at home

Are encouraged to develop their analysis and thinking skills

Are involved in evaluating their own and others' progress (AfL)

Know their level of performance, understand the assessment criteria and can see themselves progressing, knowing how to improve

We know excellent teaching is achieved when:

- Students are challenged with work appropriate to their ability
- Lessons are well planned and resourced to engage all students
- Assessment for Learning is taking place including peer/self-assessment
- Teachers are seen as energetic and enthusiastic for their subject and have good subject knowledge
- Learning objectives are shared and discussed with the class at the start of the lesson
- The lesson consists of a variety of bite size activities using a range of learning styles
- Plenaries are well structured, involve the students and re-cap on the learning objectives of the lesson
- Students are supported to improve their work with formative comments
- ICT is used to enhance and enrich the quality of teaching
- The teaching style is varied and acknowledges variations in learning styles, maximising student engagement and enquiry
- Students are motivated to behave well within a consistent behaviour management framework
- Student progress is tracked, monitored and reviewed regularly
- Assessment is used to inform planning, teaching and progress
- Students are encouraged to think about their ideas and ask questions

We believe that our classrooms cultivate these ideals in order that students acquire the essential study skills, love of learning and resilience required for life after Wildern.

## Class Codes

There are 25 lessons each week. Each lesson lasts for 1 hour. In Year 8, students will study the following subjects:

<b>Subject</b>	<b>Code</b>	<b>Lessons</b>
Art	Ar	2
Drama	Dr	2
Dance	Da	1
English	En	7
Geography	Ge	3
History	Hi	3
Information Studies (ICT)	It	2
Maths	Ma	7
Modern Foreign Language (MFL) (Students study 1 MFL subject) French German or Spanish	Fr Gm SP	5
Education for Life	EL	1
Music	Mu	2
Physical Education	Pe	4
Religious Education	Re	2
Science	Sc	6
Technology including Design & Technology and Food and Nutrition	De Fd	3



The School ethos is 'no bottom set' and most subjects are taught in mixed ability classes. Some subjects have higher and foundation tiers at GCSE so have broadly set groups throughout Key Stage 3 (Maths and Science).

The class codes take the form of; Year, Population, Subject, Class. A Year 8 student in the X population in English class number 3 would have the class code 8xEn3. In Year 8 there are 3 populations W, X, Y.

## Self-study

Self-study at KS3 is set frequently with a weekly or fortnightly deadline. Tasks should take a student up to 30 minutes to complete per subject area. The emphasis should be on the quality of the response and not the amount completed.

Listed are some examples of potential self-study tasks at KS3:

- Google Quiz / Kahoot
- Vocabulary learning
- Extended reading with comprehension questions
- Quizlet
- Worksheet
- Practice papers (Self marking)

Self-study tasks will usually involve self-reflection or peer feedback to enable students to make improvements. This may be conducted in a variety of ways by the class teacher.

We believe that completing work outside lessons helps students in a number of ways:-

- It develops the Wildern Attributes and study habits.
- It teaches the importance of deadlines and consolidates and extends classroom learning.
- It encourages an enquiring mind.
- It affords the opportunity for enrichment.
- It ensures opportunities to practice and consolidate new skills.
- It enables students to think critically and creatively.
- The impact of self-study on learning is consistently positive (leading to on average five months' additional progress).

If a project is set over a period of weeks then the subject teachers should provide a clear outline of what is expected for each task and a way of checking in stages that the work is being completed. (E.g. flyer outlining criteria for each task and ticked off when completed)

## How can I support my child's learning?

Discuss with your child the best time for them to study each day. There are many valuable learning experiences outside the school day that should be planned for and included when organising study time.

Help your child to devise a timetable that suits their individual needs and check that their Self-study is in the schoolbag on the morning the self-study is due.

Talk to students about their self-study. You could ask:

*“Have you done this self-study?” or “What is the most urgent piece of self-study you have to do and when will you do it?”*

- Encourage your child to work in a quiet, comfortable place at a regular time each day.
- Encourage your child to see self-study as an extension of the lesson and not leave doing it until the night before it is due in.
- Check that your child has recorded the work in their planner.
- Discuss the work with your child; do they understand the task? Can they extend and improve their answers?
- Encourage your son/daughter to work to the time allocation set for each subject.
- Refer your son/daughter to Google Classroom, school library or your local library.
- Remember to write a note in the planner if your child has a genuine reason for not completing the Self-study.

- Use google guardians to check and ensure your child is completing Self-study.
- Contact the tutor if you have any concerns about Self-study.
- Your child may receive additional work from the Learning Support department. Try to agree a regular time to help your child with these tasks.
- During exam sessions, ensure that your child has created a revision timetable that can help to plan effective revision.

Example of a self-organised Self-study timetable:

Day	Subject/activity	Subject/activity	Subject/activity
Monday	Stables 3.15	Maths	Art
Tuesday	English 3.30	Music lesson 5.30	Dance
Wednesday	Stables 3.15	Science	Drama
Thursday	Geography	Music	Youth Club 7.00
Friday	RE	MFL	ICT
Saturday	Stables 10.00	Football 2.00	
Sunday		Technology	History

Please don't be afraid to ask the school for help – we have a range of qualified staff to offer that extra emotional support, practical help or counselling. In the first instance, you should approach your child's tutor or a member of the Student Services Team, they will be more than happy to help you and your child to put things right.

If you would like specific subject support, you should contact your **child's subject teacher in the first instance.**

Curriculum Teams			
English	Mrs B Rooney	Design Technology	Mr J Smith
Maths	Mr W Sleeman	Creative Arts	Mrs H Duncombe
Science	Mrs D Penney	PE	Mr B Wainwright
Languages	Mr T Russell	Communication Studies	Mrs N Anderson
Humanities	Mrs E Dixon		

Information about the curriculum studied throughout Year 8 is on the following pages. There are also some suggestions for ways to enrich your child's learning at home for each subject.

# The Curriculum – Subjects

Department: **ART**

Periods per fortnight **2**  
 Class Organisation: **Mixed Ability**

## **Course Overview:**

Students will embed a number of key skills, knowledge and understanding through 2 main projects and a series of GCSE style taster lessons. Projects include; A Still Life project, the Landscape Assessment project and GCSE art taster lessons; including experimentation with printmaking, drawing and using new technologies.

## **How students will be assessed**

Students will be assessed with Wildern Steps throughout the year, through a final extended Assessment Landscape Project and through a 1 hour written exam.

## **Self-study**

Each project will have the following tasks, available as printouts and via Google Classroom:

- |                                |   |
|--------------------------------|---|
| Task 1: Artist Research Poster | Task 2: Drawing / Photography from real life        |
| Task 3: Google Classroom Quiz  | Task 4: Developing techniques / exploring materials |

## **Parental support**

- Monitor and support your child with completing the self-study tasks,
- Ensure your child has correct and required art equipment, including a glue stick, art shirt and basic art pack

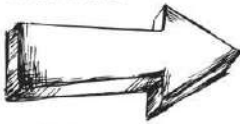
## **Enrichment Ideas**

<p style="text-align: center;"><b><u>Suggested reading</u></b></p> <ul style="list-style-type: none"> <li>● Da Vinci Code</li> <li>● Wildness and Wonder by Susan Goldman Rubin</li> <li>● Georgia Rises by Kathryn Lasky</li> </ul>	<p style="text-align: center;"><b><u>Films &amp; documentaries</u></b></p> <ul style="list-style-type: none"> <li>● Sky Arts</li> <li>● Sky Landscape / Portrait artists of the year</li> <li>● Nate: Artrageous</li> </ul>
<p style="text-align: center;"><b><u>Cultural experiences</u></b></p> <ul style="list-style-type: none"> <li>● Art Galleries - there are plenty of local ones</li> <li>● Talk to your child about art and about their artwork create time for a discussion or to share thoughts</li> <li>● Have a balance of screen time</li> </ul>	<p style="text-align: center;"><b><u>Things to see and do locally</u></b></p> <ul style="list-style-type: none"> <li>● Wildern D@rt centre</li> <li>● Southampton City Art Gallery</li> <li>● John Hansard Gallery / city eye Hobby Craft workshops / WSA shop and gallery</li> <li>● Today @ Apple</li> </ul>
<p style="text-align: center;"><b><u>Top 5 Websites</u></b></p> <ul style="list-style-type: none"> <li>● <a href="https://www.tate.org.uk/">https://www.tate.org.uk/</a></li> <li>● <a href="https://www.southamptoncityartgallery.com/">https://www.southamptoncityartgallery.com/</a></li> <li>● <a href="https://www.canva.com/">https://www.canva.com/</a></li> <li>● <a href="https://sketch.io/sketchpad/">https://sketch.io/sketchpad/</a></li> <li>● <a href="http://www.artlex.com/">http://www.artlex.com/</a></li> </ul>	<p style="text-align: center;"><b><u>Things we do</u></b></p> <ul style="list-style-type: none"> <li>● Art Club / Join the Art Enrichment Google Classroom</li> <li>● Art competitions / Photography Competitions</li> </ul>



# ART

department



## Art & Photography Learning Journey

A04



**Department:** COMPUTING

**Periods per fortnight** 2  
**Class Organisation:** **Mixed Ability**

**Course Overview:**

Students will complete 5 units: Unit 7: Digital Products  
Unit 8: Product Marketing  
Unit 9: Computer Science and Programming  
Unit 10: Applied Digital Skills  
Unit 11: Choose Your Own Adventure

**How students will be assessed**

Mid unit and end of unit formal teacher assessment

**Self-study**

Self-study Projects via Google Classroom  
Autumn term: Unit 7 & 8  
Spring / Summer: Unit 9  
Summer: Unit 10 & 11

**Parental support**

- Checking self-study regularly
- Encourage use of computing at home.

**Enrichment Ideas**

<p style="text-align: center;"><b><u>Suggested reading</u></b></p> <ul style="list-style-type: none"><li>● Coding for Beginners: Using Python by Louie Stowell</li><li>● Coding Games in Python (Computer Coding for Kids) by DK</li></ul>	<p style="text-align: center;"><b><u>Films &amp; documentaries</u></b></p> <ul style="list-style-type: none"><li>● <a href="#">BBC Teach - computer science playlist - Youtube</a></li><li>● Ask the Storybots - How do computers work?</li></ul>
<p style="text-align: center;"><b><u>Cultural experiences</u></b></p> <ul style="list-style-type: none"><li>● The National Museum of Computing <a href="https://www.tnmoc.org/">https://www.tnmoc.org/</a></li><li>● Learn a new programming language</li></ul>	<p style="text-align: center;"><b><u>Things to see and do locally</u></b></p> <ul style="list-style-type: none"><li>● Game Over: Video Game cafe Portsmouth</li><li>● IBM Hursley Museum <a href="https://slx-online.biz/hursley/the_museum.asp">https://slx-online.biz/hursley/the_museum.asp</a></li></ul>
<p style="text-align: center;"><b><u>Top 5 Websites</u></b></p> <ul style="list-style-type: none"><li>● BBC Bitesize KS3 ICT</li><li>● <a href="https://hourofcode.com/uk/learn">https://hourofcode.com/uk/learn</a></li><li>● <a href="https://lightbot.com/flash.html">https://lightbot.com/flash.html</a></li><li>● <a href="https://scratch.mit.edu">https://scratch.mit.edu</a></li><li>● <a href="https://repl.it/">https://repl.it/</a></li></ul>	<p style="text-align: center;"><b><u>Things we do</u></b></p> <ul style="list-style-type: none"><li>● E Safety focus group</li><li>● IBM for Y8 Girls</li><li>● IBM trip</li></ul>



"The similarities between humans and computers are more numerous than the differences." P.A Scott

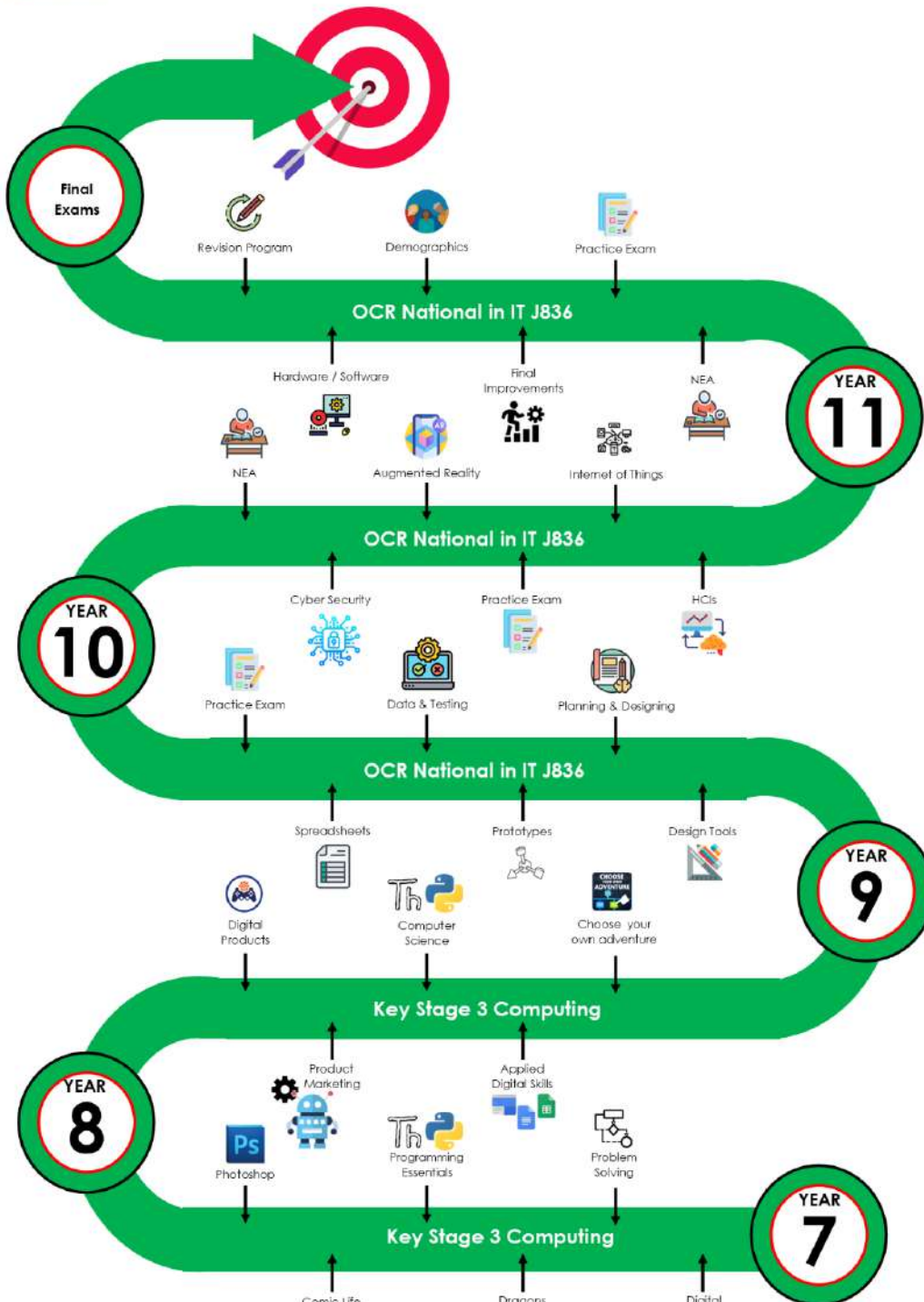


# WILDERN ICT LEARNING JOURNEY



"Education is the passport to the future, for tomorrow belongs to those who prepare for it today." Malcolm X

"A teacher can open the door, but you must enter it yourself." Chinese Proverb



"Computers themselves, and software yet to be developed, will revolutionize the way we learn." Steve Jobs

**Department:** DANCE

**Periods per fortnight** 1  
**Class Organisation:** **Mixed Ability**

**Course Overview:**

Autumn Term: Capoeira and Poetry through Dance

Spring Term: The Car Man – Matthew Bourne

Summer Term: GCSE Professional Dance Works: Emancipation of Expressionism

**How students will be assessed**

Students are assessed through the Wildern Steps on their practical work in three areas, composition, performance and analysis, both continually and at the end of each unit.

Year 8 exam – students will be assessed on their dance vocabulary and key terms in a written paper. This will focus on choreographic skills, performance skills, safe practice and analysis.

**Self-study**

Spring Term - Evaluative writing analysing and reflecting on 'The Carman' by Matthew Bourne.

**Parental support**

- Encourage their child to watch live and recorded dance in a variety of styles.
- Ensure their child wears the appropriate kit and has equipment for all lessons.
- Dance kit – green shorts and white Wildern polo shirt.

**Enrichment Ideas**

<p style="text-align: center;"><b><u>Suggested reading</u></b></p> <ul style="list-style-type: none"><li>● Ballet Stars</li><li>● Rambert Dance</li></ul>	<p style="text-align: center;"><b><u>Films &amp; documentaries</u></b></p> <ul style="list-style-type: none"><li>● Matthew Bourne dance pieces</li><li>● Emancipation of Expressionism - Anthology</li></ul>
<p style="text-align: center;"><b><u>Cultural experiences</u></b></p> <ul style="list-style-type: none"><li>● Theatre visits. The Berry, Mayflower, Nuffield, London, Sadlers Wells</li><li>● Performing as a part of the dance extra curricular programme in the Berry Theatre</li></ul>	<p style="text-align: center;"><b><u>Things to see and do locally</u></b></p> <ul style="list-style-type: none"><li>● Dance clubs at school</li><li>● D@rt Centre dancer activities</li><li>● The Point Theatre</li><li>● The Berry Theatre</li><li>● The Mayflower Theatre</li></ul>
<p style="text-align: center;"><b><u>Top Websites</u></b></p> <ul style="list-style-type: none"><li>● Capoeira - <a href="https://youtu.be/Z8xxgFpK-NM">https://youtu.be/Z8xxgFpK-NM</a></li><li>● The Car Man - <a href="https://new-adventures.net/the-car-man#overview">https://new-adventures.net/the-car-man#overview</a></li><li>● Brothers of dance: Contemporary - <a href="https://youtu.be/KEAkyBd6a-Y">https://youtu.be/KEAkyBd6a-Y</a></li><li>● Emancipation of Expressionism Video - <a href="https://www.youtube.com/watch?v=nUQI8kUjaiE">https://www.youtube.com/watch?v=nUQI8kUjaiE</a></li></ul>	<p style="text-align: center;"><b><u>Things we do</u></b></p> <ul style="list-style-type: none"><li>● Year 8 dance club</li><li>● The Unheard Boys Dance Company</li><li>● Junior bare roots (by invite only)</li><li>● Showcases x3 in the Berry Theatre</li><li>● Dance Live!</li></ul>

# YEAR 7-11 DANCE



**Course Overview:**

Students take part in the following projects: Pull along Wooden Toy, USB Lamp, Emoji Toy and Food Kitchen Safety, Diet and Health. Students learn valuable skills and techniques which could be used in Year 9.

**How students will be assessed**

Students are assessed throughout the projects and given a Wildern Step for practical and design work.

**Self-study**

Self-study is given once every term. Self-study tasks can be found on Google Classroom and include childhood obesity research, pull along toy research and design movement research.

D&T – Textiles Quiz

D&T – Design movements research and quiz

D&T – Pull along toy research and quiz

Summer Term - Revising for Year 8 exam

Food - International cuisine research

**Parental support**

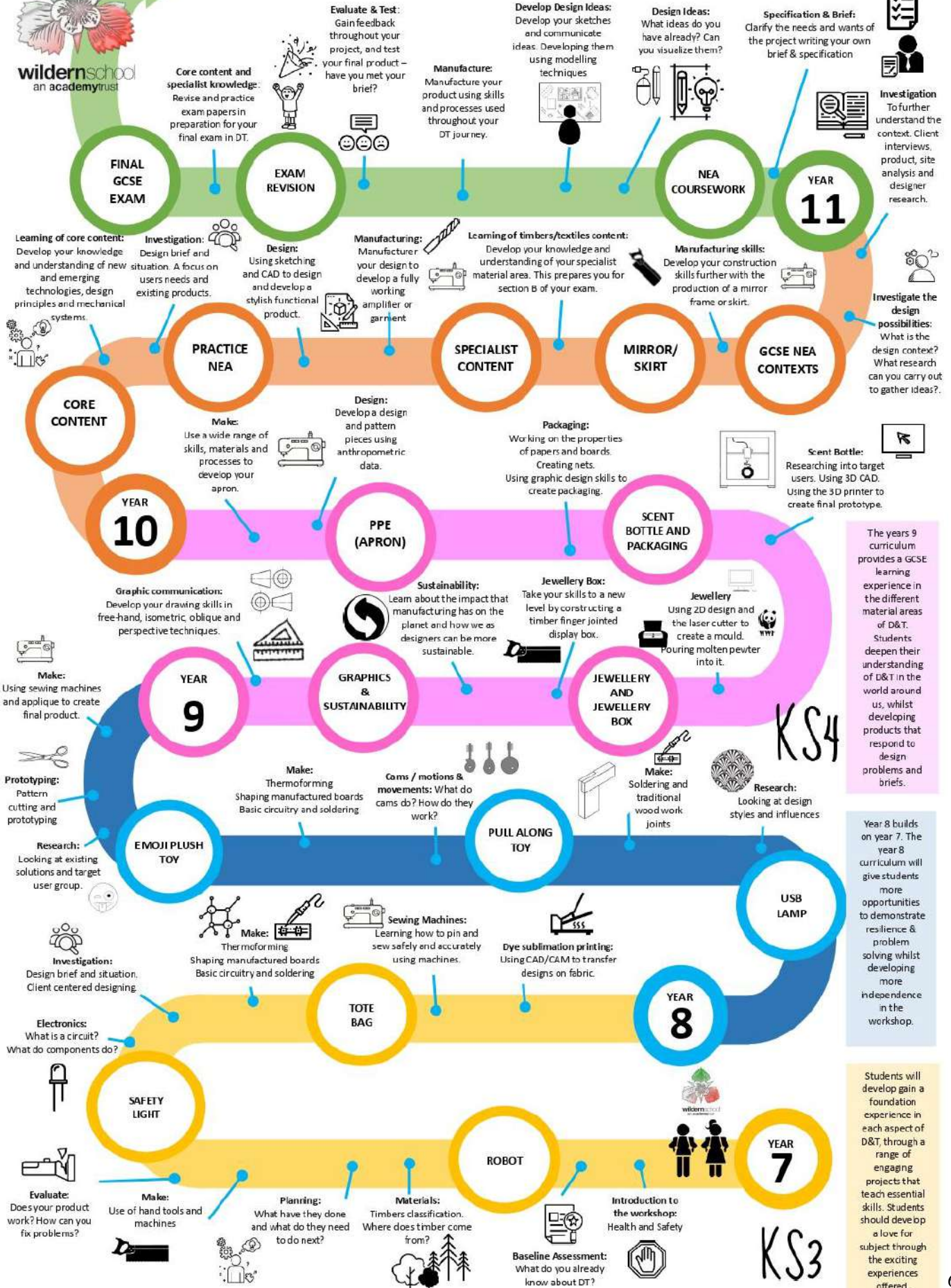
- Provide ingredients where necessary for practical food lessons.
- Check planners for recipes and money collection.
- Ensure your child has a pencil and pen for every lesson. Coloured pencils may be an advantage.
- Assist with research and check self-study is completed on time.

**Enrichment Ideas**

<b><u>Suggested reading</u></b>	<b><u>Films &amp; documentaries</u></b>
<ul style="list-style-type: none"> <li>● Design: The whole story</li> <li>● Design: The definitive history</li> <li>● Fashion: The definitive visual history</li> <li>● Jamie Oliver 5 ingredients</li> <li>● Biographies of designers and chefs</li> </ul>	<ul style="list-style-type: none"> <li>● Great british bake off</li> <li>● Masterchef</li> <li>● Inside the factory</li> <li>● Food unwrapped</li> <li>● BBC How to make</li> <li>● BBC The great british sewing bee</li> </ul>
<b><u>Cultural experiences</u></b>	<b><u>Things to see and do locally</u></b>
<ul style="list-style-type: none"> <li>● Big band fair</li> <li>● Visiting local food markets and food festivals</li> <li>● Goodwood festival of speed</li> <li>● Farnborough air show</li> <li>● New forest county show</li> </ul>	<ul style="list-style-type: none"> <li>● INTECH</li> <li>● 1851 trust</li> <li>● Solent Sky</li> <li>● Beaulieu</li> <li>● Hovercraft museum</li> </ul>
<b><u>Top 3 Websites</u></b>	<b><u>Things we do</u></b>
<ul style="list-style-type: none"> <li>● <a href="https://www.bbcgoodfood.com/">https://www.bbcgoodfood.com/</a></li> <li>● <a href="http://www.technologystudent.com/">http://www.technologystudent.com/</a></li> <li>● <a href="https://www.bbc.co.uk/programmes/b07mddqk">https://www.bbc.co.uk/programmes/b07mddqk</a></li> </ul>	<ul style="list-style-type: none"> <li>● Run after school clubs. These include STEM club, Design club and Textiles club</li> <li>● Run an after school cooking competition</li> <li>● Share our love of the subject and what we do with our skills outside of teaching</li> </ul>



# DESIGN & TECHNOLOGY LEARNING JOURNEY



The years 9 curriculum provides a GCSE learning experience in the different material areas of D&T. Students deepen their understanding of D&T in the world around us, whilst developing products that respond to design problems and briefs.

Year 8 builds on year 7. The year 8 curriculum will give students more opportunities to demonstrate resilience & problem solving whilst developing more independence in the workshop.

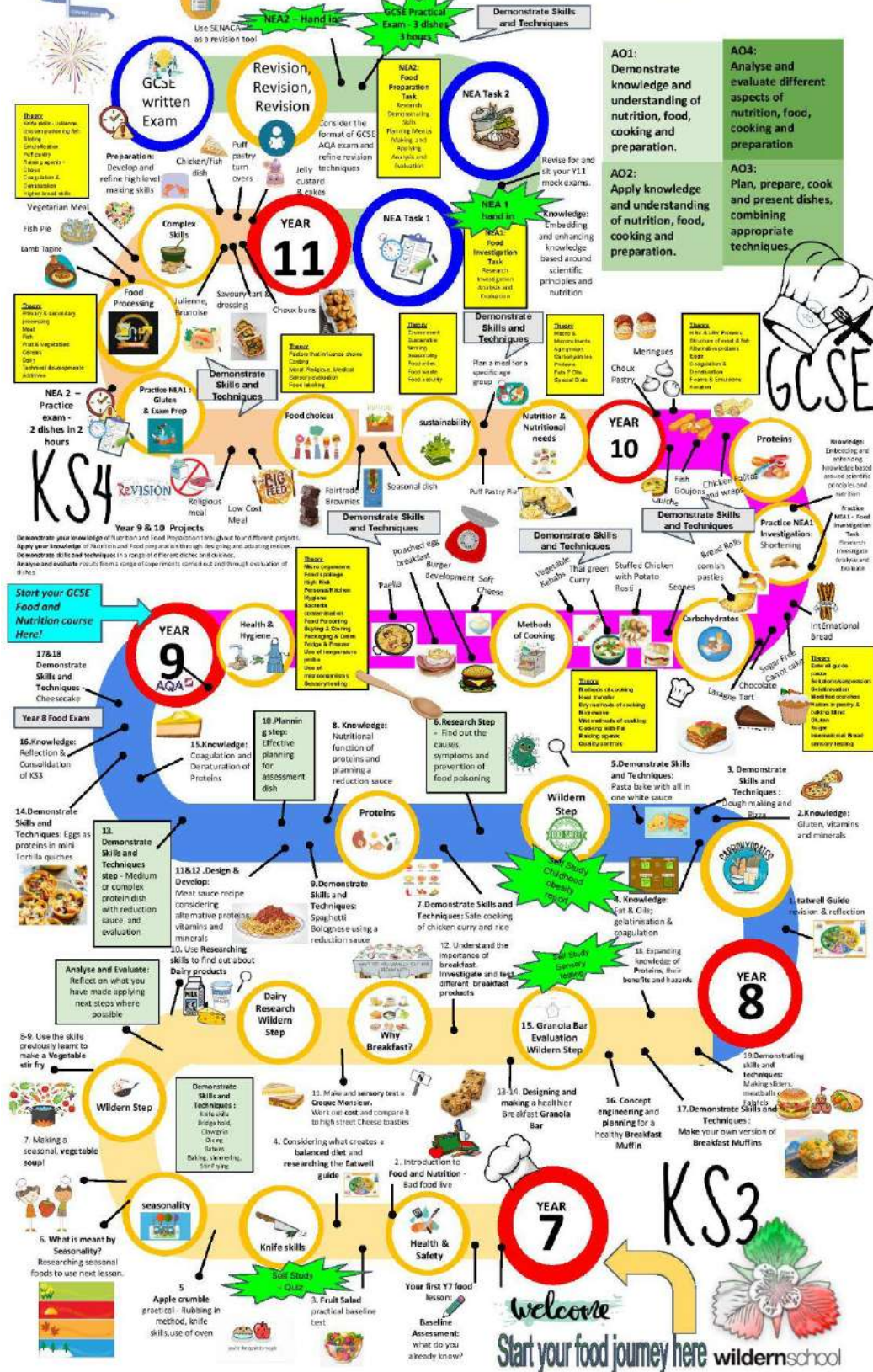
Students will develop gain a foundation experience in each aspect of D&T, through a range of engaging projects that teach essential skills. Students should develop a love for subject through the exciting experiences offered.



# Wildern School Learning Journey



## Food and Nutrition



Department: **DRAMA**

Periods per fortnight **2**  
Class Organisation: **Mixed Ability**

**Course Overview:**

Students will practically explore many styles of theatre ranging from Devised Drama to Comedy. They will also look at adapting film scripts for the stage as well as creating whole class scenes. In yr 8 we also consider what impact our work can have on an audience and how we can fulfil our artistic intentions through dramatic form. The explorations will enhance students' understanding of explorative strategies and performance skills.

**How students will be assessed**

Students are assessed at the end of each half termly Scheme of Work. Although the assessment is practical, students can still make progress by showing their understanding of topics and performance through self study tasks and assessment reflections. Students are graded by The Wildern Drama Steps for their performances and practical work.

**Self-study**

Students need to complete a written task set by the teacher after every practical unit. Additional self-study tasks will be set at the discretion of class teachers. As part of self study students will be encouraged to arrange their own extra rehearsal times in the Auditoriums.

**Parental support**

- To ensure the correct equipment and footwear is brought to every session.
- Supporting with extra rehearsals/extra-curricular activities.
- Supporting with the learning of dialogue

**Enrichment Ideas**

<p style="text-align: center;"><b><u>Suggested reading</u></b></p> <ul style="list-style-type: none"><li>● The Hunger Game Trilogy- Suzanne Collins</li><li>● Teechers by John Godber</li><li>● I love you Mum - Mark Wheeller</li><li>● Hard To Swallow- Mark Wheeller</li></ul>	<p style="text-align: center;"><b><u>Films &amp; documentaries</u></b></p> <ul style="list-style-type: none"><li>● The Hunger Games- Gary Ross</li><li>● Clue - Jonathan Lynch</li></ul>
<p style="text-align: center;"><b><u>Cultural experiences</u></b></p> <ul style="list-style-type: none"><li>● Backstage Tours at The Mayflower</li><li>● Day trips to London to visit The West End</li><li>● RSC tours and play to enjoy in Stratford Upon Avon</li><li>● Involvement with Inhouse Productions</li><li>● Outside Theatre at Mottisfont (National Trust)</li></ul>	<p style="text-align: center;"><b><u>Things to see and do locally</u></b></p> <ul style="list-style-type: none"><li>● The MayFlower Southampton - Backstage Tours and Summer Schools</li><li>● New Theatre Royal, Portsmouth</li><li>● Winchester Hat Fair - Free Outdoor Arts Festival</li><li>● The Point and Berry Theatre Youth Theatre and workshops</li><li>● The D@rt have a Thursday night drama club</li></ul>
<p style="text-align: center;"><b><u>Top 5 Websites</u></b></p> <ul style="list-style-type: none"><li>● <a href="http://www.shakespearesglobe.com/discover/about-us/virtual-tour">www.shakespearesglobe.com/discover/about-us/virtual-tour</a></li><li>● <a href="http://www.royalcourt.com">www.royalcourt.com</a></li><li>● <a href="http://www.visitlondon.com/virtually-london">www.visitlondon.com/virtually-london</a></li><li>● <a href="http://www.rsc.org.uk">www.rsc.org.uk</a> (virtual tours)</li><li>● <a href="https://www.bbc.co.uk/iplayer/group/p08gh374">https://www.bbc.co.uk/iplayer/group/p08gh374</a></li></ul>	<p style="text-align: center;"><b><u>Things we do</u></b></p> <ul style="list-style-type: none"><li>● School Production</li><li>● Drama Club/ Drama Club Showcase</li><li>● Theatre Visits</li><li>● Watching GCSE Drama work as an exam audience</li><li>● Being part of hot seating exercises for LAMDA candidates</li></ul>

# YEAR 7-11 DRAMA



Written Exam

Concept Proformas

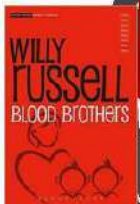
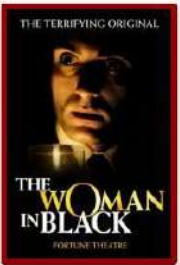


Presenting & Performing Texts

Blood Brothers exam play text



Live Theatre Review



Our Script Work



OCR Devising Drama



OCR play text



Theatre Practitioners

Murder Mansion



Theatre in Education \*



Theatre History



The Hunger Games

Godber's 'Teachers'

Script Work  
Blue  
Remembered  
Hills



Musical Theatre



What is Drama?



Live Theatre Review

Mime





**Department:** ENGLISH

**Periods per fortnight** 7

**Class Organisation:** **Mixed Ability**

**Course Overview:**

All students study a range of contemporary and seminal texts, including Shakespeare. Additionally, students develop their writing skills for different purposes and audiences, and hone their speaking and listening skills through presentations, paired and group discussions and debate.

**How students will be assessed**

Students are assessed using a range of formative and summative mediums, including quizzing, creative writing tasks, comprehension activities and more formalised examinations, such as reading and spelling tests.

**Self-study**

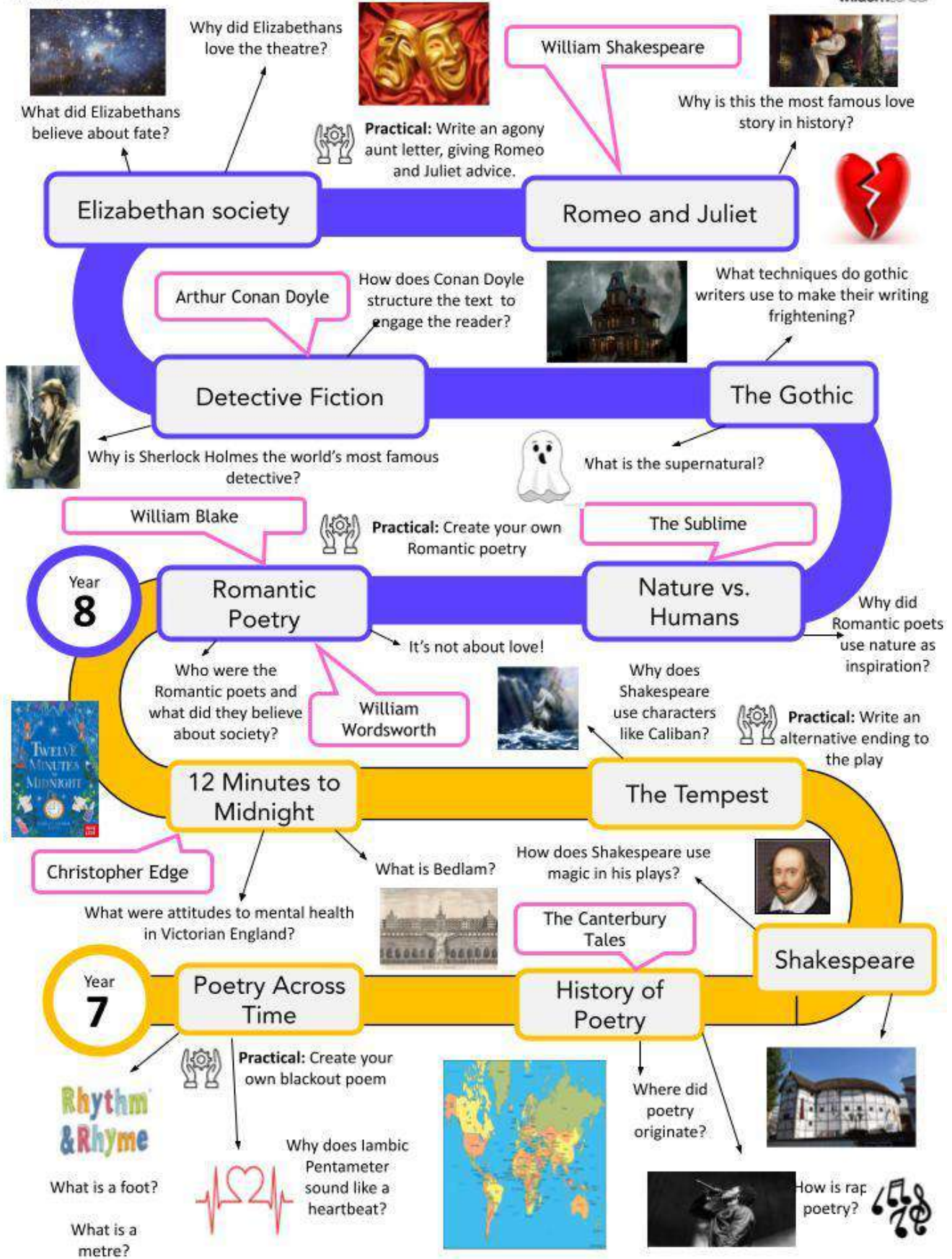
Students receive a self-study booklet termly which contains all of their home study tasks.

**Parental support**

- Check self-study is completed.
- Talk to students about their reading and encourage them to complete private reading at home.
- Help students to access the enrichment ideas, where possible

**Enrichment Ideas**

<p style="text-align: center;"><b><u>Suggested reading</u></b></p> <ul style="list-style-type: none"><li>● 'One of us is Lying' series- Karen McMannus</li><li>● 'Woman in Black'- Susan Hill</li><li>● 'Uglies' series- Scott Westerfeld</li><li>● 'Daz 4 Zoe' Robert Swindles</li><li>● 'Rani and Sukh'- Bali Rai</li><li>● '1984'- George Orwell</li></ul>	<p style="text-align: center;"><b><u>Films &amp; documentaries</u></b></p> <ul style="list-style-type: none"><li>● Sherlock Holmes BBC collection (<a href="https://www.bbc.co.uk/iplayer/episodes/b018ttws/sherlock">https://www.bbc.co.uk/iplayer/episodes/b018ttws/sherlock</a>)</li><li>● The Worst Jobs In History - Elizabethan era.</li><li>● The Woman in Black - <a href="https://www.thewomaninblack.com/">https://www.thewomaninblack.com/</a></li></ul>
<p style="text-align: center;"><b><u>Cultural experiences</u></b></p> <ul style="list-style-type: none"><li>● Sherlock Holmes Experience- Madame Tussauds.<a href="https://www.madametussauds.com/london/en/whats-inside/the-sherlock-holmes-experience">https://www.madametussauds.com/london/en/whats-inside/the-sherlock-holmes-experience</a>)</li><li>● City of London Police Museum.</li><li>● Visit a wild natural location like The Lake District or The Peak District</li></ul>	<p style="text-align: center;"><b><u>Things to see and do locally</u></b></p> <ul style="list-style-type: none"><li>● Portsmouth City Museum- they often have Arthur Conan Doyle exhibits as he was born in Portsmouth</li><li>● Visit Milestones - the living Victorian village.</li><li>● Visit a moorland (The New Forest or Dartmoor) to experience the setting for Romantic poetry/ experience the power of nature.</li></ul>
<p style="text-align: center;"><b><u>Top 3 websites</u></b></p> <ul style="list-style-type: none"><li>● BBC Bitesize: KS3 Romeo and Juliet- <a href="https://www.bbc.co.uk/bitesize/topics/zfdj6sg">https://www.bbc.co.uk/bitesize/topics/zfdj6sg</a></li><li>● Romantic Poet: Wordsworth- <a href="https://wordsworth.org.uk/wordsworth/daffodils-and-other-poems/">https://wordsworth.org.uk/wordsworth/daffodils-and-other-poems/</a></li><li>● Hound of the Baskervilles: Revision Resource- <a href="https://www.sparknotes.com/lit/hound/">https://www.sparknotes.com/lit/hound/</a></li></ul>	<p style="text-align: center;"><b><u>Things we do</u></b></p> <ul style="list-style-type: none"><li>● Theatre in schools drama workshops.</li><li>● Share documentary clips to engage students and develop their understanding of the contextual timeframe.</li><li>● Encourage additional wider reading of detective, tragedy and mystery novels.</li><li>● Trip to the Globe Theatre to see Romeo and Juliett.</li></ul>



**Department:** GEOGRAPHY

**Periods per fortnight** 3

**Class Organisation:** **Mixed Ability**

**Course Overview:**

Students begin the year by looking at the continent of Asia, focusing particularly on China and their population growth, Australasia and Antarctica. In the Spring term, we study Africa to find out about differences in development, life in poverty and aid. Finally, students study how the complex interactions between humans and the environment can cause conflict in the fragile environments of Australasia and Antarctica.

**How students will be assessed**

Managing China's population  
Getting out of poverty  
The Coral Reef Assessment

**Self-study**

Self-study via Google Classroom, project based over a 3 week period. Examples include; Chinese New Year, Aid to Africa, The Biomes Project and entry to the GA competition.

**Parental support**

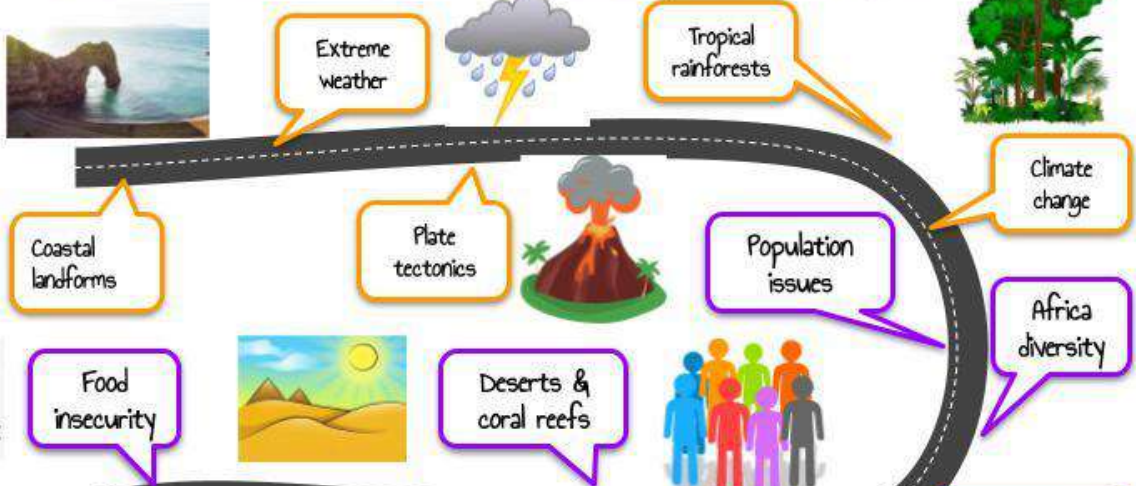
- In accessing subject specific resources like atlases and online sites like [www.worldatlas.com](http://www.worldatlas.com)
- Through taking part in student questionnaires and surveys.

**Enrichment Ideas**

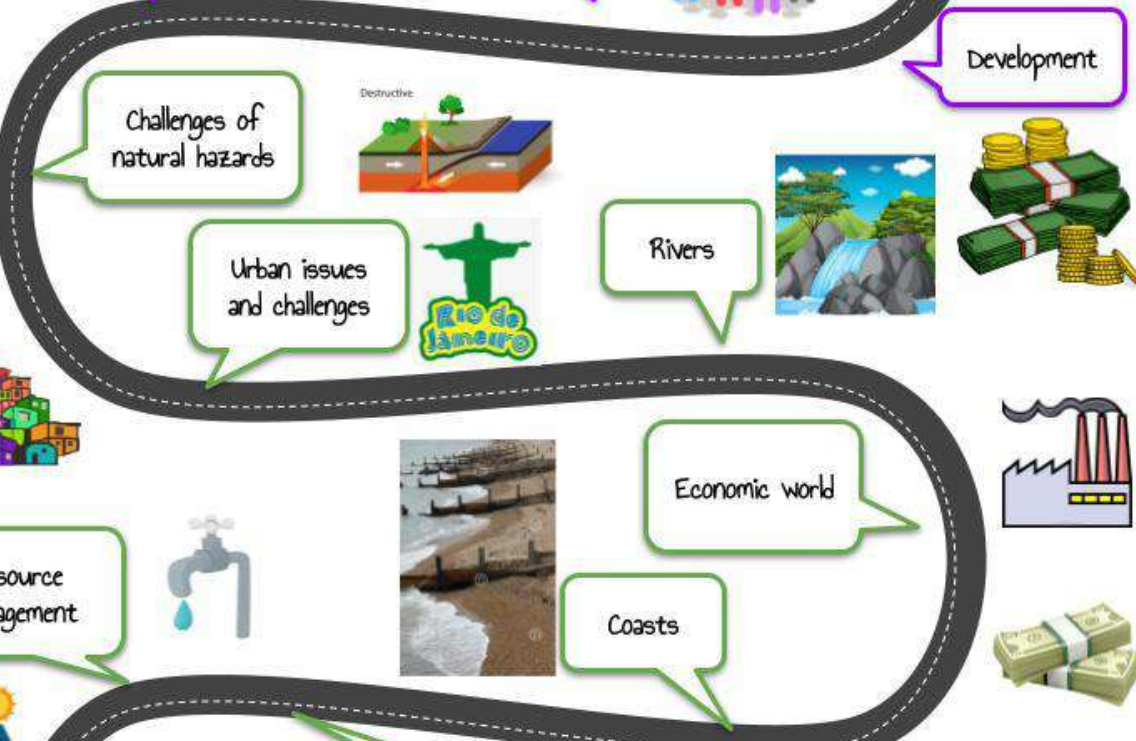
<p style="text-align: center;"><b><u>Suggested reading</u></b></p> <ul style="list-style-type: none"><li>● Horrible Geography Series</li><li>● Lonely Planet, A journey through every country</li><li>● Lonely Planet: The Big Earth Book</li><li>● DK: Natural Wonders of the World</li><li>● DK: What's where in the world?</li></ul>	<p style="text-align: center;"><b><u>Films &amp; documentaries</u></b></p> <ul style="list-style-type: none"><li>● Seven Worlds, One Planet (David Attenborough)</li><li>● Documentaries by Simon Reeve</li><li>● The Impossible</li><li>● Frozen Planet On Thin Ice</li></ul>
<p style="text-align: center;"><b><u>Cultural experiences</u></b></p> <ul style="list-style-type: none"><li>● National Trust 50 things to do before you're 11 and ¾</li><li>● Have access to a world map at home e.g. poster, atlas, scratch map, blow-up globe</li><li>● Make a homemade weather station &amp; keep a diary of the weather</li></ul>	<p style="text-align: center;"><b><u>Things to see and do locally</u></b></p> <ul style="list-style-type: none"><li>● Marwell Zoo - Rainforest Biome</li><li>● Science Museum, London</li><li>● London Eye</li><li>● National Parks e.g. New Forest</li><li>● Hengistbury Head &amp; Mudeford Spit</li></ul>
<p style="text-align: center;"><b><u>Top 5 Websites</u></b></p> <ul style="list-style-type: none"><li>● BBC Bitesize <a href="https://www.bbc.co.uk/bitesize">https://www.bbc.co.uk/bitesize</a></li><li>● BBC news <a href="https://www.bbc.co.uk/news">https://www.bbc.co.uk/news</a></li><li>● Geoguessr <a href="https://www.geoguessr.com/">https://www.geoguessr.com/</a></li><li>● World population clock <a href="https://www.worldometers.info/world-population/">https://www.worldometers.info/world-population/</a></li><li>● Google Earth <a href="https://earth.google.com/web/">https://earth.google.com/web/</a></li></ul>	<p style="text-align: center;"><b><u>Things we do</u></b></p> <ul style="list-style-type: none"><li>● Book Covering competition</li><li>● Mysteries</li><li>● China Fun and Festival</li><li>● Trip Advisor Project</li><li>● Aid to Africa</li><li>● Antarctica Presentations</li><li>● 3D Maps of China</li></ul>

# GEOGRAPHY CURRICULUM ROADMAP

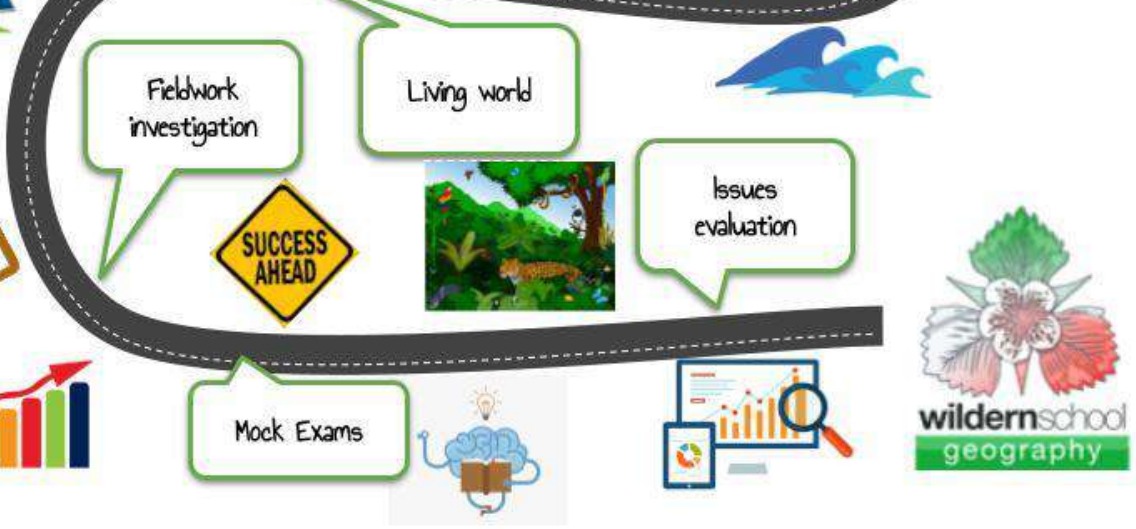
KS3



KS4



KS5



Department: **HISTORY**

Periods per fortnight **3**  
Class Organisation: **Mixed Ability**

**Course Overview:**

Students will study the turbulent 20<sup>th</sup> Century and explore the challenges facing the world today with a focus on the Titanic, women's suffrage, WW1, WW2, Civil rights, the Holocaust and the Atomic bomb.

**How students will be assessed**

Written assessments using Wildern Steps. Group and individual self-study.

**Self-study**

*Self study is set via google classroom. There are a mixture of projects, quizzes and worksheets based around 'meanwhile elsewhere' tasks.*

**Autumn** – Influential women in history: Who deserves a statue in Parliament Square?

**Spring** - Key events of WW2 audio / visual presentation – Student to choose an event of WW2 and work in a small group to explain the significance and importance of a key event of WW2?

**Summer** - Remembering the 20th century project: A visual presentation of the 20th century. Students will work individually on this project.

**Parental support**

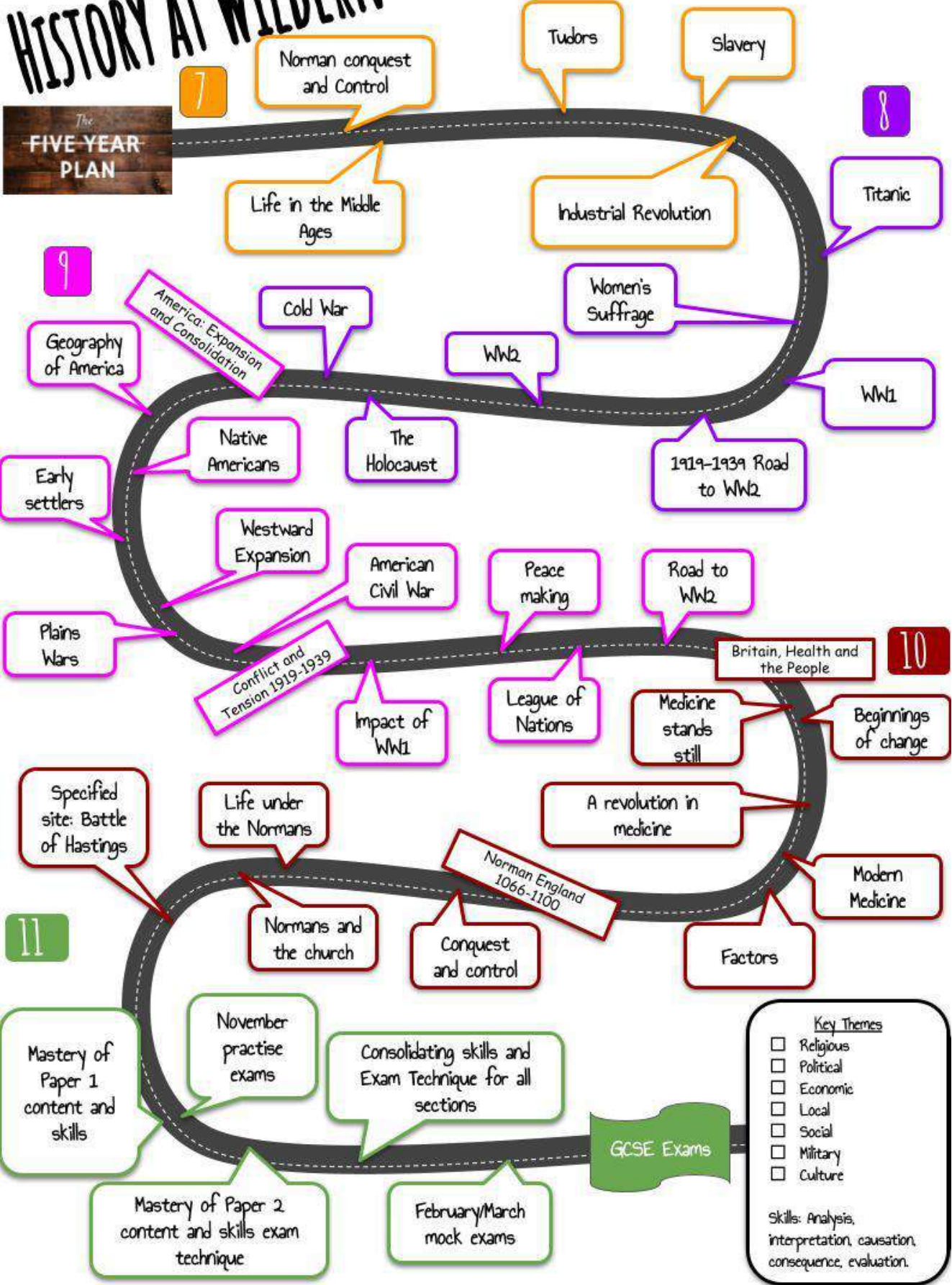
- Use of Library for research.
- Support with planning and meeting deadlines.
- Use of google classroom for extension and support information.

**Enrichment Ideas**

<p style="text-align: center;"><b><u>Suggested reading</u></b></p> <ul style="list-style-type: none"><li>● When Hitler Stole Pink Rabbit - Judith Kerr (WW2)</li><li>● Private Peaceful - Michael Morpurgo (Ww1)</li><li>● The Book Thief - Markus Zusak (WW2)</li><li>● Wave Me Goodbye - Jacqueline Wilson (Ww2)</li></ul>	<p style="text-align: center;"><b><u>Films &amp; documentaries (please check rating of films)</u></b></p> <ul style="list-style-type: none"><li>● Dunkirk</li><li>● Pearl Harbour</li><li>● Midway</li><li>● Hidden Figures</li></ul>
<p style="text-align: center;"><b><u>Cultural experiences</u></b></p> <ul style="list-style-type: none"><li>● Battle Abbey</li><li>● Imperial War museum</li><li>● Tower of London/ London Dungeons</li><li>● National History museum</li><li>● Mayflower theatre (War horse)</li></ul>	<p style="text-align: center;"><b><u>Things to see and do locally</u></b></p> <ul style="list-style-type: none"><li>● D Day Museum Portchester</li><li>● Fort Nelson</li><li>● Southampton Titanic Museum (Seacity museum)</li><li>● Chapel, grounds and cemetery at Royal Victoria Country Park</li></ul>
<p style="text-align: center;"><b><u>Top 5 Websites</u></b></p> <ul style="list-style-type: none"><li>● BBC bitesize <a href="http://www.bbc.co.uk/bitesize/subjects/zk26n39">www.bbc.co.uk/bitesize/subjects/zk26n39</a></li><li>● Titanic twitter (real time): <a href="https://twitter.com/titanic_live?lang=en">https://twitter.com/titanic_live?lang=en</a></li><li>● BBC teach <a href="http://www.bbc.co.uk/teach/ks3-history/zhbdpg8">www.bbc.co.uk/teach/ks3-history/zhbdpg8</a></li><li>● Youtube clips '<a href="#">horrible histories channel</a>', 'woeful second world war'</li><li>● '<a href="#">HISTORY</a>' youtube channel</li></ul>	<p style="text-align: center;"><b><u>Things we do</u></b></p> <ul style="list-style-type: none"><li>● Imperial War museum</li><li>● Movies: Titanic, Suffragette, War Horse</li><li>● Virtual museum tours</li><li>● Archaeology club</li></ul>

# HISTORY AT WILDERN

The FIVE YEAR PLAN



**Key Themes**

- Religious
- Political
- Economic
- Local
- Social
- Military
- Culture

Skills: Analysis, interpretation, causation, consequence, evaluation.

Department: **MATHEMATICS**

Periods per fortnight **7**  
Class Organisation: **Broadly Banded**

**Course Overview:**

Year 8 students follow the KS3 National Curriculum. Investigative skills are developed and accurate use of equipment is practised. Students are taught effective use of their own scientific calculators. Topics covered include:

**Autumn:** Transformations, algebraic functions, linear graphs, constructions, loci, calculator skills, plans and elevations.

**Spring:** Applying averages, interpreting data representations, integers, powers and roots, geometric reasoning, further sequences, applications of probability, perimeter, area and volume.

**Summer:** Fractions, percentages, ratio, proportion, formulae, solving equations, further transformations and a data investigation.

**How students will be assessed**

Ongoing assessment through half termly assessments, formal exams, quizzes, Self-study and through formative assessment strategies in the classroom.

**Self-study**

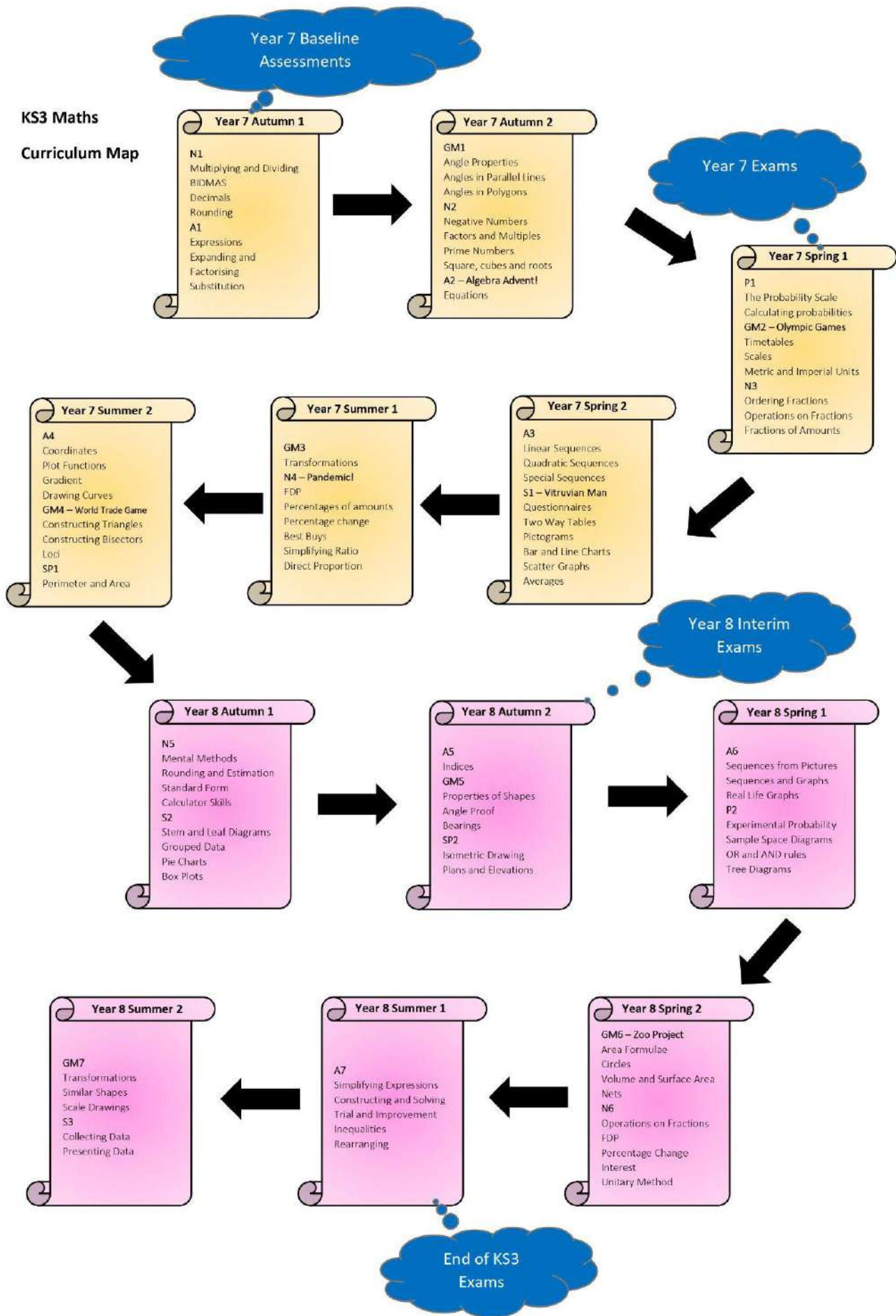
Students receive half an hour's worth of self-study each week on current or previous topics that can be accessed via google classroom.

**Parental support**

- Use teacher's feedback in your child's exercise book to support your child with topics they are finding difficult. The website [mymaths.co.uk](http://mymaths.co.uk) gives very comprehensive and well-structured activities.
- Ensure your child has all the relevant equipment including a scientific calculator.
- Ensure your child is confident with their times tables and basic number skills.

**Enrichment Ideas**

<p style="text-align: center;"><b><u>Suggested reading</u></b></p> <ul style="list-style-type: none"><li>● Can you solve my problems? by Alex Bellos</li><li>● The Number Devil by Hans Angus Enzensberger</li></ul>	<p style="text-align: center;"><b><u>Films &amp; documentaries</u></b></p> <ul style="list-style-type: none"><li>● Imitation Game (12A)</li><li>● The Martian (12)</li></ul>
<p style="text-align: center;"><b><u>Cultural experiences</u></b></p> <ul style="list-style-type: none"><li>● Bletchley Park, Milton Keynes</li><li>● Playing resources-based games (e.g. Settlers of Catan)</li><li>● Winchester Problem Solving club</li></ul>	<p style="text-align: center;"><b><u>Things to see and do locally</u></b></p> <ul style="list-style-type: none"><li>● Solent Air Museum</li><li>● Winchester Science centre</li></ul>
<p style="text-align: center;"><b><u>Top 5 Websites</u></b></p> <ul style="list-style-type: none"><li>● Mymaths: <a href="http://www.mymaths.co.uk">www.mymaths.co.uk</a></li><li>● PiXL timestable app: <a href="https://timestable.pixl.org.uk/Timestables.html">https://timestable.pixl.org.uk/Timestables.html</a></li><li>● Nrich: <a href="https://nrich.maths.org/secondary">https://nrich.maths.org/secondary</a></li><li>● UKMT Maths Challenge: <a href="https://www.ukmt.org.uk/competitions/solo">https://www.ukmt.org.uk/competitions/solo</a></li><li>● Numberphile Youtube Channel: <a href="https://www.youtube.com/channel/UCoxcjq-8xIDTp3uz647V5A">https://www.youtube.com/channel/UCoxcjq-8xIDTp3uz647V5A</a></li></ul>	<p style="text-align: center;"><b><u>Things we do</u></b></p> <ul style="list-style-type: none"><li>● NSPCC Number Day (February)</li><li>● Year 7 and 8 Puzzle Club (Monday lunchtimes in room 670)</li><li>● UKMT Junior Maths Challenge</li><li>● Maths in action enrichment talk (Summer term)</li></ul>





**Department:** MFL – FRENCH/SPANISH/GERMAN

**Periods per fortnight** 5

**Class Organisation:** **Mixed Ability**

**Course Overview:**

In year 8, students continue to speak and write across a wider range of contexts, including their town, food, fashion and holidays. Within these contexts, students develop the ability to use the past, present and future tenses, express a wider range of opinions and use more complex language. All skills in year 8 build on and extend learning from year 7. Students read longer and more challenging texts and begin to write extended pieces of writing.

**How students will be assessed**

Listening, Reading and Writing assessments each term. End of Key Stage assessment in May/June.

**Self-study**


All self-study tasks are set on Google Classroom. Self-study alternates between vocabulary learning on Memrise.com and online reading, listening and writing tasks on [www.sentencebuilders.com](http://www.sentencebuilders.com). Vocabulary should be practised daily to support students' recall of key vocabulary. Sentencebuilder.com tasks should take approximately 30 minutes.

**Parental support**


- Test vocabulary and spellings weekly
- Encourage students to use Memrise and [sentencebuilders.com](http://www.sentencebuilders.com) to practice their language at home.

**Enrichment Ideas**

<p style="text-align: center;"><b><u>Suggested Reading</u></b></p> <ul style="list-style-type: none"><li>● <b>French:</b> Language guide online French reading, 1jour1actu</li><li>● <b>German:</b> Deutsche Welle Deutsch Interaktiv [search online]</li><li>● <b>Spanish:</b> Thespanishexperiment.com stories</li></ul>	<p style="text-align: center;"><b><u>Films &amp; documentaries</u></b></p> <ul style="list-style-type: none"><li>● <b>French:</b> Kirikou et la sorcière, La prophétie des grenouilles, Mini-Loup(Wolf)</li><li>● <b>German:</b> Goethe Institut Erste Wege in Deutschland Harry gefangen in der Zeit (Deutsche Welle website)</li><li>● <b>Spanish:</b> Cortometrajes en Youtube (Short Films)- 'Cuerdas', 'El Regalo' 'Alma' 'El número', Nailed it! (Baking show!) Netflix</li></ul>
<p style="text-align: center;"><b><u>Cultural experiences</u></b></p> <ul style="list-style-type: none"><li>● <b>French:</b> Wildern Paris Trip, PenPal letters with school in northern France</li><li>● <b>German:</b> German exchange experience</li><li>● <b>Spanish:</b> Pen pal letters with partner school in Mallorca, Explore the Guggenheim Bilbao <a href="https://artsandculture.google.com/project/guggenheim-bilbao">https://artsandculture.google.com/project/guggenheim-bilbao</a></li></ul>	<p style="text-align: center;"><b><u>Things to see and do locally</u></b></p> <ul style="list-style-type: none"><li>● <b>French:</b> La Parisienne cafe/restaurant Romsey</li><li>● <b>German:</b> Stein Garten German bar Southampton</li><li>● <b>Spanish:</b> La Regata restaurant Southampton</li></ul>
<p style="text-align: center;"><b><u>Top 5 Websites</u></b></p> <ul style="list-style-type: none"><li>● <a href="http://www.memrise.com/www.quizlet.com">www.memrise.com/www.quizlet.com</a></li><li>● KS3 BBC Bitesize <a href="https://www.bbc.co.uk/bitesize/levels/z4kw2hv">https://www.bbc.co.uk/bitesize/levels/z4kw2hv</a></li><li>● <a href="https://www.busuu.com/">https://www.busuu.com/</a></li><li>● <a href="http://www.fluentU.com">www.fluentU.com</a> - Language blog</li><li>● <a href="http://www.lingo-play.com">www.lingo-play.com</a> - Language learning games</li></ul>	<p style="text-align: center;"><b><u>Things we do</u></b></p> <ul style="list-style-type: none"><li>● Foreign Language Film Club</li><li>● Arabic Club</li><li>● European Culture Club</li><li>● European Day of Languages</li></ul>



<p><b>All about me</b></p> <ul style="list-style-type: none"> <li>-My name is.</li> <li>-I am... years old</li> <li>- My birthday is on the...</li> <li>- I am (nationality)</li> <li>- Phonics</li> <li>-I have a...</li> </ul>	<p><b>My family</b></p> <ul style="list-style-type: none"> <li>-My brother is (personality adjectives + physical descriptions)</li> <li>- There are four people in my family</li> <li>- I have a snake!</li> </ul>	<p><b>What I like at school</b></p> <ul style="list-style-type: none"> <li>-I like French because it is fun and very important.</li> <li>-I have Maths at 12 o'clock.</li> <li>- There is a library.</li> </ul>	<p><b>My hobbies</b></p> <ul style="list-style-type: none"> <li>-In my free time I like to...</li> <li>- Present tense verbs (I play football)</li> </ul>	<p><b>Where I live</b></p> <ul style="list-style-type: none"> <li>-I live in a big house.</li> <li>- In my bedroom there is a table next to the bed.</li> <li>-In my town there is a...</li> </ul>	<p><b>Food &amp; health</b></p> <ul style="list-style-type: none"> <li>-I like vegetables because they are healthier than hamburgers.</li> <li>- I don't eat meat because I'm a vegetarian.</li> </ul>	<p><b>Fashion</b></p> <ul style="list-style-type: none"> <li>- I want that dress</li> <li>- I am going to wear a white T-shirt to the party.</li> <li>-My trousers are longer than yours.</li> </ul>	<p><b>Music</b></p> <ul style="list-style-type: none"> <li>-I like to listen to rock because it is relaxing and it makes me smile.</li> <li>-My favourite singer is... because...</li> </ul>	<p><b>Relationships</b></p> <ul style="list-style-type: none"> <li>-A good friend is + ADJ</li> <li>-I get on well with...</li> <li>-In the future I am going to get married.</li> </ul>	<p><b>Technology</b></p> <ul style="list-style-type: none"> <li>-I use my mobile phone to chat with my friends.</li> <li>-I think that my laptop is more useful than my tablet.</li> <li>-Advantages/Disadvantages.</li> </ul>	<p><b>Festivals &amp; celebrations</b></p> <ul style="list-style-type: none"> <li>-If I could I would like to travel.</li> <li>-Last year I went to France to celebrate Bastille Day.</li> </ul>	<p><b>My local area</b></p> <ul style="list-style-type: none"> <li>-I live in the countryside...</li> <li>-I love my house because it is modern.</li> <li>-My house is near the train station.</li> </ul>	<p><b>Social issues</b></p> <ul style="list-style-type: none"> <li>-If I had more time I would volunteer as...</li> <li>-Environment</li> <li>-Poverty and unemployment.</li> </ul>	<p><b>Holidays</b></p> <ul style="list-style-type: none"> <li>-If I was rich I would go to Fiji</li> <li>-My ideal holiday would be...</li> <li>- It rained</li> </ul>	<p><b>My studies</b></p> <ul style="list-style-type: none"> <li>-I like school because my teachers are caring. However, I think the rules are stupid.</li> <li>-My primary school used to be smaller than my secondary school.</li> </ul>	<p><b>My future career</b></p> <ul style="list-style-type: none"> <li>-When I'm older I want to be...</li> <li>-If I worked as a teacher it would be...</li> <li>-I wish I could find a well-paid job.</li> </ul>	<p><b>Freetime</b></p> <ul style="list-style-type: none"> <li>-I am playing football</li> <li>- When its raining I go to the cinema.</li> <li>-Music.</li> <li>-Eating out.</li> </ul>
--	--	---	---	--	--	--	--	--	--	--	---	---	--	---	---	--



MFL 5 YEAR JOURNEY

**Department: EDUCATION FOR LIFE**

**Periods per fortnight 1**  
**Class Organisation: Mixed Ability**

**Course Overview:**

Students complete a range of modules that are focused upon their economic and personal wellbeing. They are encouraged to develop their personal opinions and discussion skills. Careers and citizenship lessons are integrated into the Education for Life curriculum.

**How students will be assessed**

Student progress is monitored and assessed through self or peer assessment in each unit.

**Self-study**

Self-study is not applicable in this subject.

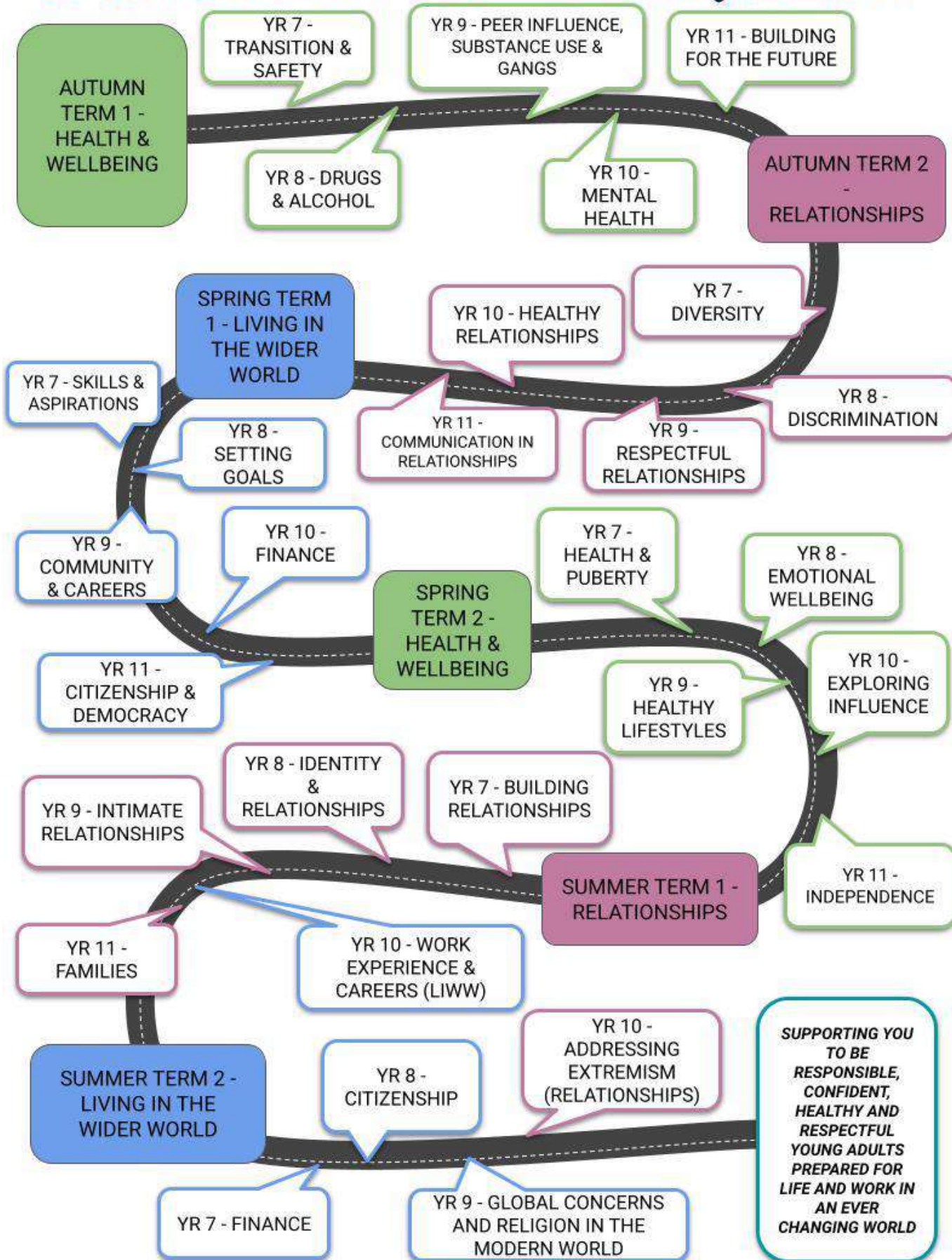
**Parental support**

Ensure that you encourage your child to keep up to date with current affairs.  
Support can be given to your child by encouraging debate and discussion at home.

**Enrichment Ideas**

<p style="text-align: center;"><b><u>Suggested reading</u></b></p> <ul style="list-style-type: none"><li>● A good clean edge, Vincent Caldy</li><li>● The garbage king, Elizabeth Laird</li><li>● The Boy at the back of the class, Onjali Q.Rauf</li><li>● Keeping Mum, Marianne Talbot</li></ul>	<p style="text-align: center;"><b><u>Films &amp; documentaries</u></b></p> <ul style="list-style-type: none"><li>● Modern Family</li></ul>
<p style="text-align: center;"><b><u>Cultural experiences</u></b></p> <ul style="list-style-type: none"><li>● National Trust</li><li>● Theatre trips linked to themes</li></ul>	<p style="text-align: center;"><b><u>Things to see and do locally</u></b></p> <ul style="list-style-type: none"><li>● Explore youth parliament</li></ul>
<p style="text-align: center;"><b><u>Top 5 Websites</u></b></p> <ul style="list-style-type: none"><li>● <a href="http://youngminds.org.uk/">youngminds.org.uk/</a></li><li>● <a href="http://stem4.org.uk/">stem4.org.uk/</a></li><li>● <a href="http://www.childline.org.uk/">www.childline.org.uk/</a></li><li>● <a href="http://www.bbc.co.uk/newsround">www.bbc.co.uk/newsround</a></li><li>● <a href="http://www.byc.org.uk/uk/uk-youth-parliament">www.byc.org.uk/uk/uk-youth-parliament</a></li></ul>	<p style="text-align: center;"><b><u>Things we do</u></b></p> <ul style="list-style-type: none"><li>● Lessons on mindfulness and wellbeing</li></ul>

# EDUCATION FOR LIFE - 5 YEAR JOURNEY



Department: **MUSIC**

Periods per fortnight **2**  
Class Organisation: **Mixed Ability**

**Course Overview:**

Students develop their understanding and knowledge of skills, technique and style through termly units. This includes work in the Digital Media Suite where Music Technology is explored further. The units in Year 8 are Axis of Awesome, Songwriting and Music for Film.

**How students will be assessed**

Student's knowledge and understanding are assessed through performance, composition or listening and evaluating tasks.

**Self-study**

Two self-study activities should be completed per term, for each unit of work. These will be set through Google classroom and be in the form of a mid-unit reflection and google form listening quiz.

**Parental support**

- Encourage your child to listen to and appreciate a wide range of music and styles.
- Take an interest and encourage independent research in the current musical unit.
- Encourage your child to take part in an extended curricular opportunity and instrument lessons.
- Listen to any form of 'Live' music.
- Use appropriate music software with a midi keyboard on the home computer.

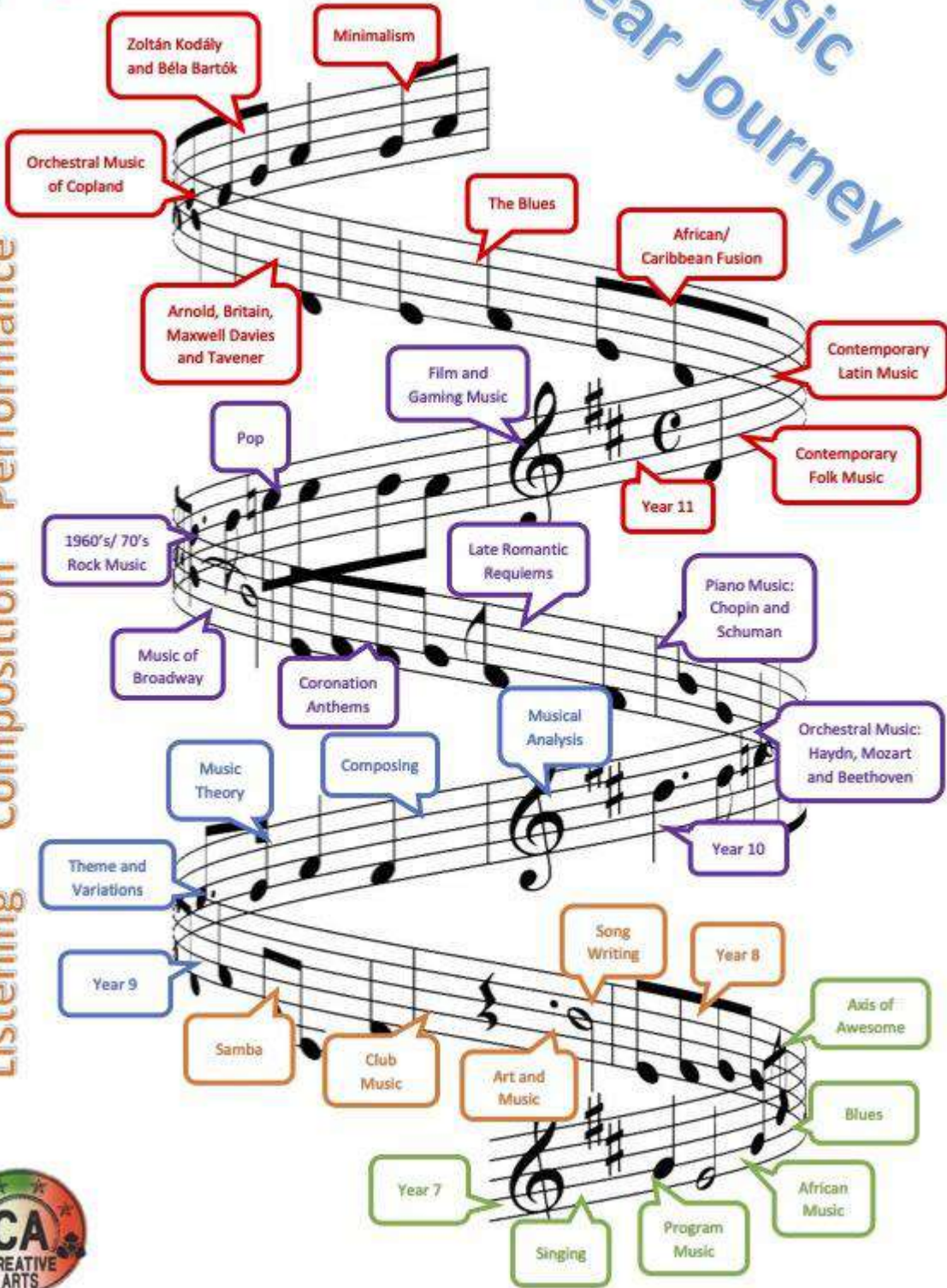
**Enrichment Ideas**

<p style="text-align: center;"><b><u>Suggested reading</u></b></p> <ul style="list-style-type: none"><li>● Piano &amp; Keyboard Chords: Easy to Use, Easy to Carry One Chord on Every Page by Jake Jackson</li><li>● Adventures In Songwriting: A Guide For Kids by Gina Boe and Sue Smith</li></ul>	<p style="text-align: center;"><b><u>Films &amp; documentaries</u></b></p> <ul style="list-style-type: none"><li>● The Young Person's Guide to the Orchestra (Benjamin Britten) narrated by Peter Pears. Can be found on youtube.</li><li>● "Score: A Film Music Documentary" by Matt Schrader</li></ul>
<p style="text-align: center;"><b><u>Cultural experiences</u></b></p> <ul style="list-style-type: none"><li>● Opportunity to perform at Soundbites events</li><li>● Performing in the Berry theatre</li></ul>	<p style="text-align: center;"><b><u>Things to see and do locally</u></b></p> <ul style="list-style-type: none"><li>● Musical productions at the Mayflower theatre</li><li>● Christmas/Summer concerts at the Berry theatre</li></ul>
<p style="text-align: center;"><b><u>Top 5 Websites</u></b></p> <ul style="list-style-type: none"><li>● Youtube piano tutorial videos: <a href="https://www.youtube.com/channel/UC9WDdfvgUbIPrFTUqBnQYQ">https://www.youtube.com/channel/UC9WDdfvgUbIPrFTUqBnQYQ</a></li><li>● BBC bitesize KS3 Music: <a href="https://www.bbc.co.uk/bitesize/subjects/zmsvr82">https://www.bbc.co.uk/bitesize/subjects/zmsvr82</a>.</li><li>● Music Theory: <a href="https://www.musictheory.net/">https://www.musictheory.net/</a></li><li>● Online music making: <a href="http://www.bandlab.com">www.bandlab.com</a></li><li>● Sheet music: <a href="https://www.musicroom.com/">https://www.musicroom.com/</a></li></ul>	<p style="text-align: center;"><b><u>Things we do</u></b></p> <ul style="list-style-type: none"><li>● School ensembles (KS3 choir, percussion ensemble, ukulele club, orchestra/brass band etc)</li><li>● Year 8 theory club and Year 8 Enrichment club</li><li>● Wildern Music Festival - Year 8 songwriting competition</li></ul>



# 5 Year Journey Music

Listening  
Composition  
Performance



Department: **PHYSICAL EDUCATION**

Periods per fortnight **4**

Class Organisation: **Broadly Banded & Mixed Gender**

**Course Overview:**

Students continue to build on the foundations of the concept-curriculum that were established in Year 7 with a greater emphasis placed on the students' depth of understanding each concept. This will then radiate to their ability to more effectively apply and transfer the six key concepts across a range of different practical activities and sports.

The **SIX KEY CONCEPTS** students are advanced in Year 8 are;

1. **Overcoming Opponents (Indoor):** Basketball, Badminton, Handball, Table Tennis, Volleyball.
2. **Overcoming Opponents (Outdoor):** Football, Rugby, Hockey, Netball, Cricket, Tennis, Rounders & Athletics.
3. **Aesthetic Technique & Performance:** Gymnastics, Dance, Trampolining & Athletics.
4. **Water Technique & Safety:** Swimming, Personal Survival, Synchronised Swimming, Water Polo
5. **Health-Related Exercise:** Fitness Classes, Fitness Suite Sessions & Outdoor fitness sessions.
6. **Sports Culture:** American Football, Lacrosse, Kabaddi, Aussie Rules, Gaelic Football.

In addition, students begin to learn the fundamental knowledge and understanding of how to lead a healthy, active lifestyle, wider understanding of practical activities and sports and begin their journey as part of **#TeamWildern**.

**How students will be assessed:**

Students will be assessed using the specially devised step-criteria for PE which analyses students ability to understand, apply and transfer concepts across a range of physical activities and sports in addition to an online theory test.

**Self-study:**

PE KNOWledge Quiz set each term - Set online using Google Classroom.

**Parental support**

- Ensure your child has the full & correct PE kit for **EVERY** lesson (*Even if injured students are encouraged to play an active role in lessons and so will be expected to change unless medically unable*).
- Remind your child to come **APPROPRIATELY EQUIPPED** for the varying weather conditions.
- Support PE staff in clarifying what is **PERMITTED & NOT PERMITTED** to be worn during PE lessons (See pg.13)
- Provide a written **NOTE** if your child is unable to fully participate in PE lessons.
- Encourage your child to take part in **ALL** aspects of PE & adopt a **POSITIVE** attitude towards physical activity.
- Encourage attendance at **EXTRA-CURRICULAR** activities.

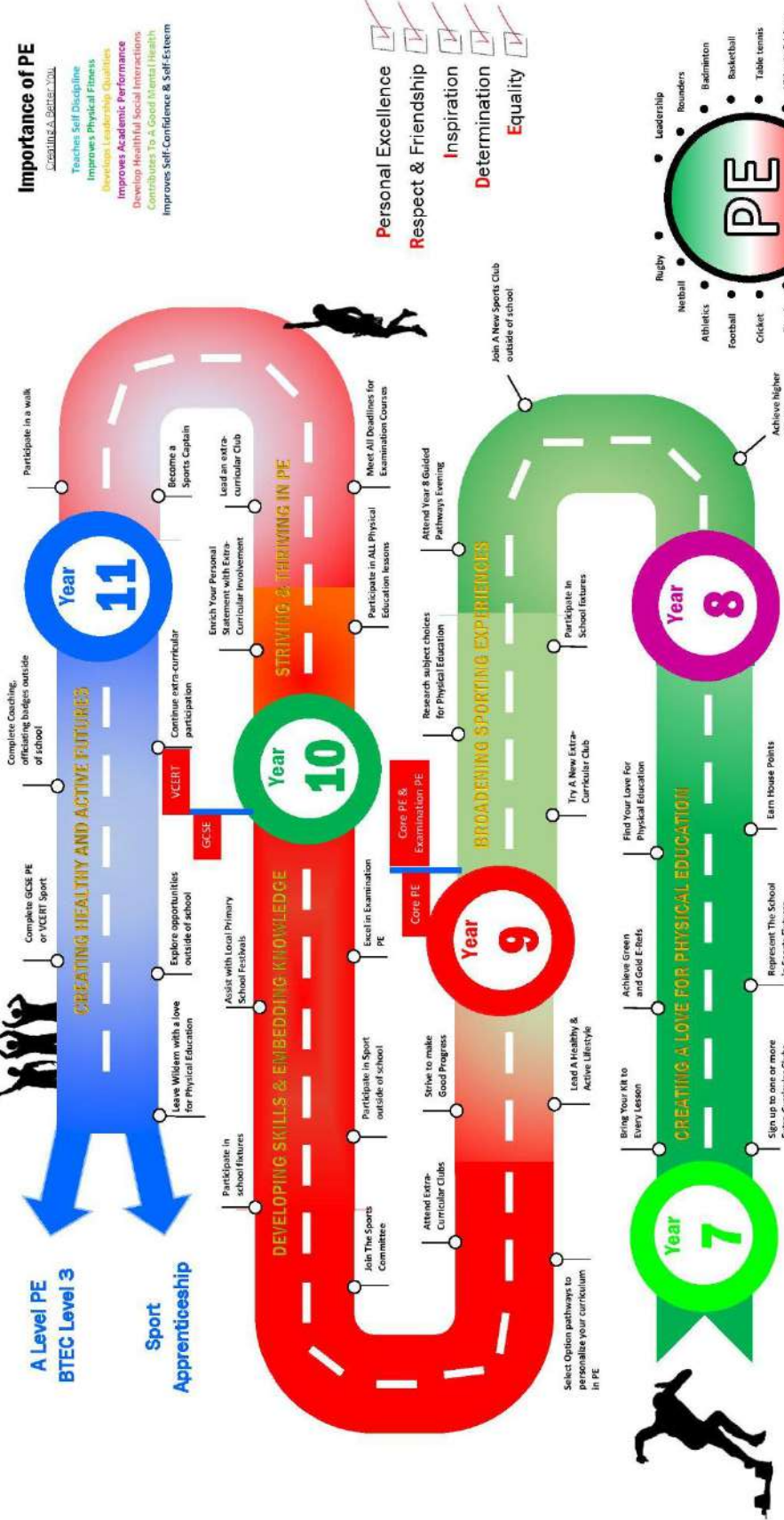
Visit our dedicated PE Twitter account to see all the fantastic enrichment opportunities available to you  
**(@WildernSchoolPE)**

**Enrichment Ideas:**

<p style="text-align: center;"><b><u>Suggested reading</u></b></p> <p><a href="#">Understanding the Concept-Curriculum</a> <a href="#">BBC Sport: Updates on Sport from UK &amp; Abroad</a> <a href="#">Sky Sports: News and Updates from the World</a></p>	<p style="text-align: center;"><b><u>Films &amp; documentaries</u></b></p> <ul style="list-style-type: none"><li>• <a href="#">McFARLAND, USA</a> (2015) PG</li><li>• <a href="#">REMEMBER THE TITANS</a> (2000) PG</li><li>• <a href="#">THE BLIND SIDE</a> (2009) PG-13</li></ul>
<p style="text-align: center;"><b><u>Cultural experiences</u></b></p> <ul style="list-style-type: none"><li>• Join a Wildern sports club or a local sports club.</li><li>• Take part in sports fixtures locally, regionally, nationally &amp; internationally.</li><li>• Attend elite levels sporting events as a spectator.</li></ul>	<p style="text-align: center;"><b><u>Things to see and do locally</u></b></p> <ul style="list-style-type: none"><li>• <a href="#">Southampton FC</a> @ St Marys</li><li>• <a href="#">Hampshire Cricket</a> @ The Ageas Bowl</li><li>• <a href="#">Trojans</a> Rugby, Hockey &amp; Squash Club</li><li>• <a href="#">Southampton Athletics Club</a></li></ul>
<p style="text-align: center;"><b><u>Top 3 Websites</u></b></p> <ul style="list-style-type: none"><li>• <a href="https://www.bbc.co.uk/bitesize/examspecs/zxbg39q">https://www.bbc.co.uk/bitesize/examspecs/zxbg39q</a></li><li>• <a href="https://www.brianmac.co.uk/">https://www.brianmac.co.uk/</a></li><li>• <a href="https://www.teachpe.com/">https://www.teachpe.com/</a></li></ul>	<p style="text-align: center;"><b><u>Things we do</u></b></p> <ul style="list-style-type: none"><li>• Weekly after-school sports clubs</li><li>• Competitive Teams and fixtures.</li><li>• Hosted Primary School Events.</li></ul>

# Wildern Physical Education Journey

## Every Student Matters, Every Moment Counts



Your Physical Education Journey starts here ...



Department: **RELIGIOUS EDUCATION**

Periods per fortnight 2

Class Organisation: **Mixed Ability**

**Course Overview:**

In Year 8 students build on the skills developed in Year 7 and apply these to philosophical questions and units of work such as 'Does God Exist'? and 'Resurrection Detectives' They also complete a unit exploring the religion of Hinduism.

**How students will be assessed**

Students will be assessed in line with Wildern Steps through a written assessment in each unit through which they will be given targets on how to develop and reach their step. There will also be a mixture of self and peer assessment in order to encourage students to reflect on their own and others progress.

**Self-study**

Self-study has been designed so that students can be creative and develop independence in selecting the way they present their work.

**Autumn:** Resurrection Detectives - Google Quizzes to consolidate previous knowledge

**Spring:** Hinduism Perfect Pilgrimage

**Summer:** Spirited Arts competition

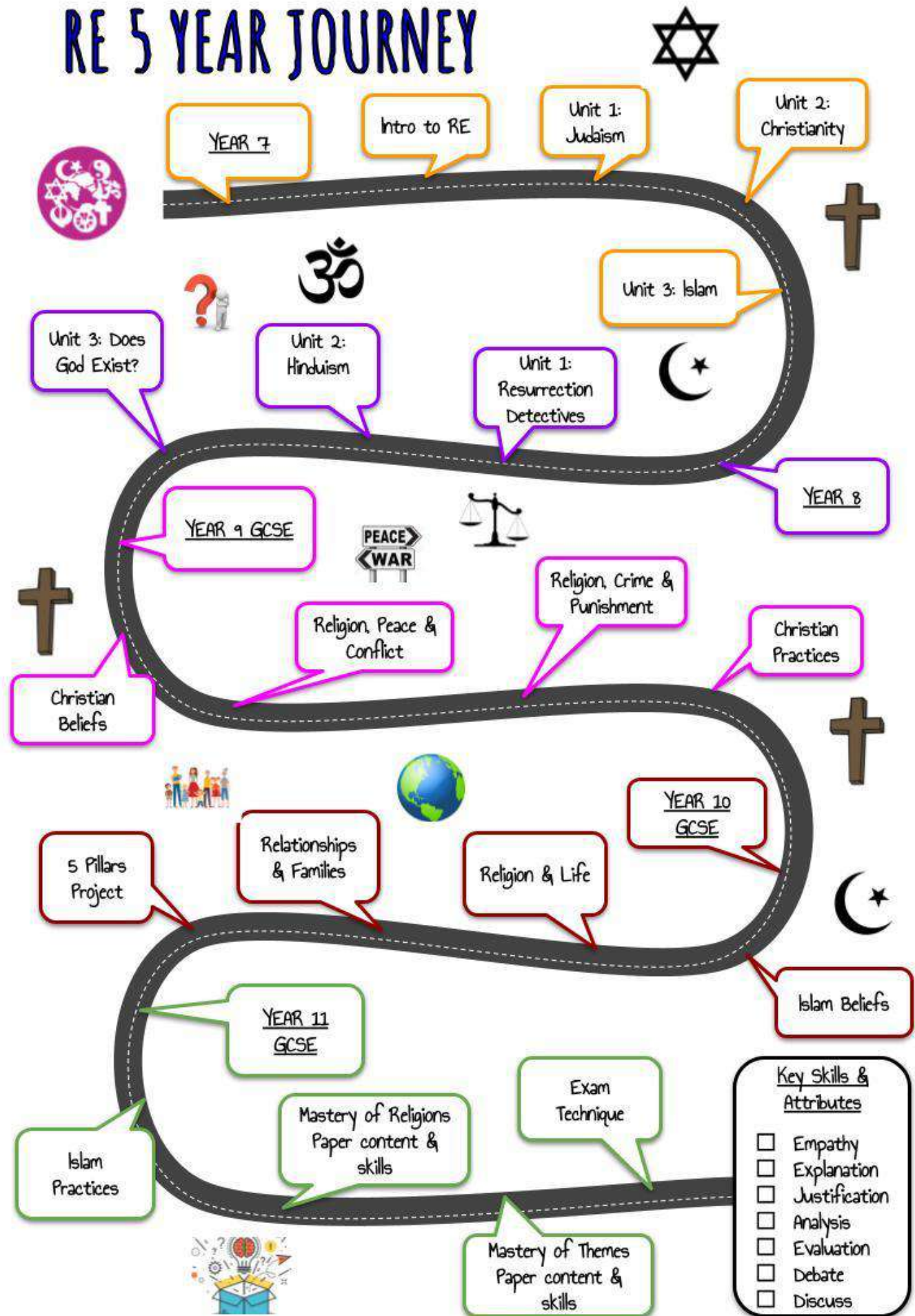
**Parental support**

- Encourage students to debate and discuss the topics and concepts they have covered in their RE lessons at home.
- Use the materials provided on Google Classroom to support students in their Self-study tasks.

**Enrichment Ideas**

<p style="text-align: center;"><b><u>Suggested reading</u></b></p> <ul style="list-style-type: none"><li>● Angel boy, Bernard Ashley</li><li>● Once, Morris Gleitzman</li><li>● Wenny has wings, Janet Lee Carey</li><li>● Old dog new tricks, Bali Rai</li><li>● My sister lives on the mantle piece, Annabel Pitcher</li><li>● Looking at the stars, Jo Cotterill</li><li>● I predict a riot, Catherine Bruton</li><li>● An act of love, Alan Gibbons</li></ul>	<p style="text-align: center;"><b><u>Films &amp; documentaries</u></b></p> <ul style="list-style-type: none"><li>● Story of God with Morgan Freeman s1 ep5: 'Why does Evil Exist'?</li><li>● Bruce Almighty</li><li>● Evan Almighty</li><li>● The Finger of God</li></ul>
<p style="text-align: center;"><b><u>Cultural experiences</u></b></p> <ul style="list-style-type: none"><li>● National Trust opportunities</li></ul>	<p style="text-align: center;"><b><u>Things to see and do locally</u></b></p> <ul style="list-style-type: none"><li>● Local Mandirs</li><li>● Local churches ((KCC, Holyrood church, St Michael Church, Franciscan Friary)</li></ul>
<p style="text-align: center;"><b><u>Top 3 Websites</u></b></p> <ul style="list-style-type: none"><li>● <a href="http://www.truetube.co.uk">www.truetube.co.uk</a></li><li>● <a href="http://www.REquest.org.uk">www.REquest.org.uk</a></li><li>● <a href="https://www.natre.org.uk/about-natre/projects/spirited-arts/spirited-arts-2020/">https://www.natre.org.uk/about-natre/projects/spirited-arts/spirited-arts-2020/</a></li></ul>	<p style="text-align: center;"><b><u>Things we do</u></b></p> <ul style="list-style-type: none"><li>● Use Google maps to show location of Israel</li><li>● Teach Hindu worship using artefacts and food for students to taste (if they wish to).</li></ul>

# RE 5 YEAR JOURNEY



Department: **SCIENCE**

Periods per fortnight **6**  
Class Organisation: **Mixed Ability**

**Course Overview:**

Students are able to develop their scientific knowledge and curiosity for the subject through both practical and content based lessons around 10 big ideas (Forces, Electromagnets, Energy, Waves, Matter, Reactions, Earth, Organisms, Ecosystems & Genes).

**How students will be assessed**

Students work is summatively assessed through assessed tasks which focus on developing subject knowledge and working scientifically skills. Termly formative assessments including a formal year 8 written exam test both Scientific Knowledge and Working Scientifically skills.

A revision guide may be purchased from the department if not already done so in Year 7.

**Self-study**

This is set every week from the start of the year on the Self-study Programme which will be shared via Google Classroom. Students will complete tasks to consolidate prior knowledge, enrich their scientific subject knowledge and challenge their understanding.

**Parental support**

- Encourage your child to keep up to date with Science in the news.
- Support your child with revision and self-study tasks.
- Follow Blogs/Twitter/Science You-tube channels that enthuse students learning.

**Enrichment Ideas**

<p style="text-align: center;"><b><u>Suggested reading</u></b></p> <ul style="list-style-type: none"><li>● Subscribe to ‘Science + Nature’</li><li>● Horrible Science- By Nick Arnold (Good titles include Disgusting Digestion, Electrifying Electricity)</li><li>● 101 Great science experiments- Neil Ardley</li><li>● The Evolution of Calpurnia Tate – Jacqueline Kelly</li></ul>	<p style="text-align: center;"><b><u>Films &amp; documentaries</u></b></p> <ul style="list-style-type: none"><li>● Mythbusters</li><li>● The Martian</li><li>● Science experiments: Robert Winston Operation Ouch (CBBC)</li><li>● Bang goes the theory (BBC)</li></ul>
<p style="text-align: center;"><b><u>Cultural experiences</u></b></p> <ul style="list-style-type: none"><li>● Survival club</li><li>● Range of activities in British Engineering and Science week</li><li>● Southampton Science and Engineering fair</li><li>● Join the STEM club</li></ul>	<p style="text-align: center;"><b><u>Things to see and do locally</u></b></p> <ul style="list-style-type: none"><li>● Planetarium, Chichester</li><li>● Blue reef Aquarium, Southsea</li><li>● Portsmouth Historic Dockyard</li><li>● Bursledon brick works</li><li>● Marwell zoo</li></ul>
<p style="text-align: center;"><b><u>Top 5 Websites</u></b></p> <ul style="list-style-type: none"><li>● <a href="https://www.sciencenewsforstudents.org/">https://www.sciencenewsforstudents.org/</a></li><li>● <a href="https://www.billnye.com/">https://www.billnye.com/</a></li><li>● <a href="https://science.howstuffworks.com/">https://science.howstuffworks.com/</a></li><li>● <a href="https://earthhow.com/">https://earthhow.com/</a></li><li>● <a href="https://www.natgeokids.com/uk/">https://www.natgeokids.com/uk/</a></li></ul>	<p style="text-align: center;"><b><u>Things we do</u></b></p> <ul style="list-style-type: none"><li>● British Engineering and Science week</li><li>● Survival Club (Wednesdays 3.15pm – 4.15pm)</li><li>● Stem Club (Tuesday 3.15pm – 4.15pm)</li><li>● Winchester Science centre trips</li><li>● Legoland</li></ul>



# Feedback Practice

## Feedback must cause thinking!



We believe marking and feedback should be used to identify students strengths and weaknesses and further students learning. We monitor students progress regularly and ensure students take ownership of the feedback they receive through meaningful reflection.

Feedback is given regularly through a variety of means and must always be acted upon by students in green pen.

- Staff will grade or mark a summative assessment at least three times a year, for which all students will receive a numerical score, percentage, and/or a WCS or GCSE grade within two weeks (At least twice for subjects at KS3 where students have 1 contact hour per fortnight).
- Current Levels of Performance are shared with students and parents via Wildern Assessment Data (WAD) two or three times a year depending on year group; this is to be recorded by students on their feedback fliers.
- Quizzes will be used frequently and marks recorded. These will include the testing of knowledge currently being taught, as well as previously taught knowledge.
- Literacy: identified errors will be circled sparingly (up to five) and identified with a sp/ww placed in the margin with the correct word written next to it, depending on the age and ability of the child. Students need to write out the correct spelling three times in the margin using look, cover, write, check.

Students work will be marked following the school's grading system and will be completed in a contrasting colour to student's work.

### The following symbols will be used by students and teachers: -

sp	- incorrect spelling	<u>Marking abbreviations:</u>
ww	- wrong word used	GCSE grade - 9 - 1
c	- incorrect capitalisation	VCERT/BTEC:- D*-P
//	- new paragraph needed	WCS:Wildern Current Step
p	- reconsider punctuation	WST: Wildern Step Target
sc	- poor sentence construction	
?	- vague, unclear	
	- target	
	- reflection	

Green pen will be used by students self-critiquing their own work, peer critiquing each other's work, and for all reflection tasks which could include: redrafting, reapplying knowledge, repeating a skill or practice, facilitated research.

## How can I support my child's learning?

There are numerous ways you can support your child: ensuring they are wearing the correct uniform, and that they turn up on time at the start of the day, being aware of their self-study schedule and many others. Sometimes it's hard to know where to start if you want to get more involved – so here is a list of things you might like to try.

### INSTEAD OF ASKING:

“How was school today?” (because they will say either “fine” or “okay”)

### YOU COULD ASK:

“What was the best lesson today?” and “why?”

“What new thing did you find out today?” Ask them to explain it to you.

“What did you struggle with today?” Ask them how they will deal with that.

“What are you most proud of today?” Ask if you can see the work.

One of the best ways of learning something is to explain it to someone else, so look at a subject book, find a recent page and ask them.....

“What is this?” “What does this mean?” “Who is this about?” “How did you get that result?”

Consider social factors, especially during transition when students first join us. *Rising hormones, friendship issues, exam pressure, behaviour and bullying all impact on our children at one time or another and it can affect their learning, so you need to know what's bothering them.*

“How are you feeling today?”

“Did you manage to sort out.....?”

“Did you struggle with anything today?” “Does that bother you?”

## Wildern Steps



### Wildern Steps

Our Wildern steps link to GCSE grades. Students receive steps to show their current level of performance (WCS) on the curricular content covered in Year 7 and 8 and then receive steps with GCSE grades in Year 9 – 11 often on new curriculum content.

Step	GCSE grade	Vocational grade
33	9	D*
30-32	8	D*
27-29	7	D
25-26	6	M
23-24	5	L2P
20-22	4	L2P
16-19	3	L1P
12-15	2	
9-11	1	
0-8	Not on the GCSE scale yet	

Students are tracked and given target bands across subjects in KS3 and this is refined at KS4 based on their KS2 scaled scores or teacher assessment as well as other baseline assessments in Year 7. Therefore it is an individual's progress towards their own targets that is important.

## WAD Reports

At Wildern we believe in building upon individual students' strengths and identifying areas for improvement. We monitor student progress through collecting Behaviours for Learning Colours and Wildern Current Step (WCS) grades at 2 key points in each academic year. These grades are transferred into the Student Planner during a tutor session as well as being sent to you electronically via email and via the INSIGHT parent app on the WAD & Reports Menu.

WAD is collected at 2 key points during Year 8. It will contain Behaviours for learning colours grade, a current Wildern step performance (WCS), on occasions an exam mark and a GCSE/Step Target Band based on prior academic attainment. This will be refined as they move through school.

Yr8 WAD1: Week beginning 16 January 2023

Yr8 WAD2: Week beginning 3 July 2023 (This will include subject exam results in steps and external GL assessment reports in English and Maths)

# Behaviours for Learning

Effective learning and teaching takes place where there is mutual respect, support, encouragement, security and independence and where all the members of the school share responsibility for developing this ethos successfully.

## **Encouraging a positive attitude to learning**

At Wildern School we want students to be willing to learn and ready to work to enable them to succeed.

To support and encourage this to happen, students need to have a positive approach to their own learning. A copy of the Attitude grade criteria is within this booklet.

A positive and hardworking attitude can make the vital difference to student performance.

## **The EREF (Achievement and Behaviour) System**

At Wildern there are a wide range of rewards that a student can receive.

In lessons students will most likely receive an Eref from their teacher. These come in the form of either Green (worth 2 points) or Gold (worth 4 points). These are awarded for excellent work and attitude in class as well as excellent pieces of self-study. There are a number of rewards that happen across the year group as a result of positive Eref scores. These can include recognition in assembly or class, postcards home, certificates, awards in celebration events, food vouchers and even lunch with the Headteacher!

However on occasions when a student breaks the school Discipline Policy a negative Eref will be written Amber (-1 points), Red (-2 points) or for the most serious issues, a Purple (-4 points).

These awards will be recorded automatically on the Insight portal (child and parent) and you will be able to see your child's current score each time you log onto the website.

A student's overall points total will be used in supporting the Wildern House Championship competition.

## **Successful Wildern Students will be demonstrating the following behaviours for learning:**

- ▶ a) Being respectful to teachers and other learners in the classroom at all times
- ▶ b) b1) Being punctual to lessons to maximise learning
- ▶ b) b2) Attending all lessons to maximise learning
- ▶ c) Being always appropriately equipped and ready to learn
- ▶ d) Being fully engaged in lessons, listening carefully and following instructions
- ▶ e) Completing all class work on Non-Examined Assessment (NEA) to a required standard
- ▶ f) Completing all self-study on time and to a required standard
- ▶ g) Working independently and actively seeking out appropriate opportunities to maximise your potential
- ▶ h) Understanding and acting on feedback
- ▶ i) Preparing appropriately for assessments or Non-Examined Assessments (NEA)
- ▶ j) Using appropriate subject specific vocabulary and skills



## Behaviours for Learning Coding:

<b>Y (Yellow)</b>	Demonstrating the behaviours for learning that will support achieving your target
<b>T (Turquoise)</b>	One or more behaviours for learning need improvement to support reaching your target
<b>B (Blue)</b>	Not demonstrating the behaviours for learning to reach your target

The comment column of your report will indicate which element of the 10 behaviours for learning needs to be prioritised in each subject

## Communication with Parents

At Wildern School we use a range of opportunities to communicate with parents regarding the progress and achievement of your child. In terms of reporting to parents, we go beyond the statutory requirements and utilise Parents' Evenings, Wildern Attitude Data collections (WAD) and the end of year report to keep parents informed. This approach ensures that a continual view of a student's progress is communicated throughout the academic year and negates the need to solely rely on an End of Year Report. More information about these elements are outlined.

## Reporting to Parents

The report system has been reviewed and adapted with the implementation of the new behaviours for learning system. At Wildern we strive to report on more than just the statutory requirements of attendance and progress data.

At the end of the academic year, a report will be sent out to all parents. It will contain many of the below:

- Attendance and late figures
- Behaviour for learning data
- Reflections from the tutor
- A summary comment from the Director of Progress and Achievement
- Subject information – what has been covered
- Final WAD for the year

## Parents' Evening

These evenings are an opportunity to discuss your child's progress with the teacher of each subject being studied. Parents Evenings will be run virtually via an online booking forum. How this will work will be communicated with parents prior to each event.

Yr 8 Subject Parent's Evening - 2 February 2023

# Google Classroom and the Google Suite



All Students have a Google Classroom for each of their timetabled lessons populated with resources provided by their teachers. Google Classroom can also be accessed via the homepage of the school website or directly via <https://classroom.google.com>.

Students need to click on the nine dots once logged into their school email account to see all the Google apps including Google Classroom it should be on the top right corner and look like this



Some departments also set up additional classes and resources and invite students and staff into them. Students will have an invite on their homepage in Google Classroom.

Google Classroom is updated whenever staff post resources, questions, work or information online and will have specific information from teachers, Students will also receive an email when Google Classroom is updated and parents can opt to have a daily or weekly summary of the work status via Google Guardians.

Students also have access via their School email to the full suite of Google Education Apps via their Google Drive. Below are links to some helpful videos which show how to navigate Google Classroom as well as answer questions.

All self-study tasks are set via Google Classroom but can be completed in a variety of ways.

**[Google Classroom Help YouTube Playlist](#)**

**[Google Drive Help YouTube Playlist](#)**

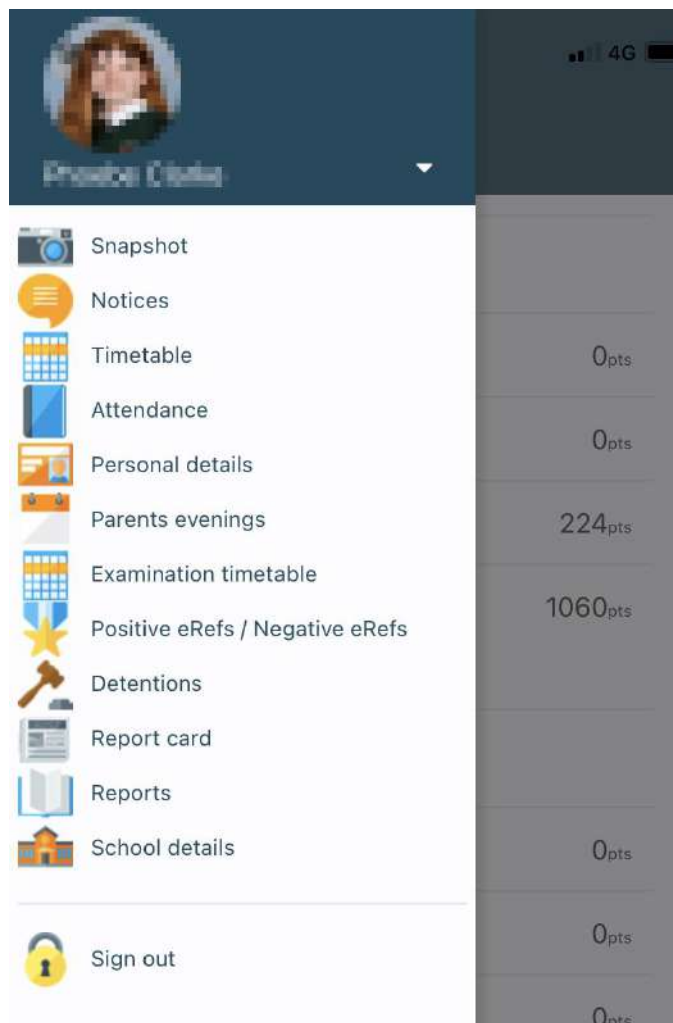
**[IT Guide Information Booklet](#)**

# Insight App

At Wildern we use the Insight App to communicate and keep parents informed and up to date as possible on their child's progress whilst at Wildern School. All parents/guardians will be sent a welcome email in the summer holidays for the Insight App. Parents can use the App for the following:

- Check Student Attendance
- Check Student Achievement and Behaviour
- Check Student Timetables
- Update Student and Parent Information
- Report an Absence
- Check the School Calendar
- Receive Messages from the School
- Book Parents Evening appointments

In order to set up the insight App we need to have a parent's email address on our system. Once you receive an invitation you can then register and log on to the Insight App.





**“We often miss opportunity because it's dressed in overalls and looks like work”  
— Thomas A. Edison**

## School Trips and Enrichment Opportunities

We offer a vast array of school trips, after school clubs, and enrichment opportunities for students, including educational day trips and residential throughout the academic year.

At Wildern, we believe that students gain valuable learning experiences, from going on cultural visits overseas to visiting local points of interest and participating in local community projects. We believe that educational visits and out-of-school teaching can bring learning to life by deepening our young people's understanding of the environment, history and culture and improving their personal development. Therefore, we are always seeking to bring the world into the classroom and take our students beyond it.

The school offers an outstanding range of opportunities for students to extend their interests outside the classroom. Each curriculum area looks for trips that will help further students' interest in and understanding of key subject material, whilst the aim of other visits is to foster independence, leadership and curiosity.

### **Residential Trips**



Wildern School has always offered a fantastic range of domestic residential and international residential visits. Some of our trips are extremely well-established and have been offered for many years; students and former students will talk glowingly about their school visits to Austria, Belgium, the USA, and Germany. Some have an entirely sporting focus (for example, our skiing trips and water sports trips). Others have had a particular curriculum focus (for example, our trips run by the History or Geography departments). Others have had a cultural focus (for example our exchange trips to Germany and Portugal).

# Enrichment Opportunities and Competitions



## Wildern School - Extra curricular - Autumn 2022



	MONDAY	TUESDAY	WEDNESDAY	THURSDAY	FRIDAY
<b>SCIENCE</b>	<i>Science drop-in</i> (All years) 911, 3-4pm <i>Gardening club</i> (all yrs) 304, 3-4pm	<i>STEM club</i> (yrs 7&8) 306, 3-4pm <i>Science drop-in</i> (All years) 911, 3-4pm	<i>Survival club</i> (all yrs) 910 - MTH, 3-4pm <i>Science drop-in</i> (All years) 911, 3-4pm	<i>Gardening club</i> (all yrs) 304, Break 1	
<b>MATHS</b>	<i>Maths drop-in</i> (all yrs) 312, 3-4pm	<i>Maths drop-in</i> (all yrs) 312, 3-4pm	<i>Maths drop-in</i> (all yrs) 312, 3-4pm <i>Puzzle Club</i> (yrs 7&8) 670, Break 2	<i>Maths drop-in</i> (all yrs) 312, 3-4pm	<i>Maths drop-in</i> (all yrs) 312, 3-4pm
<b>ENGLISH</b>	<i>Y11 Drop in session</i> 913 3-4pm <i>Yr 7 Homework Club</i> 913 Break 2 <i>Book club</i> (yrs 7&8) LRC, 3-4pm	<i>Breakfast club</i> (yr 10) 915, 7:45-8:25am <i>Spilling Ink</i> (yrs 7-10) 909 - AFR, 3:15-4pm <i>Book club</i> (yrs 9-11) D@art, 3-4pm <i>The Vox Student Newspaper</i> 901, TMM, Break 2 (all years)	<i>Breakfast club</i> (yr 11) 915, 7:45-8:25am <i>Literature Study</i> (yr 10) Power and Conflict Poetry 913, 3-4pm	<i>British Sign Language</i> (all years) 106 HMS Break 2	<i>Quotation Club (Year 11 only)</i> Literature exploration for the top grades at GCSE BGR Break 2 906



## Wildern School - Extra curricular - Autumn 2022



	MONDAY	TUESDAY	WEDNESDAY	THURSDAY	FRIDAY
<b>COMMUNICATION STUDIES</b>		<i>Code Club</i> (y7) 678 - LIN/MMS, 3-4pm			<i>Media drop-in</i> (yrs 9-11) 901 - CLS, 3-4pm
<b>TECHNOLOGY</b>	<i>Design &amp; Technology club</i> 509, 3-4pm (yrs 7&8)	<i>STEM club</i> (KS3) 306, 3-4pm <i>Textiles club</i> (all yrs) 515 - EJB, 3-4pm	<i>Cultural Cooking Club (KS3)</i> 512 - NMK/CFW/NLM, 3-4:30pm (once a month) <i>School Food Champions</i> (Years 7,8,9) - 512, NMK - 3-4pm		
<b>MFL</b>			<i>French Penpal club</i> (all yrs) 674, Break 2 <i>Italian Club</i> (all yrs) 672, Break 2 <i>Language Leaders</i> (Y9&10) 673, Break 2 <i>Foreign language film club</i> 672, Break 2 (all yrs) <i>MFL Homework Club</i> 674, Break 2 (all yrs)		



## Wildern School - Extra curricular - Autumn 2022



	MONDAY	TUESDAY	WEDNESDAY	THURSDAY	FRIDAY
<b>HUMANITIES</b>			<i>Philosophy Club</i> (all yrs) (specific dates) 705, 3-4pm <i>Geography Club</i> (all yrs) 504, Break 2		
<b>STUDY SUPPORT</b>	<i>LRC</i> (all yrs) Open 8-8:30am, Break 1, Break 2 and 3-5pm <i>Learning Support</i> 668, Break 1 and 2	<i>LRC</i> (all yrs) Open 8-8:30am, Break 1, Break 2 and 3-5pm <i>Learning Support</i> 668, Break 1 and 2	<i>LRC</i> (all yrs) Open 8-8:30am, Break 1, Break 2 and 3-5pm <i>Learning Support</i> 668, Break 1 and 2	<i>LRC</i> (all yrs) Open 8-8:30am, Break 1, Break 2 and 3-5pm <i>Learning Support</i> 668, Break 1 and 2	<i>LRC</i> (all yrs) Open 8-8:30am, Break 1, Break 2 and 3-5pm <i>Learning Support</i> 668, Break 1 and 2
<b>FOCUS GROUPS</b>	<i>These will take place at break times in the CPD room in block 9. They will be available in the following areas with days of meetings to be confirmed: Careers, E-Safety, Ed Tech, Mind, Body &amp; Soul, Eco group, Rights, Respect &amp; Community, Diversity</i>				



## Wildern School - Creative Arts extra curricular - Autumn 2022



	MONDAY	TUESDAY	WEDNESDAY	THURSDAY	FRIDAY
<b>ART / PHOTOGRAPHY</b>		<i>Year 7/8 Art Club - 3-4pm</i> 215 - ELL/LMG/JCM/ALO			<i>Year 9 Art Club - 3-4pm</i> 214 - RJG/CLF
<b>DANCE</b>	<i>School Production Rehearsals (yr 8 -11)</i> Da1 - LHG	<i>Year 7 dance club</i> MUH - LEH, 3-4:15pm <i>School Production Rehearsals (yr 8 -11)</i> Da1 - LHG	<i>School Production Rehearsals (yr 8 -11)</i> Da1 - LHG		
<b>DRAMA</b>	<i>Drama Club (yr 7/8)</i> AU1 - CEW, 3-4pm (Starting after Oct half term)	<i>School Production Rehearsals (yr 8 -11)</i> AU1 - KSH, 3-5pm	<i>School Production Rehearsals (yr 8 -11)</i> AU1 - KSH, 3-5pm		<i>School Production Rehearsals (yr 8 -11)</i> AU1 - KSH, 3-5pm
<b>MUSIC</b>	<i>Roar Choir (all yrs)</i> Mu1 - ECT, AM Reg (8:15 Start) <i>Jazz Band (all yrs)</i> Mu2 - SJL, AM Reg	<i>String Group</i> Mu1 - ECT, AM Reg <i>Year 8 Enrichment</i> Mu2 - SJL, AM Reg <i>Brass Group</i> Mu2 - AM Reg	<i>Year 7 Choir</i> Mu1 - ECT, AM Reg (8:15 Start) <i>Year 8 Choir</i> Mu2 - SJL, Am Reg (8:15 Start)	<i>Training Orchestra</i> Mu1 - ECT, AM Reg (8:15 Start) <i>Advanced Orchestra</i> Mu2 - SJL, AM Reg (8:15 Start)	<i>KS4 Choir</i> Mu1 - SJL, AM Reg <i>Ukulele Group</i> Mu1 - Break 1



**Every Student Matters, Every Moment Counts**





# EVERY MOVEMENT MATTERS



<b>Mon</b>	<b>Year 7 Boys Football</b> ASTRO Mr Sutherland	<b>Year 8 Boys Rugby</b> RUGBY PITCH Mr Wood & Mr Kinniard	<b>Junior Girls Football</b> MUGA / JNR FOOTBALL PITCH Miss Dobbs	<b>Senior Girls Football</b> SNR FOOTBALL PITCH Miss Clarke	<b>All Years Cheerleading</b> GYMNASIUM Miss Stevens-Broyd	<b>Fitness Club (Y10 Only)</b> Fitness Suite Glenn/Josh Leisure (Finishes at 4pm)	<b>Information</b>  <i>Clubs run from 3:15pm-4:15pm</i>  <i>Junior = Y7-Y8</i> <i>Senior = Y9-Y11</i>
<b>Tue</b>	<b>Junior &amp; Senior Netball</b> COURTS Mrs Pearson, Miss Clarke & Miss Dobbs	<b>Seniors Basketball</b> SPORTS HALL Mr Martin	<b>All Years Hockey</b> ASTRO Mr Ryan-Heaney	<b>Dance Live Rehearsals</b> GYMNASIUM & HALL Mrs Gates	NO MUGA Available (Cleaning Process taking place)		
<b>Wed</b>	<b>Y8 Boys Football</b> ASTRO / JNR FOOTBALL PITCH Mr Wood	<b>Y11 Boys Football</b> MUGA / SNR FOOTBALL PITCH Mr Wainwright	<b>Girls Rugby</b> RUGBY PITCH Miss Dobbs	<b>All Years Volleyball</b> GYMNASIUM Miss Clarke	<b>Junior Basketball</b> SPORTSHALL Mr Martin	<b>Fitness Club (Y11 Only)</b> Fitness Suite Glenn/Josh Leisure (Finishes at 4pm)	
<b>Thu</b>	No Clubs due to School Meeting(s)						
<b>Fri</b>	<b>Y7 Boys Rugby</b> RUGBY PITCH Mr Sutherland	<b>Year 9 Boys Football</b> MUGA / JNR FOOTBALL PITCH Mr Collings	<b>Year 10 Boys Football</b> SNR FOOTBALL PITCH Mr Morrison & Mr Smith	<b>All Years Badminton</b> SPORTS HALL Mr Wainwright	<b>Swimming Club (After Oct ½ Term)</b> Swimming Pool Mr Wood		



# EVERY ACTION COUNTS





# The House System

Every member of the school community, excluding the Executive Head teacher, Head teacher and the House Championship coordinator, is a member of one of the six houses. Naming the schools houses was voted upon by students and staff in 2012 who decided to represent Hedge End's rich strawberry growing heritage and so Houses are named after specific varieties.

The make up for each house is spread across all year groups, with two/three tutor groups being allocated to each house. Students in that tutor group will continue to represent that house for the full five years at Wildern whilst being supported by all other staff who are house members. Heads of house are all from the schools Senior Leadership team and are ably assisted by the House Captains who form a focal point for the organisation and delivery of events across the school, while also publishing results on the House blog pages and screens across the school.

## Ethos

The Wildern House Championship is designed to allow all students, of any ability, aptitude or talent, to participate in a yearly competition. The championship is open to all, and every member of the school community will have the opportunity to participate individually or part of a team.

## Heads of House

<b>ALBA</b>	<b>BEDFORD</b>	<b>DRISCOLL</b>	<b>JUBILEE</b>	<b>PAXTON</b>	<b>SOVEREIGN</b>
					
<b>Mr Knight (Orange)</b>	<b>Mrs Thornton (Green)</b>	<b>Miss Jones (Yellow)</b>	<b>Mrs Wheeler (Purple)</b>	<b>Mrs Warner (Blue)</b>	<b>Mr Chance &amp; Mrs Cowan (red)</b>

## Points

<u>E.Ref Colour</u>	<u>Points</u>
GOLD	4
GREEN	2
AMBER	-1
RED	-2
PURPLE	-4

<u>Attendance</u>	<u>Points</u>
100% Term	4
100% Year	10 (Bonus)

<u>Calendar Event Points</u>
Bronze: 100, 70, 50, 30, 20, 10
Silver: 200, 140, 100, 60, 40, 20
Gold: 400, 280, 200, 120, 80, 40

These will be awarded for student attendance, e-ref's, and house competitions. The house with the most points at the end of the year wins the House trophy!



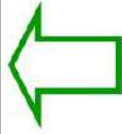
## Year 11 Head Student Team

Year 11 Senior Prefects      Focus Groups      LRC      Creative Arts      PE      MFL      English      Maths      Science      Humanities      Technology      Communication Studies      MAC      Transition Leaders      Learning Leaders

*Senior prefects are responsible for a particular area of school improvement*

### Year 11 Prefects:

- Each prefect to be part of a prefect team run by a Senior Prefect
- Part of a team for duties, parents evening and open evening
- Can be called upon by their senior prefect to support with events in their area of focus



### Student Leaders

#### Focus Groups

All students can attend a Focus group during tutor time. Members from each Focus group to represent their group at termly meetings.

- RRS Leaders
- Mind, Body and Soul Leaders
- Eco Leaders
- E-safety Leaders
- Googlers Leaders
- Careers Leaders

#### Transition Leaders

- Year 8: Transition leaders for Year 7 students to assist with tutor time activities, the running of the 'Big Room' and Induction Day
- Years 9 & 10: Transition Leaders to support students in lower years

#### Learning Leaders

- Year 8 students can apply to be a Learning Leader to observe teaching and learning across the school
- Learning Leaders to assist with school strategies e.g. the Wildern Attributes
- Learning Leaders can also be used to assist department development

#### School Leaders

- Students to be ambassadors for the school e.g. providing school tours
- Representing the school at community events e.g. The Big Clean

#### Diversity Leaders

- Students from all Year groups are welcome to apply
- Running campaigns e.g. Anti-bullying month
- Promote and model tolerance and respect amongst staff and students



### House Captains:

- Year 8 & 9 Junior House Captain
- Year 10 & 11 Senior House Captain
- House Captain to attend regular meetings; attend House events and assemblies; and promote participation in the House system



**'Every student matters, every voice counts.'**

*There are other aspects of student leadership that all students have the opportunity to be a part of: Department and Year team student as evaluators; being tour guides to visitors; getting involved in school events such as the Big Clean; being on interview panels.*

## Wildern Colours

Wildern Colours is an opportunity for students to be recognised for their hard work and determination in both PE and Creative Arts.

The Creative Arts and PE Colours:

- Acknowledge and value the commitment students give to Creative Arts and/or PE.
- Give a visible reflection of the pride we have when you represent us with a badge on the school jumper for Half Colours and a red tie with the Colours symbol for Full Colours.
- Recognise that students have gone above and beyond in these subject areas.

Half Colours will be awarded to those students who have made a commitment to these areas over two years. Half Colours will be given for regular commitment to and representation at Creative Arts and/or PE events that demonstrates dedication, determination, passion and pride for these subjects at Wildern. The earliest Half Colours can be achieved is at the end of Year 8.

Full Colours are an incredibly prestigious award and will be achieved by those students who have made a consistent commitment to these areas over four years. Full Colours will be given at the end of Year 10 for regular commitment to and representation at Creative Arts and/or PE events throughout a student's time at Wildern that demonstrates dedication, determination, passion and pride for these subjects.

For more information on how these can be obtained students should see their Creative Arts and/or PE teacher.

A celebration event will be hosted at the end of each year where these badges (Half Colours) and tie (Full Colours) will be awarded.



# Charities

Wildern School takes pride in supporting its community. Across the year we raise money for a number of local, national and international charities, building on our responsibilities as a Rights Respecting School.

This year, 2022-23, our focus will be:

## Local Charities

- Southampton City Mission
- Basics Food Bank Appeal
- Wessex Cancer Trust
- Marwell Zoo



**WESSEX**  
CANCER TRUST

## National Charities

- Rotary Shoe box Appeal
- Unicef Soccer Aid



**Rotary Shoebox Scheme**  
*"Spreading a little Happiness"*



**SOCCER AID**  
unicef

## International Charities

- Cancer Research
- Save the Children
- Comic Relief



**CANCER  
RESEARCH  
UK**



**Save the Children**

**COMIC  
RELIEF**

# Careers Support

## Curriculum support

Specific careers lessons take place in each year of Wildern.

### Year 8

Careers lessons remain a part of the 'Education for Life' lessons and specifically look at ways of supporting students with their pathway choices by giving them ideas about how different subjects will be useful for different careers. This is complemented by dedicated explanatory sessions in the Tutor Programme. Students will have access to a range of online careers tools. All students in Year 8 will get the opportunity to take part in a careers speed networking event. This allows students to meet local businesses and gain invaluable information about several different career sectors.



## Further support

A careers library is available in the Learning Resource Centre. Students can go there at any time to access the information that will help them as they move on from Wildern. A careers focus group also meet regularly and help to form and test careers initiatives and ideas.

We have a careers advisor, Ian Henser, who works within the careers area in block 3 on a Monday, Tuesday and Wednesday. He will meet all students in Year 11 at least once and have 1-2-1 interviews with all of them. He will also meet with identified Year 10 students during the summer term. During the pathways process in Year 8 Ian will also meet with identified individuals and groups of students to support them with making GCSE option choices. Ian is available Monday, Tuesday and Wednesday for drop in sessions: available at break, lunch and after school.

As above all students within the school will have access to online careers tools which can be used both inside and outside of school. These sites have key information about different career sectors, examination requirements for different careers and are easy to navigate around for information about all types of careers options and choices. Finally, students might wish to look over our alumni posters on display for all at the top of block 9 and in block 3.

Wildern school works closely with the Careers and Enterprise company to ensure it regularly assesses and evaluates its provision with the **Gatsby benchmarks** for good career guidance. This is reviewed at least annually, ensuring the programme is up to date and relevant. The School-wide Careers policy is reviewed regularly too, with the next review due: October 2022



Follow @wilderncareers on twitter or email [careers@wildern.org](mailto:careers@wildern.org)

## The Wildern Careers Ladder: Your journey from Year 7 to Year 11

### Post Wildern –

Join our Wildern Alumni network through the school website, and also access careers advice and guidance for continued support.

### Year 11 –

College Assemblies – with visiting Wildern Alumni  
Careers Fair!

WINK: Parents info after the careers fair

1 to 1 sessions with careers advisor

Help with Post-16 applications in My Future Education for Life Sessions

### Year 10 –

Careers Fair!

WINK: Parents info after the careers fair

CV writing and destinations sessions in  
Education for Life.

Practice Interview preparation sessions

Practice Interviews with Local Businesses

College Taster Days

Experience of a workplace



### Year 9 –

Enterprise sessions in tutor time

Work Skills day – focusing on developing transferable work skills

Experience of a Workplace Launch Wink

### Year 8 –

Careers and Employers ‘Speed Networking’ event

Opportunity to meet our careers advisor regarding Pathways choices

### Year 7 –

Year 7 Education for Life lessons

Launch of Careerpilot careers website sessions in tutor time – and access to this provision throughout your whole 5 years at Wildern!

Enterprise ‘Dragons Den’ themed Day



# The Learning Resources Centre (Library)

## When is the LRC open?



Monday	8.00am to 5.00pm
Tuesday	8.00am to 5.00pm
Wednesday	8.00am to 5.00pm
Thursday	8.00am to 5.00pm
Friday	8.00am to 5.00pm

**Please note that students should have their Student Planner with them at all times.**

The LRC is open at break, lunchtimes, before and after school, although times may vary. You may borrow or return items during these times. However, due to occasional meetings/events, the LRC may be closed after school at short notice.

## Who's Who?

Mrs Searle, Senior LRC Assistant

Miss Spraggs, LRC Assistant

Student Librarian Team, led by Year 11 Prefect Librarian



## How many items may students borrow?

They may borrow up to 4 items.

- **Books** are issued for 3 weeks. If you are still reading the book when the 'return date' is due, bring it to the LRC and we will re-issue it to you.
- **DVDs** are issued overnight and must be returned the following day (if borrowed on a Friday, items must be returned the following Monday).

## What happens if students return their books late?

It is the student's responsibility to ensure that books are returned to the LRC by the due date (stamped inside the book). It is at the discretion of the LRC staff to log an amber or red referral if books are overdue.

## Is there a charge for DVDs

No, but a fine of £1 per school day applies if they are returned late.

## Can students reserve items?

Yes. If a book is on loan, you can reserve it on the computer. Please ask at the LRC reception.

## Can students recommend a book/DVD?

Yes please! We welcome your ideas and will consider the purchase of any sensible suggestions. If we do not have books on a subject you are interested in, please let us know by completing a suggestion slip and placing it in the box on the desk.

## Can students use the computers?

There are several computers in the LRC and everyone has access to these. Please note, however, that computers must be booked on the day you wish to use them and are to be used for self-study only.

## Online Library

The LRC has gone online. You can log in with your Wildern email address and date of birth - DDMMYYYY. Select your book and select reserve at school.

## What help can students get in the LRC?

The LRC staff and team of student librarians can assist in finding information for projects and self-study. We can also help with book selection and what to read next.

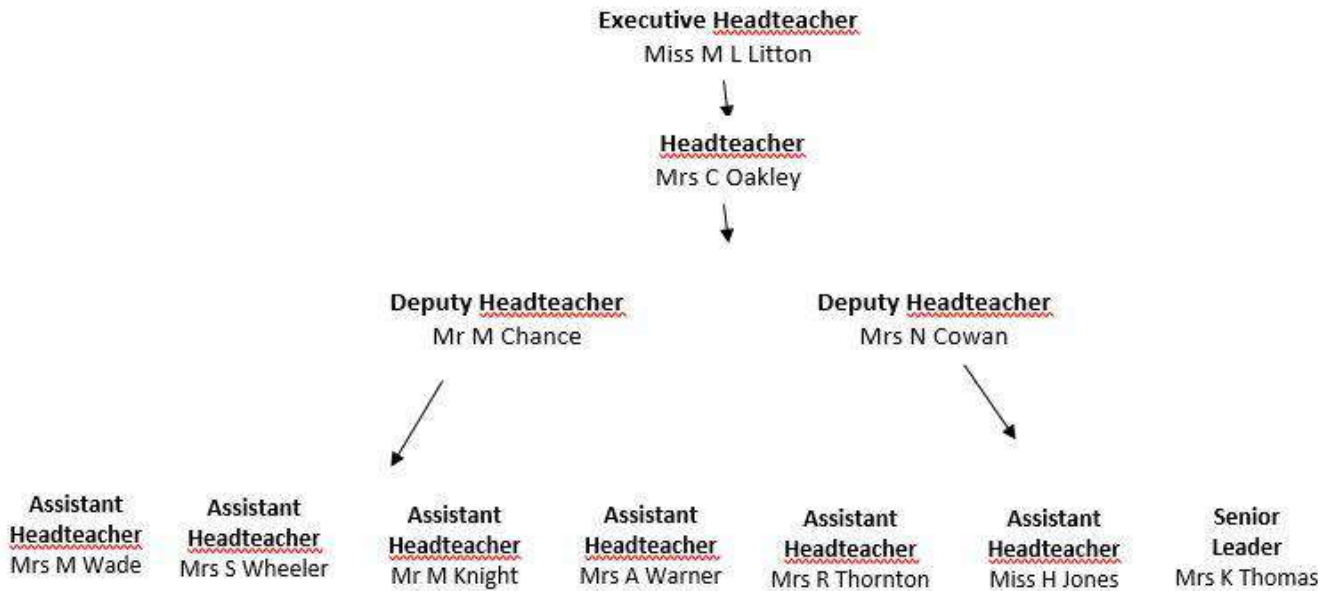
## What else goes on in the LRC?

- **LRC Reading Tournament** (Year 7) - Read and review books in the LRC. Work towards bronze, silver and gold certificates. Obtain gold erefs for each certificate awarded. Reviews are displayed around the LRC for students to read.
- **LRC Loyalty Bookmark** (Years 8, 9, 10 and 11) - These are stamped each time a student takes a book out from the LRC. Collect 6 stamps and be awarded a gold eref.
- **Children's Book Award** - (All years) - Read and review proof copies of titles that we receive from publishers. Reviews are forwarded to publishers for their interest. Gold erefs issued.
- **Reading Buddies** - (Years 7 & 10) - Year 10 students sit with Year 7s and listen/support with their reading. This is held once a week during tutor time.
- **SIG (School Improvement Group) Reading Group** - Meet in the LRC throughout the year to read and discuss group sets of books.
- **Blind Date with a Book** - (All years) - Held in February, students take out one of our books which is wrapped up with just the genre written on it. Students are then asked to unwrap, read and review it. Participants entered into a prize draw.
- **LRC Reading for Fun Fortnight** - (All years) - Held in March, **incorporating World Book Day**. When students take out a book during the fortnight, they are issued with a raffle ticket and entered into a prize draw. World Book day £1 vouchers are issued to students on World Book Day, giving them £1 off their purchase in book stores. Whole school reading promotions also take place at this time.
- **Scholastic Book Club** - (All Years) - Book Club brochures are distributed to students throughout the year. Scholastic publishers offer books at greatly reduced prices.
- **LRC Board Games Club** - (All years) - Held during Friday lunchtimes. A great way for students to make new friends.
- **Student Librarians** - We have a team of dedicated student librarians who support the LRC at break and lunchtimes. Vacancies are offered to year 7 students in October, where they are trained in various aspects of a librarian role, as well as confidence and team building. Most students stay with the LRC throughout their years at Wildern, until they leave in Year 11. Student Librarians can work towards obtaining 'Superstar Librarian' awards as well as 'Librarian of the Year' award.
- **Current Interest Promotions** - We are constantly updating our displays in the LRC to reflect what is happening around us, whether it be curriculum based, current news, sporting tournaments or the latest blogger!
- **Author Promotions** - We rotate our 'Author Focus' displays regularly to create interest and discussion on individual authors.
- **Author events** - Occasionally, we are asked by local bookstores to host author events at Wildern and are also invited to attend children's author events at local schools.
- **WINK Reading** - Parents are invited to attend a WINK event in the LRC to hear staff talking about the importance of reading and how to encourage their child to read more.



# Staff Structure

## WILDERN SCHOOL STAFF STRUCTURE



### Senior Leaders of Learning

