



“Happiness will grow if you plant the seeds of love in the garden of hope with compassion and care.”

— [Debasish Mridha](#)

TUTOR GROUP:

There are 12 Tutor Groups of approximately 30 students in Year 7. Each tutor group has a Tutor who will stay with their Year 7 tutor group until they leave in Year 11.

The Tutor's role is to meet with their tutor group every morning for registration, when they will check attendance, uniform, planners and pass on any relevant messages or information. They will also meet with individuals to set targets and discuss progress on a regular basis.

Each week your Tutor will accompany the group to a full Year assembly. Throughout the week each group will follow the 'This is me' structured programme of purposeful activities, such as discussions, study skills, quiet reading, organisation of self-study and so on, that will prepare you for the rest of the school day.

Your Director of Progress and Achievement (DOPA), Miss K Wyatt will work with you right through your school career until the end of Year 11.

You will have the opportunity to meet the other students in your tutor group and your Tutor on **Wednesday 26th June** when you will visit the school for the day.

You and your Parents will then be invited to return to school to meet your Director of Progress and Achievement, Tutor and Senior Staff on the evening of the **Wednesday 26th June from 6.00pm onwards.**

STUDENT SERVICES:



This facility has been running at Wildern for the last eight years and was set up to directly support the already very strong pastoral care across the school.

This resource is there to support you with a range of issues and respond as required to situations which may occur during the course of the day.

In many instances Student Services is the initial contact for your Parents/Carers prior to speaking to the Director of Progress and Achievement, who will continue to have overall responsibility for you and other students in your year group. Their aim is to help your Parents/Carers have a quicker more direct response to issues they may have.

Student Services Staff



Mrs K Thomas



Mrs E Brenton



Mrs E Millard



Mrs A Chandler

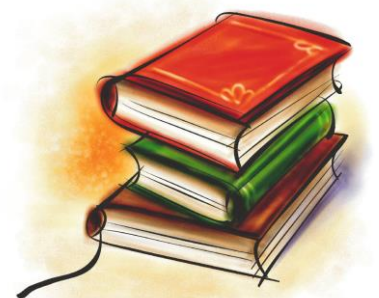
COMMUNICATION BETWEEN HOME AND SCHOOL:

The student planner: This is an important communication between parents and staff at school. It contains information about self-study, Eref points, letters home, important dates, examinations, student targets and detentions. It is very important that you bring it to school every day as you will be recording all your self-study in it.

Progress and Performance: The school regularly monitors your progress and collates subject and attitude information at least three times a year. This is known as WAD (Wildern Assessment Data). Your parents will receive one full written report at the end of the year.

Parents' Evenings: Your parents will be invited into school to meet your Tutor during the Autumn Term to discuss how you are settling in and the progress being made. There will be another parents' evening later in the school year to review progress further with your subject teachers.

Personal Learning and Review (PLR): PLR's will take place in tutor time to help you set personal targets each term. There will be an opportunity to review how you are doing and then the final review will be to evaluate all you have achieved.



CONTACTING THE SCHOOL:

We will always be pleased to discuss any issues you may have with your parent(s). Your parent(s) are welcome to make contact with us as soon as any concerns arise.



There are several ways for them to do this:

1. If a particular subject concerns you, they should write, email wildern@wildern.org, or telephone to ask the subject teacher to contact them and talk over the matter when convenient. (They can use your student planner to do this as well but you will need to show your teacher the note).
2. If your concern is more general or one of a social matter, they should write, email or telephone to ask your Tutor to contact them to arrange a time to talk the matter over.
3. If there is a serious concern or issue to raise they might like to contact the Director of Progress and Achievement.
4. If for any reason they wish to talk to a Senior Member of staff direct, they must contact the school either by telephone, email or letter and a Senior Teacher will arrange to see them as soon as possible and, in an emergency, at very short notice.
5. The Headteacher, Mrs Oakley is always pleased to meet with parent(s). Should your parent(s) find that after contact with other staff your concern remains, they should contact her. We are all concerned with helping our students.
6. The school will always endeavour to return telephone calls within 24 hours, and we will respond in writing as required within five to ten working days.

Please note it is important for your parent(s) to make an appointment, this will avoid an unnecessary waste of their time.



“We often miss opportunity because it's dressed in overalls and looks like
work”

— [Thomas A. Edison](#)



LEVEL 2

Rights and Respect (R&R)



LEVEL 2

Wildern is a UNICEF accredited Rights Respecting School. This means that the United Nations convention on the rights of the child (UNCRC) form the basis of everything that we do. Rights, respect and responsibility go hand in hand and this message is clearly demonstrated throughout all of school life.

You will learn about the importance of R&R through a variety of subjects and in a variety of ways. You will also spend time through the 'This is me' tutor programme and MSS (Moral Social Studies) exploring what rights are and why they are important.



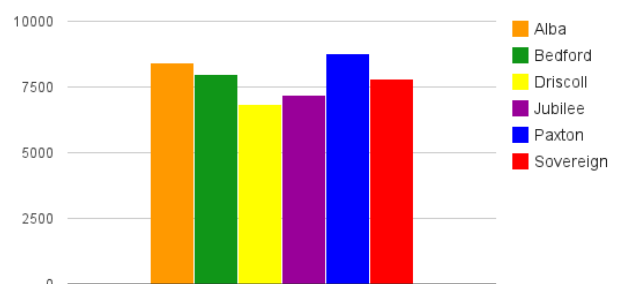
WILDERN HOUSE CHAMPIONSHIP:



The Wildern House Championship is a yearly competition which every student, and member of the school staff are involved in. The main principal is to promote participation, positive behaviour, and team work across all year groups.

There are six houses in total, and within these students individually and collectively compete to win points for their house. The house at the end of the year with the most points overall wins, and rewards are then given to every member in that house.

Points can be earned in a number of ways; these include e.refs, attendance, and subject specific events. Every subject across the school curriculum has different competitions running that all students can get involved and contribute points to their house.



House assemblies provide the chance for all members of the each house to meet, and discuss with their head of house the progress being made toward the winning of the overall trophy and organise teams for events. These will often be partly taken by House Captains from Year 11 who are voted in by their house to be role models and lead the house in its pursuit of victory.

“Participate, Enjoy, and Good Luck!!” Mr. Pike

TRANSITION LEADERS



Who are we?

We are mentors assigned to Year 7 tutor groups to help you settle in at the beginning of the year. We are a general helping hand and a friendly ear. As we are Year 8 students we have been through the transition up to secondary school and know exactly how it feels.

Where can you find us?

We can be found in Room 704 every Thursday lunch which is a chance to meet new people and play some games. We can also be spotted by our badges so come and speak to us if you see us around. If you are in Year 7 you will also see us once a week during your tutor times.



Article 31 (Leisure, play and culture): Children have the right to relax and play, and to join in a wide range of cultural, artistic and other recreational activities.



STUDENT LEADERSHIP:

At Wildern we feel that all students should have a chance to have a say about their school environment and most importantly the learning in the lesson. At Wildern there are lots of ways you can have your voice heard.

You could become a **school focus group member**. They meet every four weeks during tutor time with their other student members to discuss things related to school life. A focus meeting looks at a key aspect of school life, these have included Environment Issues, Community Issues, Mind Body and Soul, STEM and R&R.

Another way you could have your voice heard is by becoming a **Learning Leader**. At Wildern, students are trained to observe lessons and give feedback to teachers on what they liked in the lesson and what might be improved.



Although you can't do this bit until Year 8 – you could be on a department student evaluator group in Year 7. These groups meet each term with the Director of Learning to discuss what was good and bad about the learning in that subject. Being on one of these groups is a great way to really make a difference

to the learning experience for all your friends and fellow students.

On a simpler level, during tutor time there will be opportunities to vote on current topics.

You may also be asked to sit and meet members of the Senior Leadership Team as part of a group to talk about your experiences at school.

As you can see – there are lots of ways for you to get involved in improving the school and having your say.



“Quality means doing it right when no one is looking.”
— [Henry Ford](#)

ARRANGEMENTS FOR INDUCTION DAY:

Wednesday 26th June 2019

During the day you will find out a lot more about your new school. You will be introduced to your Tutor and get to know the rest of the students in your Tutor Group.

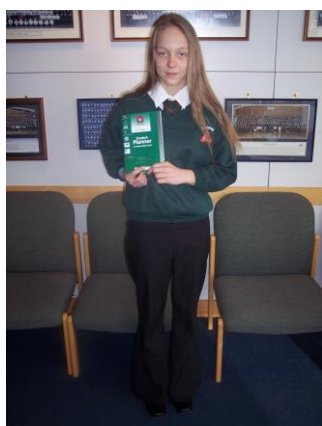
Please bring with you a pen, this booklet and either a packed lunch or the money to buy lunch (about £2.20). If you have free school meals, we will arrange this for you.

If you arrive by car, you should be dropped off outside of the school gates, ***not in the car park.***

Please meet your friends in the Piazza area where a member of staff and some older students will meet you. You will then be taken to the Main Hall. Miss Wyatt, your Director of Progress and Achievement will then tell you which Tutor Group you are in and introduce you to your Tutor.

During the morning you will spend time with your new Tutor Group, getting to know each other and your Tutor. You will also find out what lessons are like at the school.

Your day will start at 8.30am and finish at 2.45pm.



ARRANGEMENTS FOR INDUCTION EVENING:

We warmly invite all parent(s) of our new Year 7 students to return with you to the school on **Wednesday 26th June at 6.00pm.**

This will give your parent(s) the opportunity to be introduced to your Director of Progress and Achievement, Senior Staff and your Tutor.

On the evening your parent(s) will be able to purchase or order parts of the school uniform such as the tie, jumper and PE kit. All items of uniform are available from Skoolkit at 31 Leigh Road Eastleigh, SO50 9FF or via their website (further details are in the pack). If your parent(s) are unable to attend on the evening then uniform can be purchased from the shop or online.

Dan's Diner will be open, selling light refreshments such as drinks and cakes. The Chef will be there and will be able to answer any questions you or your parents have about the food available at Wildern.

The Music Department will also be available to discuss additional music: 1:1 tuition classes.

During the evening your parent(s) will be given the unique chance to see through photographs and a video of the activities that you participated in during the Induction Day.

The evening will also give your parent(s) the opportunity to ask any questions, or pass on any additional information that will help to ensure the smooth and happy transition from your Primary School to Wildern School.

Finally, can you tell your parent(s) that they need to be aware that car parking is very restricted; if you can avoid bringing a car or indeed are able to share a lift this would avoid congestion.

Parents are advised that given the large number on site, only parents and students should attend this evening.

WHAT DID I FIND OUT ON INDUCTION DAY?

- 1. My new tutor Group isin room.....
- 2. My Tutor is
- 3. My Director of Progress and Achievement is

WHAT MUST I REMEMBER?

- 1. What do I need to bring on my first day?
.....
.....
- 2. What time should I arrive?

KEEP SMILING AND DON'T WORRY



Tutor Group: _____

My Timetable of Activities for Induction Day

Time	Activity	Venue
8.15am	Meet in Piazza	Piazza
8.30 - 9.00am	Welcome Assembly	School Hall
9.10 - 9.40am	Getting to know my tutor group	Tutor Room: _____
9.45 - 10.30am	Session 1	Room: _____
10.30 - 10.55am	Break	Piazza / cafeteria
11.00 - 11.45am	Session 2	Room: _____
11.50 - 12.35	Lunch	School Hall / Courts
12.35 -1.15pm	Session 3	Room: _____
1.20 - 2.00pm	School expectations / forming a tutor contract	Tutor Room: _____
2.05 - 2.45pm	Assembly	School Hall

GETTING TO KNOW MY TUTOR GROUP

YEAR 6 INDUCTION DAY:

1) Speed dating introductions

Get into pairs and label yourself A and B
A's will sit at a desk; B's will get up and move around the room finding new partners.

30 seconds – student A tells student B as much as they can about themselves.

30 seconds – student B tells student A as much as they can about themselves.

30 seconds – thinking time (think of a question to ask your partner)

1 minute – ask questions about each other.

Complete the same process **3** times

2) Re-arrangers

Students will form a line or a circle, as requested by the tutor

3) Team-work unravel the circle

Form a circle and all put one hand in the middle, link hands with someone else in the circle. Put your other hand in and link with a different person (not the 2 people either side of you!!).

Can you work as a team to unravel the circle without unlinking hands?



4) Extension task

In pairs design a poster to advertise Wildern School.

Include pictures and information to show everything you already know about Wildern.



Make the poster as attractive and informative as possible.

Getting to know the school

Fact Finding Mission

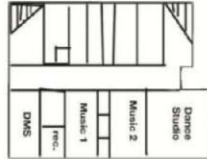
(Use the map on the next page and write your answers on the booklet)

- 1) How many steps are there leading up to the Community entrance of the sports centre?
- 2) Which block are the student bike sheds next to?
- 3) Which block is the LRC (Library) in?
- 4) What is the name of the large building opposite the water fountains?
- 5) Which block is the Year 7 Office in?
- 6) What is the name of the building opposite the student entrance to the sports centre?
- 7) How many floodlights are there on the MUGA?
- 8) In which block are the First Aid Room and Learning Support?
- 9) What sport can be played between block 3 and 5?
- 10) Name two subjects that are taught in block 9?





Upper Level



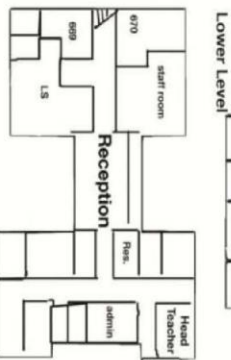
Lower Level



Upper Level

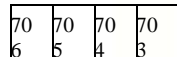


Lower Level



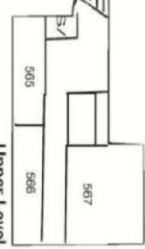
Tennis Courts
Fire Drill Point for
KS3 & KS4

The Lyceum

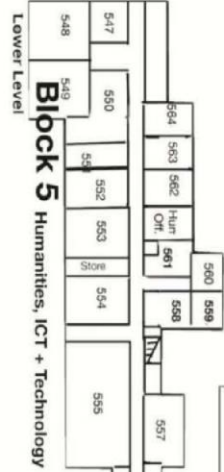


Block 7

Upper Level



Lower Level



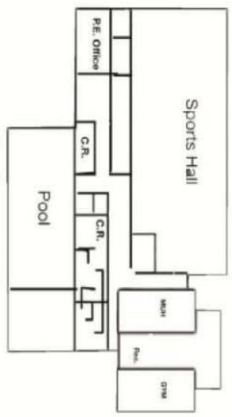
Block 5 Humanities, ICT + Technology

Block 6
Maths, ICT
+ MFL

The D@rt
Drama, music +
Dance

The Wave

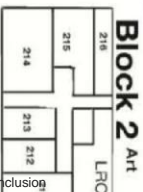
Leisure Centre



Lower Level



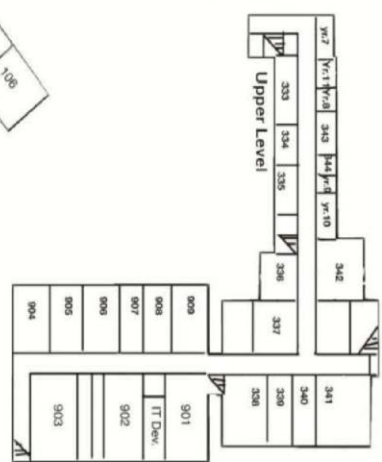
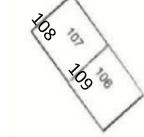
Block 2 Art



Block 3
Maths, Science +
DDPA

Block 1
Languages

Block 9
English, Science +
Media





Who have I met?



List down the names of everyone you have met during the day

1.	26.
2.	27.
3.	28.
4.	29.
5.	30.
6.	31.
7.	32.
8.	33.
9.	34.
10.	35.
11.	36.
12.	37.
13.	38.
14.	39.
15.	40.
16.	41.
17.	42.
18.	43.
19.	44.
20.	45.
21.	46.
22.	47.
23.	48.
24.	49.
25.	50.

_____’s Tutor Contract

As your tutor types the contract up on the board you need to write the key rules in your booklet.

1)

2)

3)

4)

5)

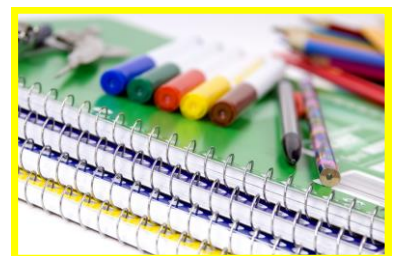
6)

7)

8)

9)

10)



FIRST DAY

FRIDAY 6TH

SEPTEMBER 2019

ARRANGEMENTS FOR THE FIRST DAY OF TERM:

Friday 6th September 2019

Please bring with you the equipment you will need to start your first day at school. (Over the page you will find information that guides you with this.) ***You must be in your full school uniform!***

Meet in the piazza as you did on Induction Day but at **9.45am**. You will then be brought to the hall in Tutor Groups. It is vital that as you enter the hall you are silent; ***the Headteacher and Senior Staff will be expecting this.***

Your Director of Progress and Achievement (DOPA) will speak to you as will the Headteacher, Mrs Oakley.

During the first part of the morning you will spend some time getting to know each other again and then you will start your school timetable. You will be the only year group in on the first day, which will help you to find your way around.

You will be given your timetable, a student planner and other general information.

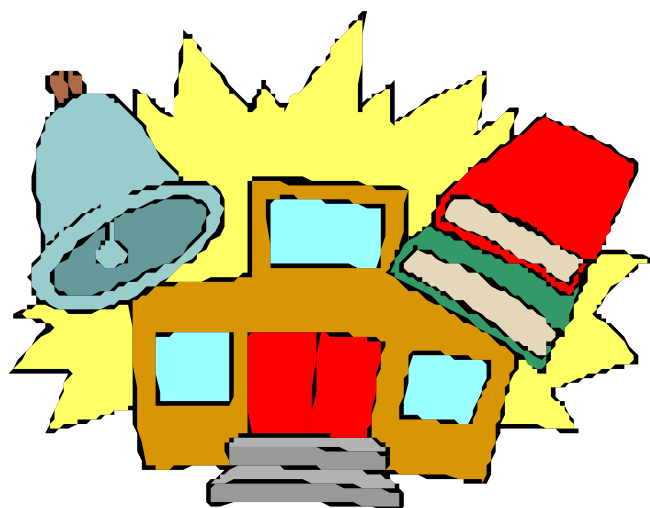


CHECKLIST FOR THE FIRST DAY:

CHECKLIST	✓ TICK
Uniform (named) consisting of: <ul style="list-style-type: none">○ Jumper○ Tie○ Skirt/trousers○ Shoes	
Bag (named) - strong and suitable	
Welcome Booklet	
Pencil Case (named) containing <ul style="list-style-type: none">○ Pen○ Pencil○ Ruler○ Rubber○ Coloured pencils○ Sharpener○ Calculator	
Packed Lunch/Money	

THE SCHOOL DAY:

The school day begins at **8.30am** and is divided into 5 teaching periods of 60 minutes with registration and tutor time in the morning.



It is very important that you are in your tutor room on time.

The day is divided up like this:

08.30			Warning Bell
08.35	-	09.00	Registration or Assembly
09.00	-	10.00	Lesson 1
10.00	-	11.00	Lesson 2
11.00	-	11.20	Break
11.20	-	12.20	Lesson 3
12.20	-	1.20	Lesson 4
1.20	-	1.55	Lunch
1.55			Warning Bell
2.00	-	3.00	Lesson 5
3.00			End of school day

EQUIPMENT:

For every lesson you should have with you a pen, pencil, pencil sharpener, a rubber, a ruler, a small selection of coloured pencils or felt tip pens and a case to put them in. ***Tippex is not allowed in school.***

You will also need a strong bag, not too large, to carry your equipment, books and belongings around school.

All equipment should be ***clearly named.***

Other equipment needed by each subject:

English: Pocket dictionary.

Maths: Basic four function calculator, compass and long ruler.

Technology: The following could be useful to have: long ruler, scissors, glue stick, calculator and coloured pencils.

Modern Languages: French or Spanish dictionary. (You will be told which Language you will be studying on Induction Day).

Art: You will need to provide an old shirt to protect your clothes.

Science: An apron will be provided for practical lessons.

Humanities: Access to an atlas and, ideally an encyclopaedia.

THE TIMETABLE:

A timetable helps you know where you should be and when.

The school week consists of 25 lessons. Each one is an hour in length. The timetable will run over two weeks and will tell you your lessons for those two weeks. You will notice that not all lessons are the same in both weeks, so read it carefully.

For each lesson the timetable tells you the subject you will study, the room you will be in and the teacher you will have.

This is what a timetable looks like. **(This is only an example.)**

	1Mon	1Tue	1Wed	1Thu	1Fri	
1	Maths JEB 320	Technology PMS 553	Science RDD 340	PS RUG ---	R.E. ← ELC 564	subject
2	Science RDD 342	English MHJ 908	History AMW 320	Maths JEB 320	English MHJ 909 ←	room
3	English MHJ 908	German GCH 102	PS RUG ---	Dance LHW DA1	Science RDD 340	
4	German GCH 102	Geography DAP 683	Maths JEB 320	Science RDD 340	Geography DAP HUT 1	
5	Music PJE MU1	Maths JEB 320	German GCH 102	Information MDK 565	Art ELL 213	teacher

	2Mon	2Tue	2Wed	2Thu	2Fri
1	English MHJ 909	Drama KJE HALL	RE ELC 564	English MHJ 908	Technology PMS 553
2	PS RUG ---	German GCH 102	Geography DAP 683	Maths JEB 320	PS RUG ---
3	Science RDD 340	Music PJE MU1	PSHE DCM 549	History AEF 550	Drama KJE AUD 2
4	Art ELL 213	Maths JEB 320	English MHJ 908	Information MDK 565	Technology SAD 551
5	RE ELC 564	Geography DAP 683	History KAB 561	Science RDD 340	German GCH 102

AMW – Mrs A Warner
 JEB – Mrs J Bronk
 ELC – Miss E Clark
 ELL – Miss E Lynch
 SAD – Ms S Dennison
 RDD – Mr R Doulton
 RUG – Mr R Grant
 KJE – Mrs K Hibberd
 PJE – Mrs P Ermisz

KDE – Mr K Evans
 AEF – Mrs A Floyd
 GCH – Mr G Horton
 MHJ – Mr M Jones
 MDK – Mr M Knight
 DCM – Mr D Martin
 REE – Mrs R Nicholas
 DAP – Mr D Porteous
 PMS – Mrs P Spiteri

AAS – Ms A Sweet
 LHW – Ms L Wills

An 'Exceptional' student is :-



Keen to do my very best.
Take pride in all my work.
Being considerate to others.
Not afraid of taking risks by asking questions and volunteering answers.
Find out how to improve.
Being an active participator in my lessons.
Able to transfer skills and ideas from one subject to another.

Bring all the right equipment.
Come into the room calmly and sensibly.
Arrive promptly to my lessons.
Listen and respect others opinion.
Pay attention when the teacher is talking.
Be prepared to answer it for the teacher to end the lesson before packing away.





SELF-STUDY:

Self-Study

Self-Study is a valuable extra learning opportunity. It is the policy of the school that self-study is an integral part of our curriculum and will be given to all students. You will be expected to complete self-study tasks and meet deadlines. Your Director of Progress and Achievement will monitor this on a regular basis. The work set will match your ability but there will be occasions when you find it challenging and will need to think about it a little more.

For Year 7 students work will be set frequently with a weekly or fortnightly deadline. Study tasks are designed to extend your learning beyond the classroom, encourage independent learning and develop the Wildern Attributes. (Determination, Curiosity, Pride, Reflection and Respect.) Subjects will begin to set self-study tasks to you at different times during Year 7. At Wildern we phase the introduction of self-study tasks across the different subjects to ensure you don't feel overwhelmed and have time to adjust to independent study.

Tasks should take up to thirty minutes to complete and the focus will always be on the quality of the work that you produce – not how long it takes you to complete it. You will be marked by the teachers, other students or yourselves. Progress will be reviewed, and you will be given guidance on how to improve your work.

All self-study tasks will be recorded in your planner but you may also have additional information on Google Classroom. You will be taught how to find the tasks on Google Classroom. If you do not have access to a computer at home you can book and use computers in the LRC where paper will be provided if you need to print.

THE LEARNING RESOURCE CENTRE (LRC):

The LRC provides resources for your pleasure as well as for your schoolwork and self-study.

There are over 14,000 books in the LRC as well as computers, newspapers, magazines and DVDs. We also have reading and chess clubs, occasional author visits and competitions for you to enter.

When you visit the LRC, leave your coat and bag in the boxes by the entrance. You must always carry your student planner with you at all times whilst in the LRC.

At some point in the first term you will be given an induction talk in the LRC where you will be told about the facilities in more detail. In the meantime, it is very important for you to remember that the LRC is used by the entire school and you must always consider others who are trying to work.

The LRC is open before and after school and during both breaks. You may book a computer for homework before and after school if you wish to.

LRC Opening Hours

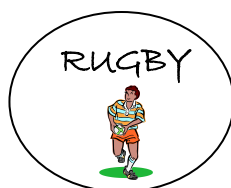
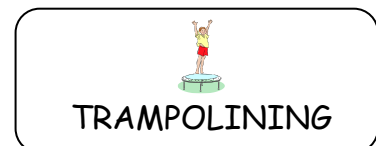
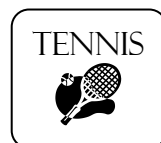
Monday	8.00am to 5.00pm
Tuesday	8.00am to 5.00pm
Wednesday	8.00am to 5.00pm
Thursday	8.00am to 5.00pm
Friday	8.00am to 5.00pm

YOUR FIRST COMPETITION IS THE 'READING SAFARI'. LOOK OUT FOR MORE INFORMATION ABOUT THIS IN SEPTEMBER.

ACTIVITIES:

There are many clubs and activities for you to join in the school. These take place at various times, either lunchtime or after school. You will be informed which clubs are available when you arrive. Below is an example of some of the activities that will be available.

LUNCHTIME AND AFTER SCHOOL ACTIVITIES



REWARDS:

At Wildern there is a wide range of rewards that you can receive.

In lessons you will most likely receive an Eref. These come in the form of either Green (worth 2 points) or Gold (worth 4 points).

These are awarded for excellent work and attitude in class. As well as excellent pieces of home study.

These awards will be recorded automatically on your profile page, and you will be able to see your current score each time you or your parents log on.



Throughout the year there will be opportunities to collect awards in our special celebration assemblies. In the final assembly of the year you will have an opportunity to receive gift vouchers, the value of which will depend on your total Eref score.

POOR CONDUCT OR BEHAVIOUR:

Hopefully there will be very few occasions when we would be concerned about your behaviour or effort. However, when the situations arise the information will be recorded on the Eref system under Amber incident (minus 1 point), Red incident (minus 2 points) or Purple incident (minus 4 points).

Depending on what a student might have done wrong, could result in a number of different actions.

These include:

- Verbal reprimand
- Short detention at break/lunch time/ after school
- Daily/weekly report
- Subject or Year detention after school
- Friday night school detention
- SLT detention
- Internal exclusion from lessons
- Fixed-period exclusion from school
- Meeting with a school Governor
- Permanent exclusion

In the most serious cases of breach of school discipline, students will be excluded from school pending a discussion with parents as to the future prospects of the student. This formal exclusion procedure is used infrequently. It will be used, for example, if a student is abusive to a member of staff. We have a clear behaviour policy which all students and staff are expected to follow.

UNIFORM

This uniform list outlines what you are required to wear.

If you are unsure of any aspect of school uniform please speak to your tutor for clarification.

- All uniform is available from Skoolkit, 31 Leigh Road, Eastleigh, SO50 9FF – 02380 629095
- Boys - Plain black trousers (jeans, cords and similar are not acceptable).
- Girls – Year 7-10 – Wildern School tartan kilt only. Year 11 – plain black skirts (A-line or box pleat only). Skirts are to be worn on or just above the knee (not mid-thigh) and not rolled up at the waist or black straight-legged/bootleg trousers worn on the waist. When worn, trousers should be sufficiently loose and not tight fitting or skinny fit.
- Black shoes with a low heel (max. height 3 cm - measured from the back of the shoe). Shoes should not be black leather trainers (example Trainers are ONLY allowed in P.E).
- Black socks/tights.
- Plain white shirt/blouse with collar or logo shirt, to be tucked in at the waist (not patterned, no adornments, not fashionably baggy).
- Bottle green “V” neck sweatshirt with school logo. From September all students will be expected to wear sweatshirts.
- School clip on tie
All students are required to wear ties. Top buttons should be done up as the tie is a clip-on style and is attached to the top of the shirt.

Summer uniform begins from May half term to the end of the summer term.

There is an optional logo summer shirt that can be worn without a sweatshirt and no tie.

- Short white socks (Girls only).
- **COATS/JACKETS**
Coats should be of a plain, sober colour and of un-patterned material. No logos, motifs or large lettering are allowed on outdoor coats.
Tracksuit-type jackets, denim, leather or leather-look coats, and hooded tops are not allowed.
- **JEWELLERY**
Students may only wear one plain stud in each ear. This must be worn in the ear lobe.
No other jewellery is allowed.
- **HAIR**
Students who have long hair must tie it back during activities where personal safety requires this. Hair must not be shorter than Grade 2. Hair colour/styles should not be extreme. Tram lines, coloured hair and braids with beads are not permitted.
- **MAKE UP**
Make-up, including nail varnish, should not be worn.
In addition, trainers, boots, jeans, denim or leather clothing are not acceptable.

The wearing of clothes which do not comply exactly with the above is not permitted at Wildern School and may result in school sanctions being taken.

PHYSICAL EDUCATION AND DANCE

Physical Education & Dance

Students need to be suitably dressed for PE and Dance. The following list has been prepared to cover the activities that the students will take part in. We are fortunate with the facilities we have available and so the activities are very varied.

Indoor/Summer

Dark green shorts
White polo shirt with Wildern logo/GCSE polo top
Red football socks or white sports socks
Trainers – please note fashion trainers are NOT suitable
One-piece swimming costume/swimming shorts, girls may wish to wear a swimming hat for long hair.
Towel
Goggles (optional)
KS3 Dance - green PE shorts (not leggings), White Wildern Polo shirt, bare feet

Outdoor

Dark green shorts
Green and White rugby shirt (optional)
Black or white long sleeved skins, to be worn under polo shirt (optional)
Red football socks or white sports socks
Trainers – please note fashion trainers are NOT suitable
Football boots (optional)
Plain black/navy tracksuit bottoms (optional)
Plain black sports leggings (optional)
Shin pads are advisable
For fixtures mouth guards must be worn for the relevant sport

ALL students do take part in outside activities in cold weather and occasionally get caught in the rain. No school green sweatshirts to be worn. Students may also want to bring a towel when involved in 'muddier' activities.

ALL students must tie back long hair and remove any jewellery for PE lessons as a safety measure. Trainers must be tied tightly and correctly. Valuables are taken into changing rooms at students own risk.

ALL PE and Dance kit must be fully NAMED (including each sock!)

Any problems with the above, please do not hesitate to contact the Director of learning

Wildern PE kit is stocked by Skoolkit.

Jewellery

All jewellery MUST be removed and body piercings are NOT permitted either as a school rule or on the grounds of health and safety.

ABSENCE AND ILLNESS:

If you are away from school you should bring a letter from home on your first day back, explaining the reasons for your absence. It is



important for your parents to telephone the school on the first day of absence.

If you feel unwell at the school you should go to the First Aid Room in Block 6.

Further to Government Guidance all holiday requests will not be authorised by the school, unless there are exceptional circumstances. If your Parents wish to still have a holiday during term time they must complete a leave of absence form.

Research clearly identifies that absence from school has a detrimental affect on a student's performance and their final GCSE grades.

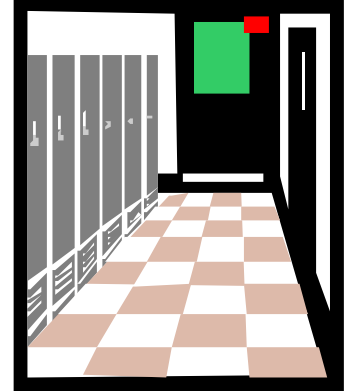
If you have an appointment during the school day, for example to go to the dentist, you must sign out at the First Aid Room and sign in on your return. You should have an appointment card or note from home to show the First Aider on duty.

LOCKERS:

There are some lockers available in the school, although it is not possible to provide all students with a locker.

However, they are not big enough for all the equipment and books that you will be using.

In addition, it is not always easy to come back to the locker each lesson and books will need to be carried with you during the day.



LOST PROPERTY:

Everything that is brought into school should be clearly marked. If your belongings are named, when found they can be returned to you. Any lost property found without a name will be kept in the First Aid Room.

It is advisable not to bring any extremely valuable items into school or large sums of money; **the school cannot take responsibility for individual student's possessions.**



MOBILE PHONES:

After a very thorough staff and student evaluation of hand held technologies students who wish to do so can bring a mobile phone to school. They must not be visible between 8.30am and 3.00pm.



If an opportunity arises under the guidance of staff, your phone can be used and you will be permitted to take them out during the lesson.

At all other times in the day your phone must be switched off and away.

BREAK AND LUNCHTIME ARRANGEMENTS:



The school provides an extensive range of food, which is sold in several locations around the school. Sandwiches can be brought but must be eaten in the dining hall or outside in the Piazza. Hot meals are served using a cafeteria system, each item is clearly priced.

All students must eat in the set areas they should not eat in any classroom or while moving about the school.

As we have a large school and there are over 2000 students and staff walking around during the break times, it is very important that you walk at all times. Sports and running games can take place on the hard courts.

During the breaks there will be lunchtime supervisors, supported by members of staff around the school site. If you require any help please see one of them straight away.

SCHOOL BUILDINGS AND THE ENVIRONMENT:

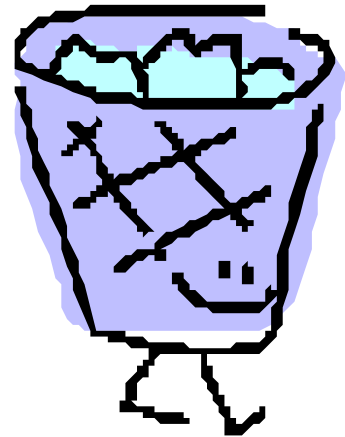
The school is very fortunate to have its very own professional theatre; The Berry Theatre can stage professional productions for up to 300 people to watch.

We have a large, state of the art, Performing Arts Building (D@rt) with facilities for Drama, Dance and Music, along with a Learning Theatre (The Wave) that has its own cinema screen. As a result, we are a very well equipped school and extremely proud of our school environment.

You will be able to take advantage of these facilities and we hope that you will be able to appreciate what a special place Wildern is for learning.

You have a big part to play in ensuring our school environment remains clean and tidy.

We expect all students to always use the bins provided and only eat in the designated areas of the school. The school has a clear environment policy and it expects all students to follow it.



Chewing gum is not permitted in school.

SCHOOL TRIPS:

There are a number of trips available to each year group both residential and day trips. There is no subsidy available for residential trips, however, requests for financial help towards the cost of day trips will be considered on an individual basis. Further information will be available from the Finance Office at the time of the trip.



HEALTH AND SAFETY:

1. You must not bring into school anything that is dangerous, for example knives.
2. The following are not allowed: **chewing gum; tippex; glass bottles or containers and energy drinks.**

BICYCLES:

Bicycles can be ridden to school but only if you have been issued with a permit. If you do so we strongly advise you to wear a cycle helmet. Bicycles must not be ridden on the school site.



THE START AND END OF THE SCHOOL DAY:

The car parking available is primarily for staff cars only; although there are places available at the front of the school for visitors. Further to this there are several disabled bays also available.

Please remind your parent(s) not to collect you from inside the school grounds.

If you are not attending an after school club or have been requested to remain in school, you should leave the school promptly and sensibly via the main entrance.

If you are being collected from school this should be done outside of the school gates. Students are told that they should not invite any other youth onto or around the school gates at anytime.

If you take the bus home, you must line up in an orderly way in the areas provided. You will be allowed on to the bus under the instructions of the staff on duty.

IMPORTANT STAFF:



Miss M L Litton
Executive Headteacher



Mrs C Oakley
Headteacher



Mr M Chance



Mrs N Cowan

Deputy Headteachers



Mrs M Wade



Mr M Jones



Mrs S Wheeler



Mr M Knight



Mrs A Warner



Mrs R Thornton



Mrs H Simmons

Assistant Headteachers

OTHER IMPORTANT STAFF:



Mrs N Holloway
Receptionist



Mrs S Giller
SENCo



Mrs J Buckley



Mrs L Harvey

First Aiders



Mr C Cornhill

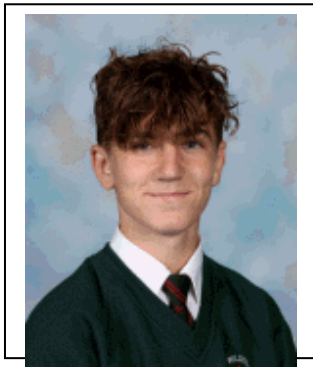


Mr S Richardson

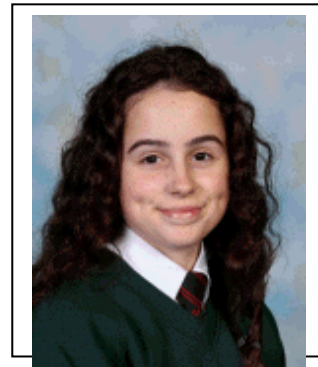
Site Managers

SENIOR PREFECTS:

Year 11 2019-2020



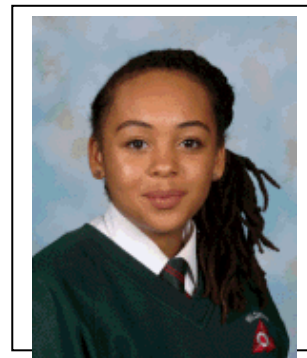
Rhys Hooper
Head Boy



Dorothy Litt
Head Girl



Sam Passingham
Deputy Head Boy



Rebekah Thompson-Phiri
Deputy Head Girl