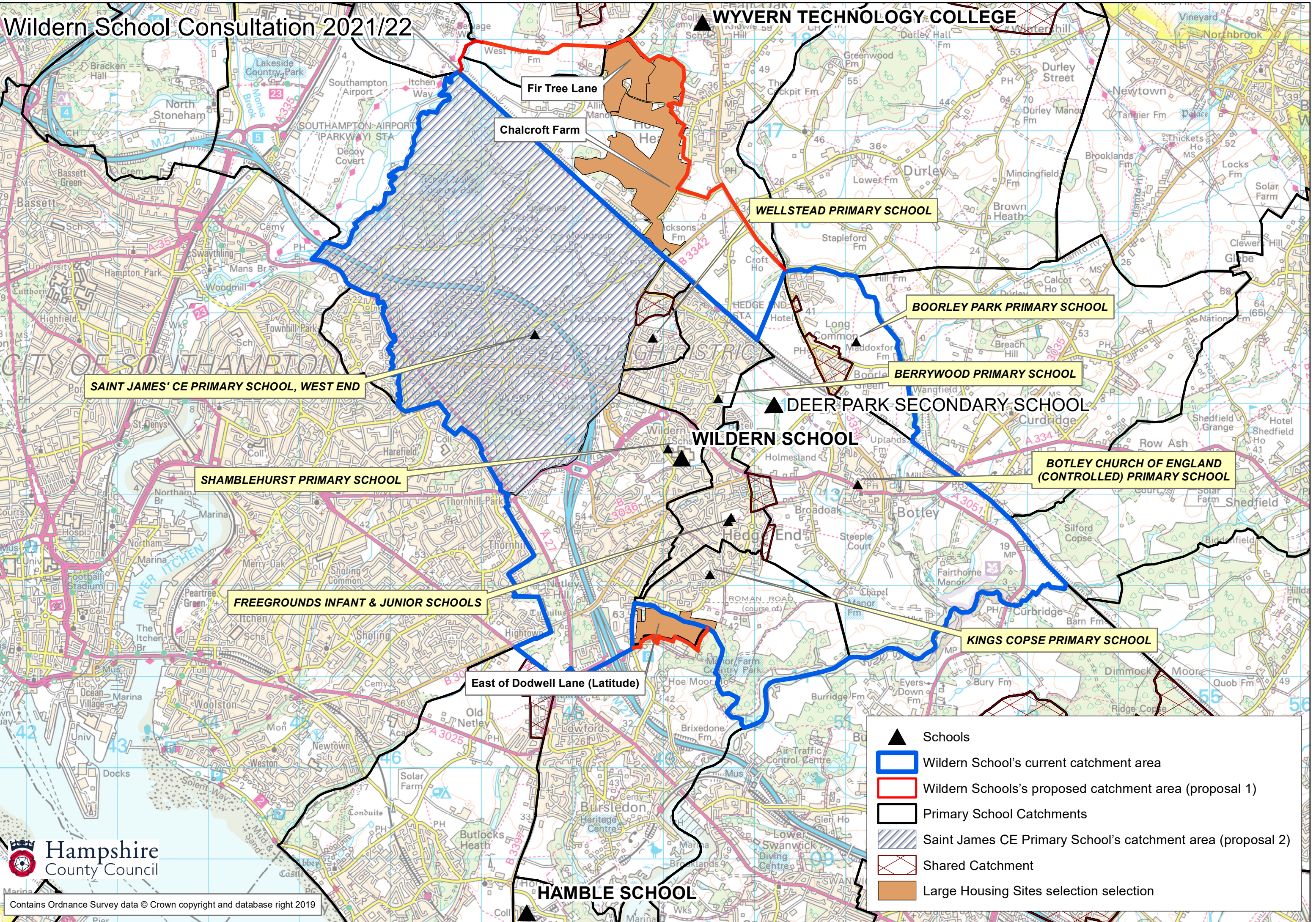


Wildern School Consultation 2021/22

WYVERN TECHNOLOGY COLLEGE



- ▲ Schools
- ▭ Wildern School's current catchment area
- ▭ Wildern School's proposed catchment area (proposal 1)
- ▭ Primary School Catchments
- ▨ Saint James CE Primary School's catchment area (proposal 2)
- ▨ Shared Catchment
- ▭ Large Housing Sites selection selection