



Every Student Matters  
Every Moment Counts

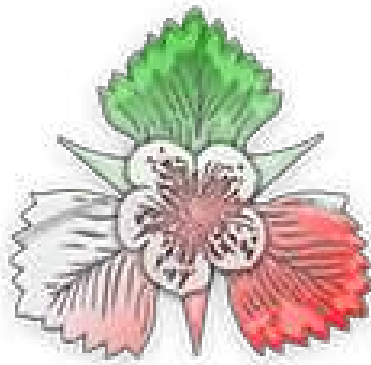


“Your future is in your hands.  
You just have to plant the  
right seeds.”

Master Choa Kok Sui  
Chemical engineer and businessman

# Parent Handbook Year 8 The Year of Choice

# **Wildern School Home – School Partnership**



**Care, Opportunity, Quality  
‘Every Student Matters, Every Moment  
Counts’**

September 2023

# Contents

	Page
A message from the Headteacher	4
<b>CARE</b>	<b>5</b>
Pastoral and Safeguarding	6-7
Home-School Partnership	8
Wildern Attributes	9
Diversity	10
#itsnotok	10
A Rights Respecting School	11
School Uniform	12-14
Prohibited/Banned Items	15
Attendance & Punctuality	16
Contacting the School	17
Member Login Area of School Website	18
Key Dates	19
Student Services	20
First Aid	21
E-Safety	21
Wildern as a Community School	22
<b>QUALITY</b>	<b>23</b>
The Wildern Way	24
Our Curriculum	25-26
The Pathway Process	27
Teaching and Learning	28
Class Codes	29
Self-study	30
How Can I support my child's learning?	31
Curriculum Teams	32
The Curriculum - Subjects	33-63
Feedback Practice	64
How can I support my child's Learning	65
Wildern Steps	66
WAD Reports	66
Behaviours for Learning	67-68
Communication with Parents	68
Reporting to Parents	68
Parents' Evening	68
Google Classroom and the Google Suite	69
Insight App	70
<b>OPPORTUNITY</b>	<b>71</b>
School Trips and Enrichment Opportunities	72
Enrichment Opportunities and Competitions	73-75
The House System	76
Student Leadership	77
Wildern Colours	78
Charities	79
Careers Support	80-81
The Learning Resource Centre	82-83
Wildern School Staff Structure	84

## A Message from the Headteacher

Dear Parent/Guardian,

As you are aware, at Wildern, we value our partnership with parents and we know that working together helps our young people achieve their best.

This parent handbook (whilst not definitive), is aimed at providing you with some key information that is easily accessible and to hand; rather than searching through our website. However, all information can be found on our website and/or within our members' area for parents to log into. We encourage you to use this area for support throughout the year.

To compliment this handbook and provide you with further information/learning, throughout the year we have our WINK programme for parents that will cover many aspects of school life, from the curriculum, E-Safety, Coping with exams, All things Google to dealing with teenagers and mental health and well-being to name but a few. A programme will be sent to all parents to highlight these evenings at the start of the year.

We also have Wildern Parent INSIGHT which allows you to view information about your child plus to keep you up to date with all the latest news, the news section of our website, our Facebook page (@wildernschool), X (twitter) feed (@wildernschool) or on instagram (@wildern\_school).

We believe that together we can ensure that our students, your children, achieve their very best and become the determined, adaptable, compassionate young people we all want them to be.

Best wishes



Ceri Oakley  
Headteacher



**“Happiness will grow if you plant the seeds of love in the garden of hope with compassion and care.”**

**— Debasish Mridha**

## Pastoral

At Wildern we place our students at the heart of the school community. We believe that all students can be successful in an environment where 'Every Student matters, every moment counts'. Wildern is a happy school, providing an atmosphere which supports students and enables success, development of character and nurtures their well-being. Our students know that they are valued as individuals with unique needs, strengths and potential and that we truly believe that our students can be the best they can.

### **Safeguarding**

Safeguarding is a term which is broader than 'child protection' and relates to the action taken to promote the welfare of children and protect them from harm. Safeguarding is defined as:

- protecting children from maltreatment
- preventing impairment of children's physical and mental health, wellbeing and development and health and development
- ensuring that children grow up in circumstances consistent with the provision of safe and effective care and
- taking action to enable all children to have the best outcomes

Safeguarding is everyone's responsibility. If you believe that a student within the Wildern School community is at risk, then please contact the school through our secure email address of: [safeguarding@wildern.org](mailto:safeguarding@wildern.org).

## Wildern School Designated Safeguarding Team

*We are all responsible for safeguarding...*

If you are concerned about the welfare or safety of anyone at school please report your concerns to the safeguarding team below, or by emailing [safeguarding@wildern.org](mailto:safeguarding@wildern.org)

			
Mr M Chance <i>Safeguarding@wildern.org</i>	Mrs C Oakley <i>Safeguarding@wildern.org</i>	Mrs N Cowan <i>Safeguarding@wildern.org</i>	Miss H Jones <i>Safeguarding@wildern.org</i>

			
Mrs K Thomas <i>Safeguarding@wildern.org</i>	Mrs J Fleeman <i>Safeguarding@wildern.org</i>	Mr G Bateman <i>Safeguarding@wildern.org</i>	Miss S Cooper <i>Safeguarding@wildern.org</i>

**'Every Student  
Matters,  
Every Moment  
Counts'**

	
Miss B Cooper <i>Safeguarding@wildern.org</i>	Ms L Duck <i>Safeguarding@wildern.org</i>

**Or call main  
reception on:  
01489  
783473  
and ask for a DSL.**

## Home – School Partnership

It is important that the school, the students and parents all work together to get the very best outcome for the young people who attend Wildern. By agreeing to the Home School Partnership, we are all committing to doing the best we can to support one another throughout a student's journey through school.



### As students we will:-

- Always try our very best in everything that we do.
- Maintain the highest standard of behaviour and respect towards all visitors and members of Wildern and the wider community.
- Follow all school rules including those on behaviour, uniform, punctuality and attendance.
- Uphold the behaviour for learning expectations listed in the student planner.
- Conduct ourselves in a manner that brings credit to us and the school on journeys to and from school, on school trips and in the local community.
- Follow the instructions of Prefects who act on behalf of the Headteacher.
- Take care of our environment.
- Always be honest and trustworthy.
- Be kind to each other.

### As Parents we will:-

- Ensure our child attends school, is punctual and will not take holidays during term time.
- Ensure our child is equipped for lessons.
- Provide an environment that encourages good self-study habits and support students with their home learning.
- Ensure our child is always dressed in uniform according to the school uniform policy.
- Work in partnership with the school in maintaining a high standard of behaviour, accepting and supporting the use of appropriate sanctions in line with the school's behaviour policy.
- Monitor our child's education by regularly checking and signing the school's student planner.
- Attend parental consultation meetings if required.
- Promptly notify the school of any changes in circumstances that may affect our child's well-being and their learning.
- Monitor my child's online activity and encourage the safe and appropriate use of electronic devices.
- Follow the guidance for communicating with school at all times.
- Contact the school if we have concerns and work with the school to resolve any issues rather than use Social Media.
- Communicate with all staff in school politely and courteously
- Read the communication home – the Wildern Weekly

### As staff at Wildern School we will:-

- Nurture our students' academic progress and their social and personal development.
- Encourage a strong sense of positive personal values.
- Encourage respect and empathy for others within the school and the wider community.
- Provide a safe and supportive environment in which a system of rewards and sanctions motivates and challenges students.
- Provide a broad and balanced education at the appropriate level for each individual.
- Review progress and set self-study as an integral part of the learning process.
- Provide a high level of teaching and learning within specialist areas.
- Work in partnership with parents and the wider community.
- Communicate formally and informally regarding attendance, academic and pastoral progress.
- Ensure all members of the school community embrace the notion of Rights and Respect.



## Wildern Attributes

At Wildern, we endeavour to create a culture where students believe that their qualities and talents grow through trying something, putting in effort and learning from their mistakes. This is based on developing students' growth mindset and allows them to have a belief that with time, practice and guidance, they can achieve anything they put their mind to. We do this by creating safe environments in which our students can learn without fear of failure. Our Wildern attributes encompass this wholeheartedly.

### **Reflection**

We ensure our students are aware of their strengths and areas of development. Lessons include dedicated quality reflection time for students to reflect and review their work, act on feedback and redraft work to improve upon it.



### **Determination**

Research suggests that effort is more important than talent or innate ability and so we have high expectations of all students and what they can achieve when they try. We challenge our students to be the best they can be and encourage them to take a leap of faith even if it means falling a few times. The determination we see in students who rise to these challenges find they reap the rewards and are successful in their achievements.



### **Respect**

Making mistakes is hard – students fear embarrassment, criticism, humiliation. However, a safe, secure classroom environment can ensure that students see that making mistakes are part of the learning process and from them, they can develop a better understanding. We do this through modelling and by making explicit the learning outcome from mistakes. We encourage students to respect one another for engaging in the learning process not just for achieving the correct answer.



### **Curiosity**

There is a feeling across the world that our heroes have superhuman abilities that lead them to greatness, success, stardom. However people with a growth mindset know that even heroes have to develop their curiosity, work hard and practise for their achievements. It is said that top performers practise 1,000 hours a year and to be world-class at something takes 10 years. Therefore we allow time for our students to practise their skills. This can either be distributed (spreads out study activities over time) or interleaved (mixes different kinds of problems within a single lesson). Students who are curious often seek solutions themselves, investigating and researching something and showing great independence which prepares them for the world ahead.



### **Pride**

Research suggests that when students are praised for what they have accomplished through effort, practice, study and persistence, they experience a sense of achievement and have the motivation to go on and take these achievements further. We encourage our students to take pride in these efforts, including in how they present their work, how they demonstrate their learning and recognising their own achievements, avoiding comparisons to those of their peers.



### **Kindness**

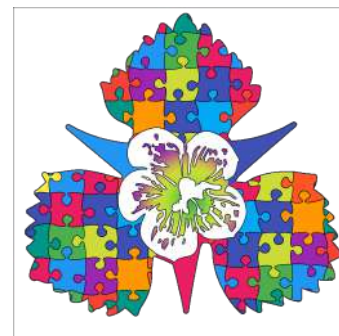
We live in a diverse community where everyone should feel welcome, included and equal. Everyone is unique and it is a combination of our differences that shape our view of the world, our perspective and our approach. In a world where the news can be dominated by acts of discrimination or violence due to someone's characteristics we must promote equality, diversity and kindness so our students grow into considerate, empathetic and caring individuals.



## Diversity

The Wildern symbol of diversity represents our beliefs that every member of our school community counts.

As set out in the Home-School Partnership we ask that students maintain the highest standard of behaviour and respect towards all members of the Wildern community and conduct themselves in a manner that brings credit to us and the school. We feel that having a sense of belonging at school can increase student emotional and physical wellbeing. This is equally as important as diversity and inclusion because all children should feel that their world is a safe place where people care about them and their needs.



To help them do this we spend time looking at and celebrating Wildern's diverse community. This is done through:

- Strong curriculum content across the school
- Student voice
- A focus group dedicated to celebrating and promoting equality and diversity
- Challenging those who aren't inclusive
- Working with agencies and charities from outside of school to support our community

Students get the opportunity to partake in activities across the school year where they are able to consider different cultures, religions, gender/sex, sexual orientation, age and disability and all potential characteristics. . Whenever you see this symbol it is communicating that we are learning about, supporting or celebrating the rich and diverse Wildern community that we are so proud of.

## #Itsnotok



Your children have every right to feel safe at school and it is important that all students are aware of when someone is being inappropriate towards them.

We are using the “#It’snotok” to promote awareness of what students need to be thinking about when they are facing unwanted sexual behaviours or contacts either in school or when out in the community.

Over the course of the school year we will be encouraging discussion through tutor time, assemblies and our strong RSE curriculum and will be sending the clear message to challenge unacceptable behaviour and say “it’s not ok”



# RRRS



## Wildern: A Rights Respecting School

**BECAUSE EVERY CHILD IN THE WORLD HAS ONE THING IN COMMON. THEIR RIGHTS.**

A Rights Respecting School is one in which the UNCR is placed at the heart of everything that happens. It is a school in which students learn that with rights, come the elements of respect and responsibility.

It is a School in which students and staff work together as a partnership, student voice is valued and plays a crucial role. It is important for students to be a part of a Rights Respecting School so that they can be fully aware of rights issues and become empowered global citizens in the wider world.

### What does being a Rights Respecting School look like at Wildern?



Prefects



Fairtrade



Our 'Respect' attribute



## Uniform 2023/24

*This uniform list outlines what we require students to wear. Uniform is incredibly important as it supports identity, helps us safeguard our students and is quality, hard-wearing and robust.*

*If you are unsure about any aspect of our school uniform please contact the school for clarification, we are happy to provide advice and guidance on what is acceptable for school and would rather have a conversation before things are bought!*

*Please remember that we have a large quantity of good quality pre loved uniform that can be accessed through our school uniform sales, look out for these in the Wildern Weekly!*

### **Jumper:**

Bottle Green V Neck Jumper with the School Logo.

School jumpers should be brought to school everyday. Hooded Jumpers (Hoodies), Hooded Zip Up tracksuit tops or cardigans are not permitted in school at all. Any other type of jumper is not permitted. These will be confiscated and available for collection at the end of the school day.

### **Trousers:**

Full length plain black trousers that are not rolled up. The trousers must be identifiable as trousers, with a fastening at the waistband for example a zip or button.

Leggings/Jeggings/Jeans/Tracksuit bottoms must not be worn in any circumstance as uniform.

### **Skirt:**

Tartan skirt in the Wildern colours available from SkoolKit. Skirts should not be rolled up at the waist and should be worn between mid thigh and the knee.

### **Shirts:**

A plain white shirt must be worn and tucked in at all times. The shirt must have a top button that is done up at all times. The shirt can be short or long sleeved. Branded short sleeve shirts may still be worn with a school tie. (These are no longer available to purchase from Skoolkit).

### **School tie:**

This is clip-on and available from Skoolkit or the school finance office. These must be worn at all times.

### **Socks/Tights.**

Socks can be plain white, grey or black. Tights must be plain black. Socks must not be worn over the top of tights or trousers and must be worn below the knee.

**Shoes:**

- Completely black (including branding/laces/soles)
- Leather/faux leather
- Polishable
- No heels or boots
- Shoes should have a closed toe

**Nails:**

Nail extensions are not allowed due to health and safety.

**Hair:**

Students with long hair should always carry hairbands. Long hair should be tied back for all subjects where practical activities take place. This includes Science/Technology/Art/Drama/Dance and PE.

**Jewellery:**

Any items of jewellery brought into school are the sole responsibility of the student. We do not recommend that jewellery is brought into school as any items worn would need to be removed for practical activities for health and safety reasons.

Should students choose to wear jewellery the following is allowed:

- Plain stud earrings (no hoops or drop earrings due to health and safety)
- Rings may be worn
- Clear retainers must be worn in facial piercings (these must be removed for practical activities)
- Bracelets may be worn
- Necklaces may be worn but must not be visible

**Coats:**

Coats must not be worn instead of a school jumper.

Coats should be suitable for all weather conditions and be identifiable as a coat. Fleece hooded tops/tracksuit tops/zip up hoodies/denim/leather jackets are not coats suitable for school. Coats that will help visibility in the dark would be advisable.

**Hats/Gloves:**

In cold weather, hats and gloves are advisable (not caps or bucket hats).

Extreme weather uniform adaptations:

In extreme weather conditions adaptations to the uniform will be made at the discretion of the school.

This may include:

- Removal of school tie
- Students wearing their PE kit to school
- School jumpers can remain at home
- Summer hats may be worn
- Additional layers of clothing to be worn under uniform (base layers)

## School Uniform (cont.)

### Physical Education and Dance

#### PE KIT



#### **Compulsory PE Kit**

(These items must be worn for all PE/Dance lessons)

Wildern PE shirt  
 Wildern PE shorts  
 Black sports leggings  
 Red sports socks / white trainer socks  
 Appropriate sports trainers

#### **Optional Extras**

(These items can be added to the compulsory kit for extra warmth/comfort)

Wildern PE tracksuit top  
 Wildern PE rugby shirt  
 Thermal mid-layers (skins, baselayers, vests)  
 Studded boots (for outdoor activities ONLY)  
 Gumshield (for hockey and rugby)  
 Shinpads (football, hockey and rugby)  
 Hat and gloves (for outdoor activities ONLY)

### Specialist Activity PE Kit

OUTDOOR PE: students are encouraged to bring a towel for all outdoor PE lessons

SWIMMING: dark coloured swimming shorts/one piece swimming costume and towel.

KS4 DANCE: black GCSE Dance T-shirt and plain black sports leggings or tracksuit bottoms

Plimsolls, Vans, Converse are not acceptable footwear

All students must have sports trainers, not fashion trainers

Students attending extra curricular sporting & dance activities will be expected to meet the same kit standards as detailed above for all sessions.



## PROHIBITED/BANNED ITEMS

- Knives and other weapons
- Drugs (other than prescription medication that is kept with first aid by arrangement)
- Drug paraphernalia
- Aerosol sprays
- Tippex and solvents
- Chewing gum
- Energy Drinks, including Lucozade, canned drinks
- Cigarettes, tobacco and other smoking paraphernalia
- E Cigarettes and vaping equipment
- Students are also advised not to bring cash or valuable possessions into school, as we cannot accept responsibility for loss or damage.
- Mobile Phones, iPads, MP3 Player, headphones and AirPods should not be visible. Such equipment, if brought into school, should be kept in the students' school bag. (If such equipment is used without permission or it is seen around the school site during break times and lunch times, it will be confiscated and if a repeat offence parents or carers will be required to collect the item from reception).

## Attendance

At Wildern, we expect all students to attend school regularly to take full advantage of the educational opportunities available to them. Regular school attendance and educational attainment are inextricably linked.



Good attendance and punctuality is vital in order for your child to achieve their potential. We expect all students to aspire to achieve 100% attendance and appreciate the full support of parents and carers in encouraging this. Parents can check their child's attendance through the Insight App.

There will be occasions when your child is unable to attend school. This could be due to poor health or an exceptional circumstance that means absence is unavoidable. It is important you contact the school on each day your child is absent so we can track attendance and support where necessary. Exceptional leave of absence can be granted with the permission of the Headteacher following completion of the appropriate form. This can be found on our website.

If your child's absence becomes a concern, then we will do all we can to support you in improving their attendance. This may involve school based support but if absence continues to be a concern, we will seek the support of the local authorities' attendance support team to help us with strategies to help re-engage or seek other professionals help such as the school nursing team.

  
**Punctuality is also very important**

**Lost minutes = Lost learning**



Please report any absence due to illness via [absence@wildern.org](mailto:absence@wildern.org) or through the 'Report Absence@' feature on the Insight App under attendance.



## Contacting the school

We will be pleased to discuss any student's conduct or progress at any time. Parents are welcome to make contact with us as soon as any concern arises.

<b><u>Main Reception</u></b> To report absences and for all other enquiries	01489 783473 <a href="mailto:absence@wildern.org">absence@wildern.org</a>
<b><u>Student Services</u></b>	01489 779 494
<b><u>Email</u></b> All emails will be forwarded to relevant parties	<a href="mailto:wildern@wildern.org">wildern@wildern.org</a>
First Aid Room:	01489 779445
D@rt:	01489 779471
Leisure Centre:	01489 787128

### There are several possibilities:

1. If a particular subject concerns you, write via letter/email or in the student planner (your child should then show their class teacher your message) or telephone to ask for the teacher to contact you and talk over the matter when convenient.
2. If your concern is more general or one of a social matter, write/ telephone/ use student planner to ask the Tutor to contact you to arrange a time to talk the matter over.
3. You may want to email the school if you wish to communicate with the tutor or a subject teacher. You can do this by using the following address: [wildern@wildern.org](mailto:wildern@wildern.org). This email will be forwarded to the person best placed to deal with your question.
4. If you have a more serious concern or issue to raise you may like to contact Students Services who will deal with any initial concerns and then liaise with the Director of Progress and Achievement (DoPA).
5. If for any reason you wish to talk to a Senior Member of Staff, contact the school either by telephone/ email/letter and a Senior Teacher will arrange to see you as soon as possible and, in an emergency, at very short notice.
6. The CEO/Headteacher are always pleased to meet with parents. Should you find that after contact with other staff your concern remains, please contact either. We are all concerned with helping individuals.
7. Please note that the school will always endeavour to return telephone calls or email within 24 hours, and we will respond in writing as required within five to ten working days.
8. Please be mindful of our guidance for communicating with school, found on the website - <https://www.wildern.org/joining-us/contact-us/>

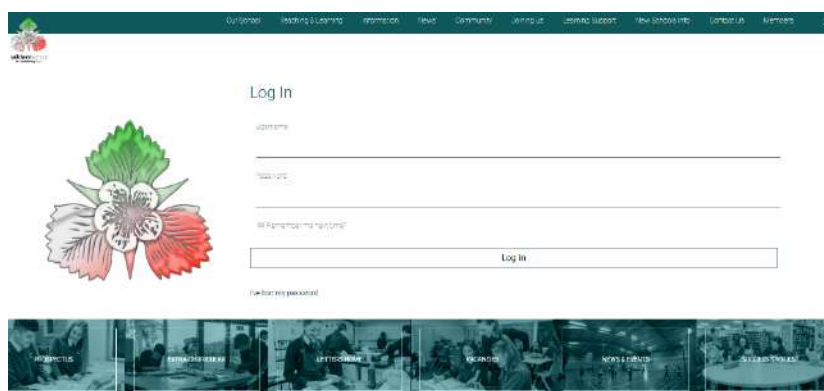
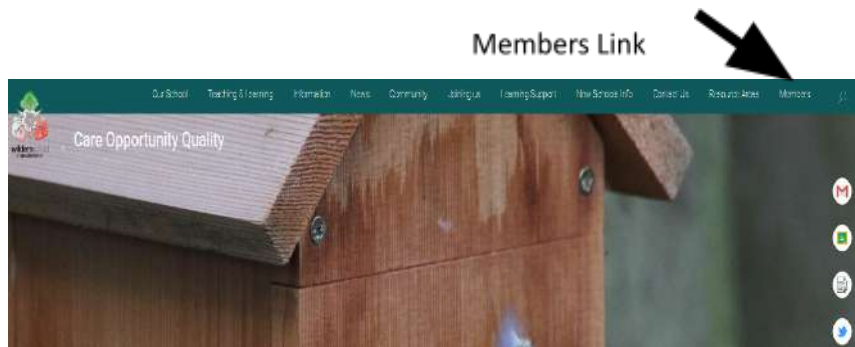
## Member Login Area of School Website

Students and Parents can login to the members' area of the school website by clicking on Member in the top right corner

Parents can login using the

Username **"parents"**

and Password **"wildern"**

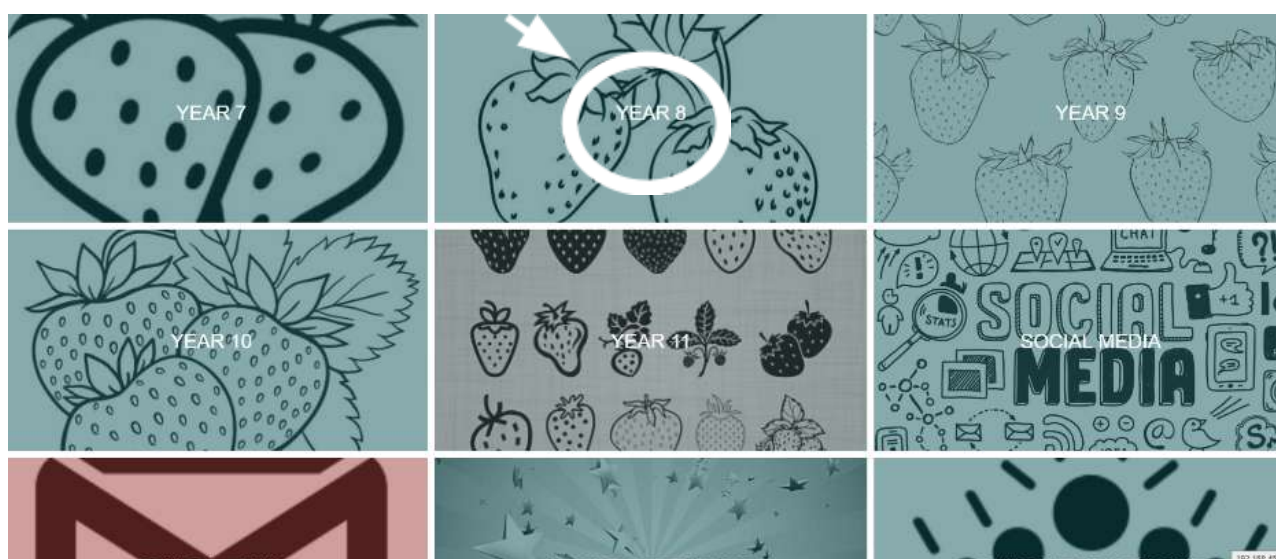


Students can login using the

Username **"student"**

and Password **"school"**

You will then find a useful grid to link you to the resources you require. Each grid has information specifically for that year group. Year 8 parents need to click on the grid that says Year 8. Inside it will open up to show you all the resources and information to support your child in Year 8. Click back to return to the previous page or use the search bar at the top of the website to find pages you are looking for.



## Key Dates

All dates are correct at the time of sending

### Term dates

### Inset Days

Friday 1 September 2023  
Friday 13 October 2023  
Friday 24 November 2023  
Monday 19 February 2024  
Monday 24 June 2024



**WAD dates** - More information about WAD is on pg 62

Week beginning 15 January 2024	WAD 1
Week beginning 1 July 2024	WAD 2 This will include subject exam results in steps

### Other key dates

Thursday 1 February 2024	Year 8 Parents' Evening
Week beginning 13 May 2024	Year 8 Exams

### Parent information evening dates

Parent information evening events are held to inform, guide and support parents with the upcoming year that their child is experiencing. These sessions include issues that affect children of a specific age and learning opportunities to support the learned curriculum. The dates for 2023/24 are:

Love Languages	Thursday 16th November 2023
CAMHS	Thursday 7th December 2023
The effective use of Edtech to support learning	Thursday 14th December 2023
Pathways Evening	Thursday 18th January 2024
Supporting your teenager	Thursday 29th February 2024
How to support your child's reading	Thursday 14th March 2024
Chromebooks	Thursday 2nd May 2024
Relationships and Sex education (RSE) and Education for life	Thursday 9th May 2024
E-Safety	Thursday 16th May 2024
Stretch and Challenge	Thursday 6th June 2024
Healthy Eating/Affordable Nutritious Meals	Thursday 20th June 2024

## Student Services

### Who are they?

The Student Services team is a support and intervention team who are skilled in offering staff, students and parents the support to ensure our students succeed in school.

### The Student Services team

#### Their aim is to:

- Respond to any immediate concerns parents and carers may have
- Liaise with year staff and teachers as necessary
- Follow up any concerns and keep parents/carers informed of progress
- Track and monitor attendance, punctuality
- Work with parents to help them support their children
- Provide bespoke interventions to support students in behaviour, well-being and health
- Work with staff to safeguard and support students
- Work closely with outside agencies to provide support 'beyond our walls'.
- Support students with their mental health and well being

	
<b>Mr G Bateman</b>	<b>Miss S Cooper</b>
	
<b>Miss B Cooper</b>	<b>Ms L Duck</b>
	
<b>Miss B Budden</b>	<b>Miss K Langdown</b>

### How does Student Services work?

They deal with enquiries and act as a liaison between the Director of Progress and Achievement (DOPA), tutors and staff e.g. a friendship issue, mental health and wellbeing, truancy concerns, and detention matters.

Incidents will always involve the DOPA, this service is to support their work and offer a first point of contact prior to their involvement should the tutor not be able to help.

Parents can phone Student Services on 01489 779494 if they have any pastoral concerns. These may include concerns for wellbeing, attendance or social and emotional concerns. The tutor should always be the first port of call and the DOPA still has overall responsibility for the year group.

## First Aid

It is not uncommon for some children to become unwell, or be involved in a minor accident which requires some first aid while at school. The school has a first aid room which is administered by qualified first aiders during the school day. All students are made aware of this facility and can access this if required. If a student is unable to return to lessons after visiting the first aid room, the first aider will try to make contact with parents/guardians to arrange for the student to be collected from school. If the emergency services are required, the first aider, or another member of staff in her absence will accompany the student until parents or guardians arrive.

Following the completion of a health form prior to starting at Wildern, it is essential that the school is kept informed of any changes to a student's medical circumstance so that our records remain up to date. Parents/Guardians of children with conditions that staff need to be aware of from the first day of admission e.g nut allergies, are asked to give details to the first aider to agree procedures in the case of an emergency.

If a student has medical needs that require managing in school or that are severe or complex, the first aider will contact the parents to create a Health Care Plan.

Regular vaccinations are carried out at school by the South West Hants Immunisation Team. Parents/guardians are informed of these in advance and consent forms will be sent out by email.

### **Allergies**

There are students and staff within Wildern School that have severe food allergies to peanuts and nuts. It is important that there is a strict avoidance in order to prevent a life-threatening allergic reaction. To reduce the chance of this occurring we ask where practically possible, you do not send your child with peanut or nut containing products to school or on school trips. We appreciate your support with these procedures.

## E-Safety



It is essential that students' safety is paramount when using ICT. Therefore, during students ICT lessons the relevant member of staff will give presentations about internet safety, email etc.

Our system allows us to block unsolicited mail as well as filter all inappropriate sites/language. Students will be strongly reminded never to contact an unknown person via the Internet. They will not be allowed to use their email address for frivolous messages, messages which discriminate against another person on any grounds whatsoever, or those which use inappropriate language. Email will be immediately withdrawn if this happens.

Wildern is providing the use of email for the electronic transfer of information for all students between home and school. As a school we wish to encourage students to learn independently in this way. All students regularly receive updates on the latest e-safety advice and it is also on our website [here](#). The School wifi and network traffic is continuously monitored. Alerts will be triggered for sites open on devices connecting to the wifi network.

## Wildern as a Community School

As a school we are very proud of the partnerships that we have developed and the relationships we have forged with our community.

### Students within the community

We expect students to uphold our school values both to and from school, when in school uniform and when they are in the community. The school works closely with organisations and retailers locally and regularly communicate so that we can support each other when students get it wrong and celebrate when they get it right.

We want your child's start in Year 7 to be a productive, successful and happy one. It is a fantastic time in their education and one where they should flourish and develop their skills and personality.

There are so many ways that your child can support the local community throughout the year, please keep an eye on all school communication to see how they can get involved!



### Car Parking

Please can we remind all parents that to ensure the safety and safe exit of our students, parents should wait outside of the school gate to collect their child at the end of the day as cars are not allowed on site between 2.45pm and 3.15pm.

Alternatively, parents may want to take advantage of free parking facilities at Turnpike Way Recreation ground or B&Q in Hedge End who have kindly agreed to the use of their car park as an additional overspill option. Please do not park in the lane opposite the school or across our neighbours driveways.

### Students on site after hours

Students should not be on the school site after hours unless:

- They are invited by school staff to be there
- They are attending an organised school or community event
- They are using, through paid admission, any of the school's facilities

### Community Police Officers

Please do not be alarmed if you see these Police Officers around the school site or outside of school. As part of our local community partnership these Police Officers will be working in collaboration with all schools to develop relationships with young people within the local area. We regularly meet with our local policing team to ensure that we are doing all we can to support students with regard to being safe and being good role models in the community.

### Smoking and vaping

The school site is a no smoking site, this includes vaping and e cigarettes. Smoking therefore should not take place anywhere around the site including the school field.

**QUALITY** 

**“Quality means doing it right when no one is looking.”  
— Henry Ford**

## The Wildern Way

Wildern School is built on the three key pillars of the Multi Academy Trust words; CARE, OPPORTUNITY and QUALITY and believes that *'Every Student Matters, Every Moment Counts'*. We are a comprehensive school in the heart of our community and are very proud of the relationships we have with our students, parents and local residents. We believe passionately in quality education for all and the significant part we play in ensuring this both within our own community and beyond.

The three stated academy aims for Wildern School are:

- To enhance the opportunities and successes enjoyed by all present and future students and staff
- To develop further the school's track record of contributing to school improvement, innovation and transformation both within the school, locally within our immediate family of schools and for the wider system as a whole
- To develop further the schools wider community role and our contribution to opportunities for our stakeholders in our immediate community, particularly in the arts and sport

We take pride in our excellent record of academic success and the opportunities that we offer our students both through the curriculum and our extensive extra-curricular activities. We continue to perform well above the national average.

We strive to ensure that all students achieve their full potential through a clear focus on learning and achievement in a supportive environment. We are proud of the fact that we know every student as an individual and challenge and stimulate them regardless of ability so that they can all achieve within a happy and secure environment.

We especially value our collaboration with parents, ensuring that this partnership is to the benefit of your child.

Wildern is a successful school that is proud of its students' achievements whether they are academic, sporting, artistic or dramatic. We provide a curriculum that is both broad and balanced, and one that has received national recognition for its quality.





# Our Curriculum

## Curriculum Vision

At Wildern our aim is to offer all students access to a broad, balanced, relevant and challenging curriculum, which prepares them for the opportunities, responsibilities and experiences of adult life.

The curriculum enables our students to:

- Develop their knowledge, skills and understanding
- Appreciate human achievement
- Gain understanding of social, economic and political issues
- Be aware of the spiritual and aesthetic dimensions of life
- Develop attitudes, values and beliefs that are reasoned and acceptable within society
- Develop independence of learning fostering skills and attributes for lifelong learning
- Be aware of their own health and safety and to appreciate the benefits and risks of the choices they make
- Prepare for life in Modern Britain. Our curriculum promotes the fundamental British values of democracy, the rule of law, individual liberty and mutual respect for and tolerance of those with different faiths and beliefs and those without faiths

We are committed to giving students opportunities to achieve and experience success; establish sound constructive relationships; to develop a sense of responsibility for their actions and to share a concern for their own environment and the world as a whole.

The curriculum is seen as a 5-year journey.

## The importance of Key Stage 3

Key Stage Three (KS3) is the bridge between the knowledge and skills students have developed at Key Stage Two, and the knowledge and skills we want our students to have to prepare them for Key Stage Four. In KS3, students study a wide variety of subjects, allowing them to explore and engage with a rich quality of education across all aspects of the curriculum.

Throughout Years 7 and 8, students follow a progressive curriculum, which is built around the principles of knowledge, skills and passion. The KS3 curriculum will prepare students for the next stage in their learning journey by making them the readers, writers and thinkers we want them to be. Regular opportunities are built in for students to activate prior knowledge, whilst adding complexity, to ensure students can see how each Key Stage builds on each other; helping students to make connections between, and use the knowledge and skills previously learnt and understand how they expand on it. Each curriculum area has thoughtful, sequenced learning journeys which not only build on prior knowledge, but allows students to apply it to different contexts.

**Every Child Matters:** Challenge and curiosity throughout Key Stage three ensures the curriculum is ambitious for all. Adaptive teaching strategies and timely interventions both in and out of the classroom ensure no one is left behind. The Tutor programme, together with subject curriculums, including MSS, provide opportunities for students to develop the skills needed to be resilient, life long learners. We adopt a holistic approach, building on opportunities to develop the whole child.

**Every Opportunity Counts:** Regular opportunities to test what students know and can do through formative and summative assessment methods. Self study, and timely, effective feedback provides every

student the opportunity to grow as learners, developing metacognitive skills of self regulation, and the ability to become independent, resilient learners.

The breadth of subjects studied and topics within subjects, alongside our extensive offer of extra curricular activities, including trips, strengthens students' cultural references to ensure they are able to make real connections and understand the world around them.

### **Practice**

- Students follow a 2 year Key Stage Three
- Evidence informed practice underpins planning to aid student memory, for example interleaving, low stakes quizzing
- Sequenced curriculum maps in every subject area
- Regular self study set in each subject area
- High number of evidence informed formative assessment opportunities, such as low stakes quizzing, live feedback and verbal feedback
- Calendared exam slots for summative assessment
- Thinking hard strategies

### **Key Stage 4**

In KS4, students choose a selection of subjects to specialise in, having more time to study to a deeper level the subjects they enjoy and have a passion for. This includes the option to study new subjects which are linked to GCSE opportunities that were not included discreetly at KS3.

The quality of education designed for KS4 study builds on KS3, extending, enriching and deepening understanding, knowledge and skills. KS4 courses will ensure that the Specifications for GCSE courses are delivered, with the opportunity to follow lines of enquiries as a response to student questions, enabling learning around the subject and to a greater depth. Further information about this and the pathways process is given in Year 8, to support students in making these choices.

## The Pathways Process

During Year 8, students make important steps within their educational journey by choosing what areas they are going to specialise in during their KS4 venture. This pathways process initially begins with the PLRs where students are invited to set targets for themselves to investigate further what areas of study they may be interested in. Students and parents will then be fully involved with an extensive pathways process to help inform, engage, excite and inspire our students to select a personalised suite of subjects that will be studied at a deeper level during KS4.

### Key Dates

Yr 8 Pathways Evening - 25 January 2024

Yr 8 Parents Evening - 1 February 2024

Pathways Assemblies - Week Commencing 20 February 2024

Pathways Taster Lessons - Fortnight Commencing 26 February 2024

Pathway Forms Submission - 20 March 2023

Confirmation of Pathway Choices - Mid June 2023

## Teaching and Learning

Teaching and Learning is what Wildern is all about; it is our primary job and is integral to the work that we do every day. Every member of staff is encouraged to be part of our Professional Learning Groups (PLG's) who research pedagogy, trial its usefulness and embed its practices to ensure that we stay at the forefront of educational thinking, innovation and enquiry.

We believe that students learn best when they:

- Enjoy their learning
- Are interested, motivated and engaged
- Achieve success and gain recognition
- Are given tasks which match their ability
- Clearly understand the learning objectives, content and expectations for lessons
- Are confident, feel secure and are aware of boundaries
- Are challenged and stimulated
- Are involved in their own learning and are encouraged to think about new ideas and ask questions
- Are encouraged to extend their classroom learning during study time at home
- Are encouraged to develop their analysis and thinking skills
- Are involved in evaluating their own and others' progress (AfL)
- Know their level of performance, understand the assessment criteria and can see themselves progressing, knowing how to improve

We know excellent teaching is achieved when:

- Students are challenged with work appropriate to their ability
- Lessons are well planned and resourced to engage all students
- Assessment for Learning is taking place including peer/self-assessment
- Teachers are seen as energetic and enthusiastic for their subject and have good subject knowledge
- Learning objectives are shared and discussed with the class at the start of the lesson
- The lesson consists of a variety of bite size activities using a range of learning styles
- Plenaries are well structured, involve the students and re-cap on the learning objectives of the lesson
- Students are supported to improve their work with formative comments
- ICT is used to enhance and enrich the quality of teaching
- The teaching style is varied and acknowledges variations in learning styles, maximising student engagement and enquiry
- Students are motivated to behave well within a consistent behaviour management framework
- Student progress is tracked, monitored and reviewed regularly
- Assessment is used to inform planning, teaching and progress
- Students are encouraged to think about their ideas and ask questions

We believe that our classrooms cultivate these ideals in order that students acquire the essential study skills, love of learning and resilience required for life after Wildern.

## Class Codes

There are 25 lessons each week. Each lesson lasts for 1 hour. In Year 8, students will study the following subjects:

<b>Subject</b>	<b>Code</b>	<b>Lessons</b>
Art	Ar	2
Drama	Dr	2
Dance	Da	1
English	En	7
Geography	Ge	3
History	Hi	3
Information Studies (ICT)	It	2
Maths	Ma	8
Modern Foreign Language (MFL) (Students study 1 MFL subject) French German or Spanish	Fr Gm SP	5
Education for Life	EL	1
Music	Mu	2
Physical Education	Pe	4
Religious Education	Re	2
Science	Sc	6
Technology including Design & Technology and Food and Nutrition	De Fd	2



The School ethos is 'no bottom set' and most subjects are taught in mixed ability classes. Some subjects have higher and foundation tiers at GCSE so have broadly set groups throughout Key Stage 3 (Maths and Science).

The class codes take the form of; Year, Population, Subject, Class. A Year 8 student in the X population in English class number 3 would have the class code 8xEn3. In Year 8 there are 4 populations V, W, X, Y.

## Self-study

Self-study at KS3 is set frequently with a weekly or fortnightly deadline. Tasks should take a student up to 30 minutes to complete per subject area. The emphasis should be on the quality of the response and not the amount completed.

Listed are some examples of potential self-study tasks at KS3:

- Google Quiz / Kahoot
- Vocabulary learning
- Extended reading with comprehension questions
- Quizlet
- Worksheet
- Practice papers (Self marking)

Self-study tasks will usually involve self-reflection or peer feedback to enable students to make improvements. This may be conducted in a variety of ways by the class teacher.

We believe that completing work outside lessons helps students in a number of ways:-

- It develops the Wildern Attributes and study habits.
- It teaches the importance of deadlines and consolidates and extends classroom learning.
- It encourages an enquiring mind.
- It affords the opportunity for enrichment.
- It ensures opportunities to practise and consolidate new skills.
- It enables students to think critically and creatively.
- The impact of self-study on learning is consistently positive (leading to on average five months' additional progress).

If a project is set over a period of weeks then the subject teachers should provide a clear outline of what is expected for each task and a way of checking in stages that the work is being completed. (E.g. flyer outlining criteria for each task and ticked off when completed)

## How can I support my child's learning?

There are numerous ways you can support your child: ensuring they are wearing the correct uniform, and that they turn up on time at the start of the day, being aware of their self-study schedule and many others. Sometimes it's hard to know where to start if you want to get more involved – so here is a list of things you might like to try.

### INSTEAD OF ASKING:

“How was school today?” (because they will say either “fine” or “okay”)

### YOU COULD ASK:

“What was the best lesson today?” and “why?”

“What new thing did you find out today?” Ask them to explain it to you.

“What did you struggle with today?” Ask them how they will deal with that.

“What are you most proud of today?” Ask if you can see the work.

One of the best ways of learning something is to explain it to someone else, so look at a subject book, find a recent page and ask them.....

“What is this?” “What does this mean?” “Who is this about?” “How did you get that result?”

Consider social factors, especially during transition when students first join us. *Rising hormones, friendship issues, exam pressure, behaviour and bullying all impact on our children at one time or another and it can affect their learning, so you need to know what’s bothering them.*

“How are you feeling today?”

“Did you manage to sort out.....?”

“Did you struggle with anything today?” “Does that bother you?”

Discuss with your child the best time for them to study each day. There are many valuable learning experiences outside the school day that should be planned for and included when organising study time.

Help your child to devise a timetable that suits their individual needs and check that their Self-study is in the schoolbag on the morning the self-study is due.

Talk to students about their self-study. You could ask:

“Have you done this self-study?” or “What is the most urgent piece of self-study you have to do and when will you do it?”

- Encourage your child to work in a quiet, comfortable place at a regular time each day.
- Encourage your child to see self-study as an extension of the lesson and not leave doing it until the night before it is due in.
- Sign up to Google Guardians to receive summaries of the self-study that is set as well as telling you when it is due in, if it has been handed in or if it was not completed
- Discuss the work with your child; do they understand the task? Can they extend and improve their answers?
- Encourage your son/daughter to work to the time allocation set for each subject.
- Refer your son/daughter to Google Classroom, school library or your local library.
- Remember to write a note in the planner if your child has a genuine reason for not completing the Self-study.
- Contact the tutor if you have any concerns about Self-study.
- Your child may receive additional work from the Learning Support department. Try to agree a regular time to help your child with these tasks.
- During exam sessions, ensure that your child has created a revision timetable that can help to plan effective revision.

Example of a self-organised Self-study timetable:

Day	Subject/activity	Subject/activity	Subject/activity
Monday	Stables 3.15	Maths	Art
Tuesday	English 3.30	Music lesson 5.30	Dance
Wednesday	Stables 3.15	Science	Drama
Thursday	Geography	Music	Youth Club 7.00
Friday	RE	MFL	ICT
Saturday	Stables 10.00	Football 2.00	
Sunday		Technology	History

Please don't be afraid to ask the school for help – we have a range of qualified staff to offer that extra emotional support, practical help or counselling. In the first instance, you should approach your child's tutor or a member of the Student Services Team, they will be more than happy to help you and your child to put things right.

If you would like specific subject support, you should contact your **child's subject teacher in the first instance.**

Curriculum Teams			
English	Mrs B Rooney	Design Technology	Mr J Smith
Maths	Mr W Sleeman	Creative Arts	Mrs H Duncombe
Science	Mrs D Penney	PE	Mr B Wainwright
Languages	Mr T Russell	Communication Studies	Mrs N Anderson
Humanities	Mrs E Dixon		

Information about the curriculum studied throughout Year 8 is on the following pages. There are also some suggestions for ways to enrich your child's learning at home for each subject.



# The Curriculum – Subjects

**Department:** ART

**Periods per fortnight** 2

**Class Organisation:** **Mixed Ability**

**Course Overview:**

Students will embed a number of key skills, knowledge and understanding through 2 main projects and a series of GCSE style taster lessons. Projects include; A Still Life project, the Landscape Assessment project and GCSE art taster lessons; including experimentation with printmaking, drawing and using new technologies.

**How students will be assessed**

Students will be assessed with Wildern Steps throughout the year, through a final extended Assessment Landscape Project and through a 1 hour written exam.

**Self-study**

Each project will have the following tasks, available as printouts and via Google Classroom:

Task 1: Artist Research Poster

Task 2: Drawing / Photography from real life

Task 3: Google Classroom Quiz

Task 4: Developing techniques / exploring materials

**Parental support**

- Monitor and support your child with completing the self-study tasks,
- Ensure your child has correct and required art equipment, including a glue stick, art shirt and basic art pack

**Enrichment Ideas**

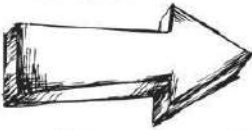
<p style="text-align: center;"><b><u>Suggested reading</u></b></p> <ul style="list-style-type: none"> <li>● Da Vinci Code</li> <li>● Wildness and Wonder by Susan Goldman Rubin</li> <li>● Georgia Rises by Kathryn Lasky</li> </ul>	<p style="text-align: center;"><b><u>Films &amp; documentaries</u></b></p> <ul style="list-style-type: none"> <li>● Sky Arts</li> <li>● Sky Landscape / Portrait artists of the year</li> <li>● Nate: Artrageous</li> </ul>
<p style="text-align: center;"><b><u>Cultural experiences</u></b></p> <ul style="list-style-type: none"> <li>● Art Galleries - there are plenty of local ones</li> <li>● Talk to your child about art and about their artwork, create time for a discussion or to share thoughts</li> <li>● Have a balance of screen time</li> </ul>	<p style="text-align: center;"><b><u>Things to see and do locally</u></b></p> <ul style="list-style-type: none"> <li>● Wildern D@rt centre</li> <li>● Southampton City Art Gallery</li> <li>● John Hansard Gallery / city eye Hobby Craft workshops / WSA shop and gallery</li> <li>● Today @ Apple</li> </ul>
<p style="text-align: center;"><b><u>Top 5 Websites</u></b></p> <ul style="list-style-type: none"> <li>● <a href="https://www.tate.org.uk/">https://www.tate.org.uk/</a></li> <li>● <a href="https://www.southamptoncityartgallery.com/">https://www.southamptoncityartgallery.com/</a></li> <li>● <a href="https://www.canva.com/">https://www.canva.com/</a></li> <li>● <a href="https://sketch.io/sketchpad/">https://sketch.io/sketchpad/</a></li> <li>● <a href="http://www.artlex.com/">http://www.artlex.com/</a></li> </ul>	<p style="text-align: center;"><b><u>Things we do</u></b></p> <ul style="list-style-type: none"> <li>● Art Club / Join the Art Enrichment Google Classroom</li> <li>● Art competitions / Photography Competitions</li> </ul>



wildernschool

# ART

department



## Art & Photography Learning Journey

A04



Your Future starts HERE

Mission - Attend the Year 11 Leavers' Prom

Your final place will be shown in the GCSE gallery



Apply for your collage place



GCSE KSA



Summer Term House Photography Comp



Check your knowledge with a quiz



Art & Photography Course



Year 9



What Wildern Step are you?



Act about being an Art student Evaluator



Become an Art Expert!



Reflect on your outcomes - what can you do to improve?



Introduction to Art rooms: Health and safety

Sit your final hour exam

**A01**

**Assessment Objective 1 Critical Understanding & Investigations**  
Devise your ideas through investigations demonstrating critical understanding of art.

**ART**

**A02**

**Assessment Objective 2 Refine, Explore and Experiment**  
Refine work by exploring ideas, selecting and experimenting with appropriate media, techniques and processes.

**ART**

**A03**

**Assessment Objective 3 Observational Studies & Ideas**  
Develop ideas, observations and insights relevant to your intentions as work progresses.

**ART**

**A04**

**Assessment Objective 4 Realising Intentions**  
Present a personal, informed and meaningful response that realises intentions and demonstrates understanding of visual language.

**ART**

# ART

**Final Exam**

**ART**

Final exam paper handed out



Complete your Personal Learning Checklist and Hand in your NEA coursework

Complete Y11 Practice exam

Practice Makes Perfect

Year 11

Year 10

**10**

**ART**

Attend college taster days

TOP TIPS

Act on the feedback and tips from your teacher

Start NEA Visual Language

Start NEA SIP Theme based

Make sure you have your equipment - you can buy an Art Pack in 9/10



Attend ESPS and Drop ins



Summer Term House Photography Comp



Take lots of Photographs to support your work



Be inspired! Watch Portrait Artist - SKY ARTS



Be inspired! Watch Landscape Artist - SKY ARTS



Be inspired! Visit an art gallery or read a book.



Try New Techs to create artwork like Hockney



Attend Pathways Evening for GCSEs



Complete your GCSE Pathways form



Van Gogh & Seurat Painted Garden



Be inspired! Watch the great Pottery Throw down



CHALLENGE

Girl with a Pearl Earring



Enter the School Christmas card competition



Expert with materials and techniques



You will start to understand the context of artwork and how and why artists make artwork



Be independent and read art fiction books!



Keys Project



Baseline Assessments what do you already know? What are your skills?



Year 8

KS3

Welcome to the Art Department

Year 7

Your first Y7 Art lesson - you will be given a lovely sketchbook



Department: **COMPUTING**

Periods per fortnight **2**

Class Organisation: **Mixed Ability**

**Course Overview:**

Students will develop and embed digital literacy by covering a variety of topics including programming, augmented reality, spreadsheets and digital products. We aim to provide students with transferable skills in computing that can be used moving forward into Year 9 and beyond

**How students will be assessed**

- End of unit formal teacher assessment

**Self-study**

- Self-study via Google Classroom
- Autumn term: Unit 6 self-study
- Spring term: Unit 7 and Unit 8 self-study
- Summer term: Unit 9 self-study

**Parental support**

- Checking self-study regularly
- Encourage use of computing at home.

**Enrichment Ideas**

<p style="text-align: center;"><b>Suggested reading</b></p> <ul style="list-style-type: none"><li>● Coding for Beginners: Using Python by Louie Stowell</li><li>● Coding Games in Python (Computer Coding for Kids) by DK</li></ul>	<p style="text-align: center;"><b>Films &amp; documentaries</b></p> <ul style="list-style-type: none"><li>● <a href="#">BBC Teach - computer science playlist - Youtube</a></li><li>● Ask the Storybots - How do computers work?</li></ul>
<p style="text-align: center;"><b>Cultural experiences</b></p> <ul style="list-style-type: none"><li>● The National Museum of Computing <a href="https://www.tnmoc.org/">https://www.tnmoc.org/</a></li><li>● Learn a new programming language</li></ul>	<p style="text-align: center;"><b>Things to see and do locally</b></p> <ul style="list-style-type: none"><li>● Game Over: Video Game cafe Portsmouth</li><li>● IBM Hursley Museum <a href="https://slx-online.biz/hursley/the_museum.asp">https://slx-online.biz/hursley/the_museum.asp</a></li></ul>
<p style="text-align: center;"><b>Top 5 Websites</b></p> <ul style="list-style-type: none"><li>● BBC Bitesize KS3 ICT</li><li>● <a href="https://hourofcode.com/uk/learn">https://hourofcode.com/uk/learn</a></li><li>● <a href="https://lightbot.com/flash.html">https://lightbot.com/flash.html</a></li><li>● <a href="https://scratch.mit.edu">https://scratch.mit.edu</a></li><li>● <a href="https://repl.it/">https://repl.it/</a></li></ul>	<p style="text-align: center;"><b>Things we do</b></p> <ul style="list-style-type: none"><li>● E Safety focus group</li><li>● IBM for Y8 Girls</li><li>● IBM trip</li></ul>

"The similarities between humans and computers are more numerous than the differences." P.A Scott

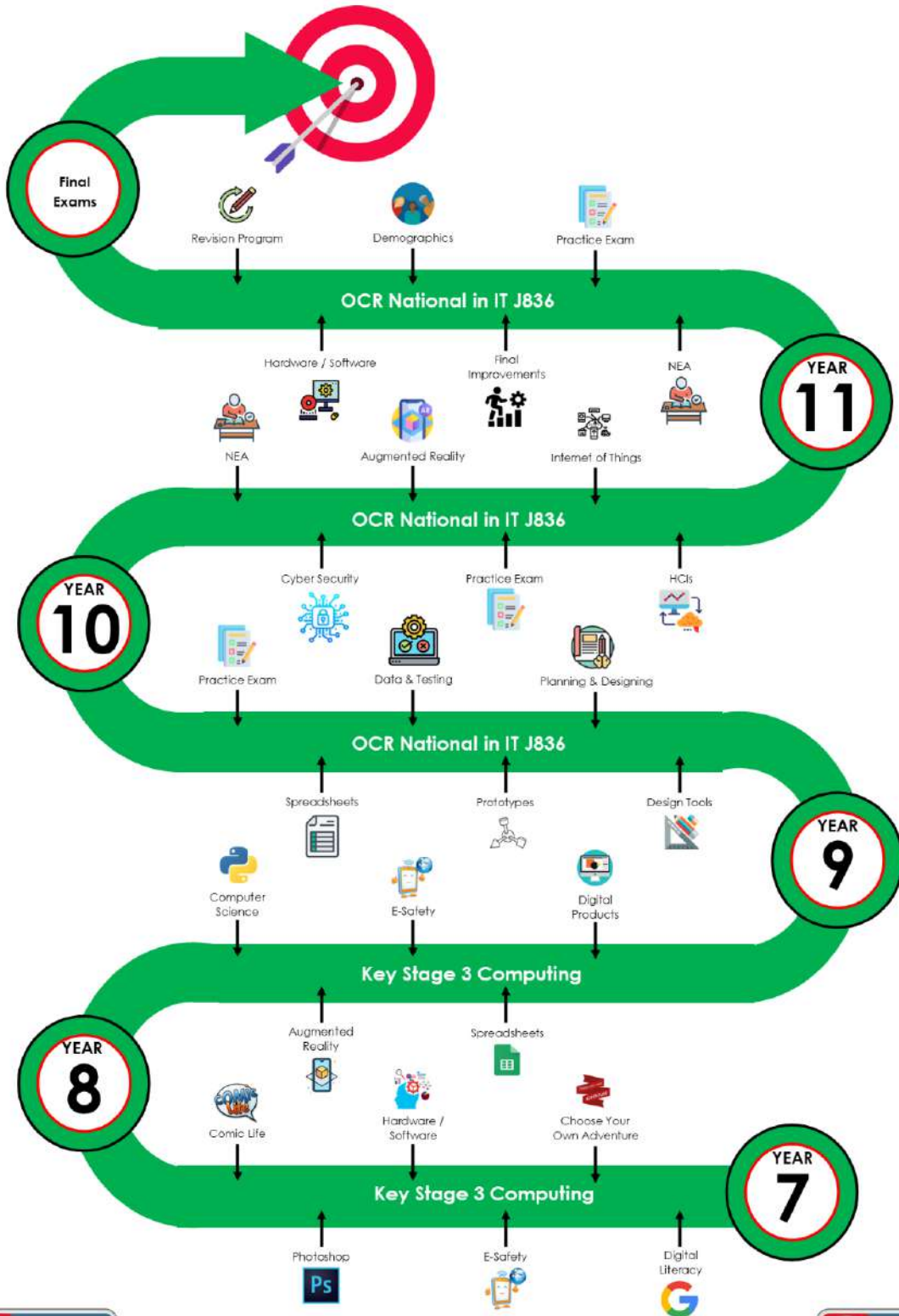


# WILDERN ICT LEARNING JOURNEY



"Education is the passport to the future, for tomorrow belongs to those who prepare for it today." Malcolm X

"A teacher can open the door, but you must enter it yourself." Chinese Proverb



"Computers themselves, and software yet to be developed, will revolutionize the way we learn." Steve Jobs

Department: **DANCE**

Periods per fortnight **1**

Class Organisation: **Mixed Ability**

**Course Overview:**

Autumn Term: Capoeira and Poetry through Dance

Spring Term: The Car Man – Matthew Bourne

Summer Term: GCSE Professional Dance Works: Emancipation of Expressionism

**How students will be assessed**

Students are assessed through the Wildern Steps on their practical work in three areas, composition, performance and analysis, both continually and at the end of each unit.

Year 8 exam – students will be assessed on their dance vocabulary and key terms in a written paper. This will focus on choreographic skills, performance skills, safe practice and analysis.

**Self-study**

Spring Term - Evaluative writing analysing and reflecting on 'The Carman' by Matthew Bourne.

**Parental support**

- Encourage their child to watch live and recorded dance in a variety of styles.
- Ensure their child wears the appropriate kit and has equipment for all lessons.
- Dance kit – green shorts and Wildern polo shirt.

**Enrichment Ideas**

<p style="text-align: center;"><b><u>Suggested reading</u></b></p> <ul style="list-style-type: none"><li>● Ballet Stars</li><li>● Rambert Dance</li></ul>	<p style="text-align: center;"><b><u>Films &amp; documentaries</u></b></p> <ul style="list-style-type: none"><li>● Matthew Bourne dance pieces</li><li>● Emancipation of Expressionism - Anthology</li></ul>
<p style="text-align: center;"><b><u>Cultural experiences</u></b></p> <ul style="list-style-type: none"><li>● Theatre visits. The Berry, Mayflower, Nuffield, London, Sadlers Wells</li><li>● Performing as a part of the dance extra curricular programme in the Berry Theatre</li></ul>	<p style="text-align: center;"><b><u>Things to see and do locally</u></b></p> <ul style="list-style-type: none"><li>● Dance clubs at school</li><li>● D@rt Centre dancer activities</li><li>● The Point Theatre</li><li>● The Berry Theatre</li><li>● The Mayflower Theatre</li></ul>
<p style="text-align: center;"><b><u>Top Websites</u></b></p> <ul style="list-style-type: none"><li>● Capoeira - <a href="https://youtu.be/Z8xxgFpK-NM">https://youtu.be/Z8xxgFpK-NM</a></li><li>● The Car Man - <a href="https://new-adventures.net/the-car-man#overview">https://new-adventures.net/the-car-man#overview</a></li><li>● Brothers of dance: Contemporary - <a href="https://youtu.be/KEAkyBd6a-Y">https://youtu.be/KEAkyBd6a-Y</a></li><li>● Emancipation of Expressionism Video - <a href="https://www.youtube.com/watch?v=nUQl8kUiaiE">https://www.youtube.com/watch?v=nUQl8kUiaiE</a></li></ul>	<p style="text-align: center;"><b><u>Things we do</u></b></p> <ul style="list-style-type: none"><li>● Year 8 dance club</li><li>● The Unheard Boys Dance Company</li><li>● Junior bare roots (by invite only)</li><li>● Showcases x3 in the Berry Theatre</li><li>● Dance Live!</li></ul>

# YEAR 7-11 DANCE



**Department:** DESIGN & TECHNOLOGY

**Periods per fortnight** 2

**Class Organisation:** **Mixed Ability**

**Course Overview:**

Students take part in the following projects: Pull along Toy, USB lamp, Emoji toy and Food Kitchen Safety, Diet and Health. Students learn valuable skills and techniques which could be used in Year 9.

**How students will be assessed**

Students are assessed throughout the projects and given a Wildern Step for practical and design work.

**Self-study**

Self-study is given at least once every term. Self-study tasks can be found on Google Classroom.

In Cooking and Nutrition a self-study on food safety will be set at an appropriate point in the course.

**Parental support**

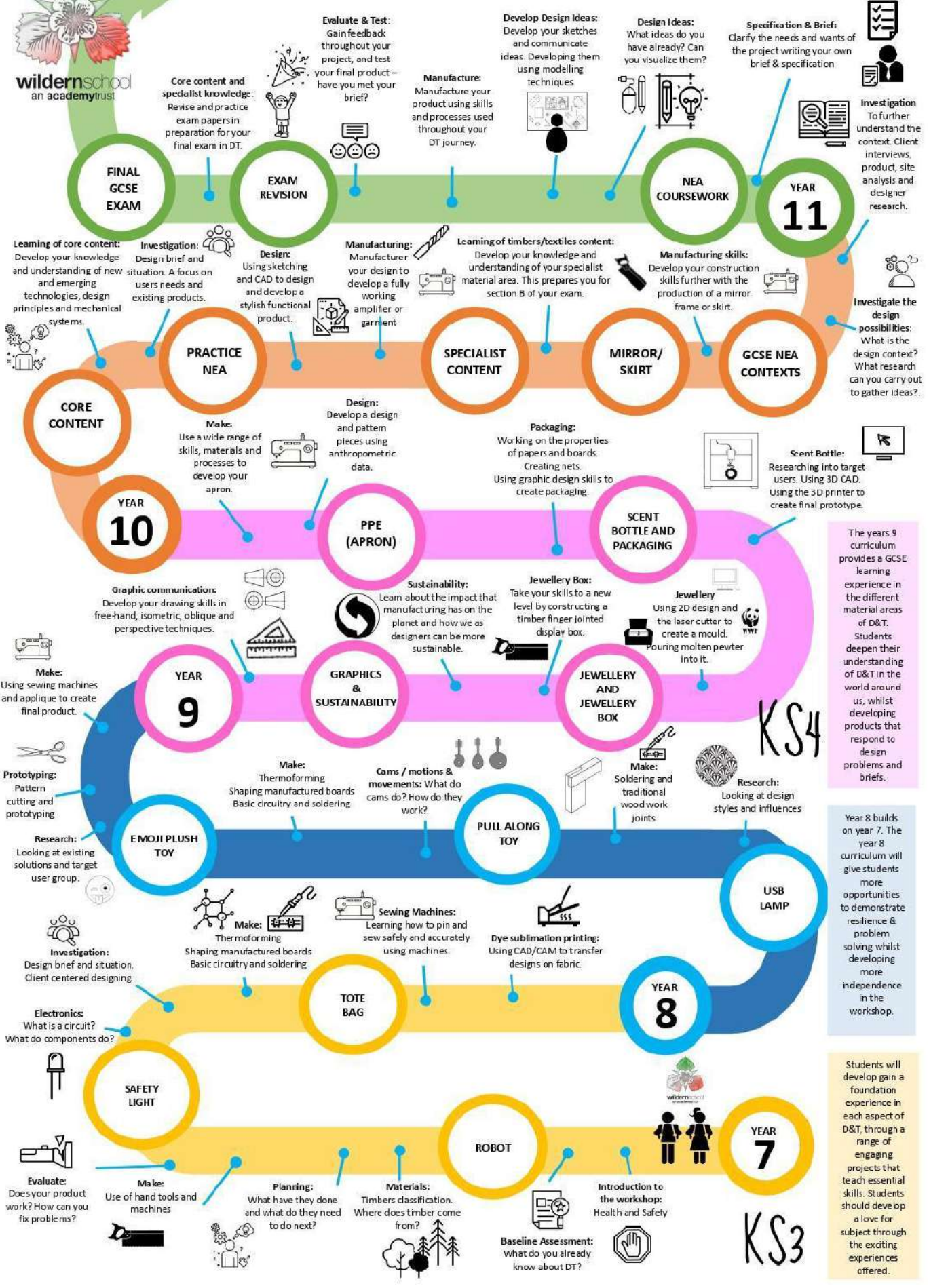
- Provide ingredients where necessary for practical food lessons.
- Check planners for recipes and money collection.
- Ensure your child has a pencil and pen for every lesson. Coloured pencils may be an advantage.
- Assist with research and check self-study is completed on time.

**Enrichment Ideas**

<p style="text-align: center;"><b><u>Suggested reading</u></b></p> <ul style="list-style-type: none"><li>● Design: The whole story</li><li>● Design: The definitive history</li><li>● Fashion: The definitive visual history</li><li>● Jamie Oliver 5 ingredients</li><li>● Biographies of designers and chefs</li></ul>	<p style="text-align: center;"><b><u>Films &amp; documentaries</u></b></p> <ul style="list-style-type: none"><li>● Great british bake off</li><li>● Masterchef</li><li>● Inside the factory</li><li>● Food unwrapped</li><li>● BBC How to make</li><li>● BBC The great british sewing bee</li></ul>
<p style="text-align: center;"><b><u>Cultural experiences</u></b></p> <ul style="list-style-type: none"><li>● Big band fair</li><li>● Visiting local food markets and food festivals</li><li>● Goodwood festival of speed</li><li>● Farnborough air show</li><li>● New forest county show</li></ul>	<p style="text-align: center;"><b><u>Things to see and do locally</u></b></p> <ul style="list-style-type: none"><li>● INTECH</li><li>● 1851 trust</li><li>● Solent Sky</li><li>● Beaulieu</li><li>● Hovercraft museum</li></ul>
<p style="text-align: center;"><b><u>Top 3 Websites</u></b></p> <ul style="list-style-type: none"><li>● <a href="https://www.bbcgoodfood.com/">https://www.bbcgoodfood.com/</a></li><li>● <a href="http://www.technologystudent.com/">http://www.technologystudent.com/</a></li><li>● <a href="https://www.bbc.co.uk/programmes/b07mddgk">https://www.bbc.co.uk/programmes/b07mddgk</a></li></ul>	<p style="text-align: center;"><b><u>Things we do</u></b></p> <ul style="list-style-type: none"><li>● Run after school clubs. These include STEM club, Design club and Textiles club</li><li>● Run an after school cooking competition</li><li>● Share our love of the subject and what we do with our skills outside of teaching</li></ul>



# DESIGN & TECHNOLOGY LEARNING JOURNEY



The years 9 curriculum provides a GCSE learning experience in the different material areas of D&T. Students deepen their understanding of D&T in the world around us, whilst developing products that respond to design problems and briefs.

Year 8 builds on year 7. The year 8 curriculum will give students more opportunities to demonstrate resilience & problem solving whilst developing more independence in the workshop.

Students will develop gain a foundation experience in each aspect of D&T, through a range of engaging projects that teach essential skills. Students should develop a love for subject through the exciting experiences offered.

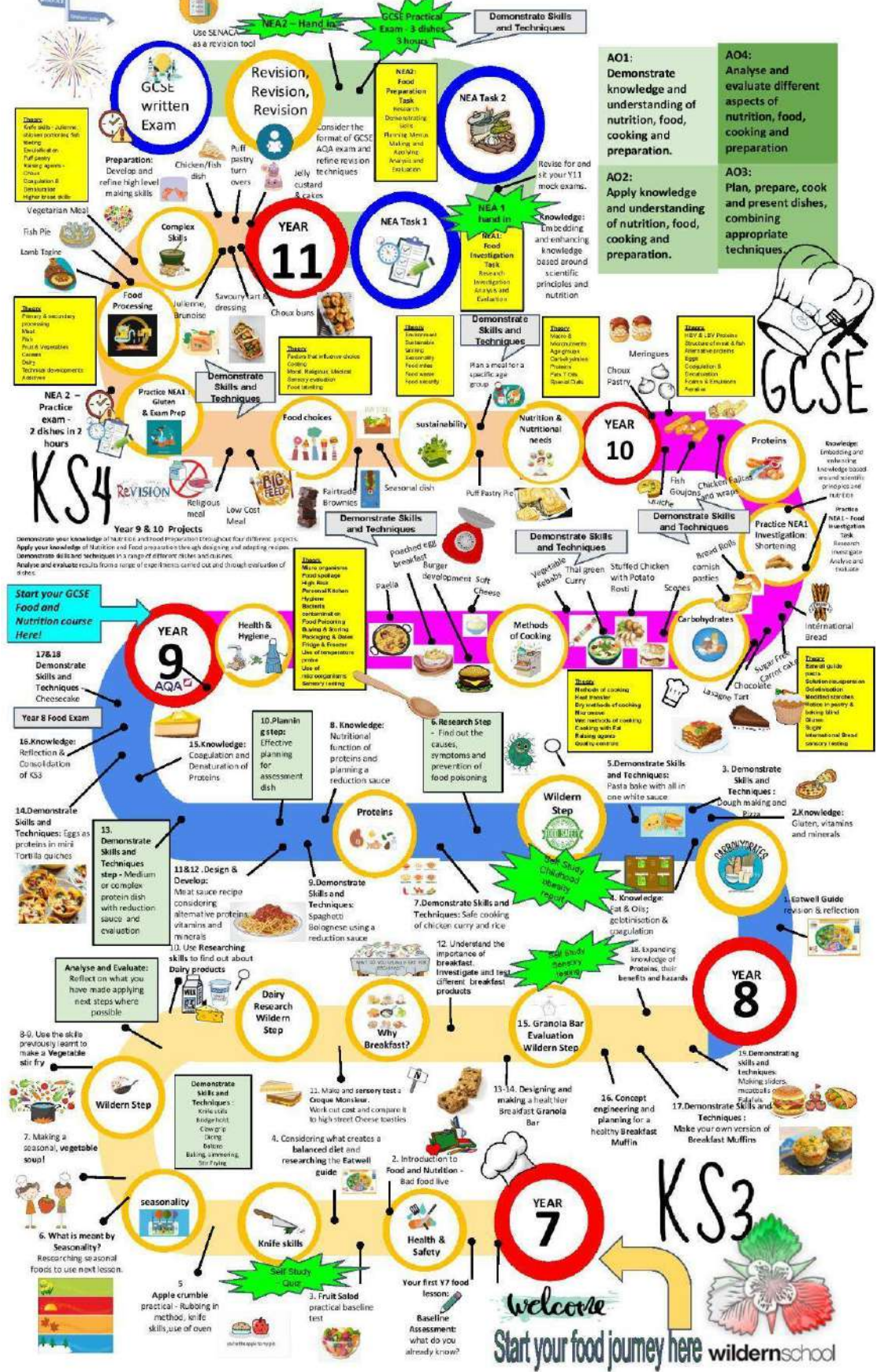




# Wildern School Learning Journey



## Food and Nutrition



**Department:** DRAMA

**Periods per fortnight** 2

**Class Organisation:** **Mixed Ability**

**Course Overview:**

Students will practically explore many styles of theatre ranging from Devised Drama to Comedy. They will also look at adapting film scripts for the stage as well as creating whole class scenes. In yr 8 we also consider what impact our work can have on an audience and how we can fulfil our artistic intentions through dramatic form. The explorations will enhance students' understanding of explorative strategies and performance skills.

**How students will be assessed**

Students are assessed at the end of each half termly Scheme of Work. Although the assessment is practical, students can still make progress by showing their understanding of topics and performance through self study tasks and assessment reflections. Students are graded by The Wildern Drama Steps for their performances and practical work.

**Self-study**

Students need to complete a written task set by the teacher after every practical unit. Additional self-study tasks will be set at the discretion of class teachers. As part of self study students will be encouraged to arrange their own extra rehearsal times in the Auditoriums.

**Parental support**

- To ensure the correct equipment and footwear is brought to every session.
- Supporting with extra rehearsals/extra-curricular activities.
- Supporting with the learning of dialogue

**Enrichment Ideas**

<p style="text-align: center;"><b><u>Suggested reading</u></b></p> <ul style="list-style-type: none"><li>● The Hunger Game Trilogy- Suzanne Collins</li><li>● Teachers by John Godber</li><li>● I love you Mum - Mark Wheeller</li><li>● Hard To Swallow- Mark Wheeller</li></ul>	<p style="text-align: center;"><b><u>Films &amp; documentaries</u></b></p> <ul style="list-style-type: none"><li>● The Hunger Games- Gary Ross</li><li>● Clue - Jonathan Lynch</li></ul>
<p style="text-align: center;"><b><u>Cultural experiences</u></b></p> <ul style="list-style-type: none"><li>● Backstage Tours at The Mayflower</li><li>● Day trips to London to visit The West End</li><li>● RSC tours and play to enjoy in Stratford Upon Avon</li><li>● Involvement with Inhouse Productions</li><li>● Outside Theatre at Mottisfont (National Trust)</li></ul>	<p style="text-align: center;"><b><u>Things to see and do locally</u></b></p> <ul style="list-style-type: none"><li>● The Mayflower Southampton - Backstage Tours and Summer Schools</li><li>● New Theatre Royal, Portsmouth</li><li>● Winchester Hat Fair - Free Outdoor Arts Festival</li><li>● The Point and Berry Theatre Youth Theatre and workshops</li><li>● The D@rt have a Thursday night drama club</li></ul>
<p style="text-align: center;"><b><u>Top 5 Websites</u></b></p> <ul style="list-style-type: none"><li>● <a href="http://www.shakespeareglobe.com/discover/about-us/virtual-tour">www.shakespeareglobe.com/discover/about-us/virtual-tour</a></li><li>● <a href="http://www.royalcourt.com">www.royalcourt.com</a></li><li>● <a href="http://www.visitlondon.com/vitually-london">www.visitlondon.com/vitually-london</a></li><li>● <a href="http://www.rsc.org.uk">www.rsc.org.uk</a> (virtual tours)</li><li>● <a href="https://www.bbc.co.uk/iplayer/group/p08gh374">https://www.bbc.co.uk/iplayer/group/p08gh374</a></li></ul>	<p style="text-align: center;"><b><u>Things we do</u></b></p> <ul style="list-style-type: none"><li>● School Production</li><li>● Drama Club/ Drama Club Showcase</li><li>● Theatre Visits</li><li>● Watching GCSE Drama work as an exam audience</li><li>● Being part of hot seating exercises for LAMDA candidates</li></ul>

# YEAR 7-11 DRAMA



Department: **ENGLISH**

Periods per fortnight **7**

Class Organisation: **Mixed Ability**

**Course Overview:**

All students study a range of contemporary and seminal texts, including Shakespeare. Additionally, students develop their writing skills for different purposes and audiences, and hone their speaking and listening skills through presentations, paired and group discussions and debate.

**How students will be assessed**

Students are assessed using a range of formative and summative mediums, including quizzing, creative writing tasks, comprehension activities and more formalised examinations, such as reading and spelling tests.

**Self-study**

Students receive weekly self-study. All work is set via Sparx reader which requires students to complete 45 minutes of reading per week.

**Parental support**

- Check self-study is completed on Sparx reader.
- Talk to students about their reading and encourage them to complete regular reading for pleasure at home.
- Help students to access the enrichment ideas, where possible.

**Enrichment Ideas**

<p style="text-align: center;"><b><u>Suggested reading</u></b></p> <ul style="list-style-type: none"><li>● ‘One of us is Lying’ series- Karen McMannus</li><li>● ‘Uglies’ series- Scott Westerfeld</li><li>● ‘Daz 4 Zoe’ Robert Swindles</li><li>● ‘Rani and Sukh’- Bali Rai</li><li>● ‘1984’- George Orwell</li><li>● Please see the school website for all the latest LRC (library) booklist recommendations</li></ul>	<p style="text-align: center;"><b><u>Films &amp; documentaries</u></b></p> <ul style="list-style-type: none"><li>● Any film production of Romeo and Juliet or relating to Shakespeare’s era</li><li>● The Woman in Black - <a href="https://www.thewomaninblack.com/">https://www.thewomaninblack.com/</a></li><li>● The Romantics and Us - Simon Schama</li></ul>
<p style="text-align: center;"><b><u>Cultural experiences</u></b></p> <ul style="list-style-type: none"><li>● The Globe Theatre, London</li><li>● Shakespeare’s house and the theatres of Stratford Upon Avon</li><li>● The Mayflower Theatre Southampton and the MAST theatre</li><li>● Visit a wild natural location like The Lake District or The Peak District</li></ul>	<p style="text-align: center;"><b><u>Things to see and do locally</u></b></p> <ul style="list-style-type: none"><li>● Portsmouth City Museum- they often have Arthur Conan Doyle exhibits as he was born in Portsmouth.</li><li>● Visit Milestones - the living Victorian village.</li><li>● Visit a moorland (The New Forest or Dartmoor) to experience the setting for Romantic poetry/ experience the power of nature.</li></ul>
<p style="text-align: center;"><b><u>Top 3 websites</u></b></p> <ul style="list-style-type: none"><li>● BBC Bitesize: KS3 Romeo and Juliet- <a href="https://www.bbc.co.uk/bitesize/topics/zfdj6sg">https://www.bbc.co.uk/bitesize/topics/zfdj6sg</a></li><li>● Romantic Poet: Wordsworth- <a href="https://wordsworth.org.uk/wordsworth/daffodils-and-other-poems/">https://wordsworth.org.uk/wordsworth/daffodils-and-other-poems/</a></li><li>● <a href="https://www.sparknotes.com/">https://www.sparknotes.com/</a></li></ul>	<p style="text-align: center;"><b><u>Things we do</u></b></p> <ul style="list-style-type: none"><li>● Theatre in schools drama workshops by Box Clever</li><li>● Share documentary clips to engage students and develop their understanding of the contextual timeframe.</li><li>● Encourage additional wider reading of detective, tragedy and mystery novels.</li></ul>



# KS3 English Learning Journey



What did Elizabethans believe about fate?

Why did Elizabethans love the theatre?



Practical: Write an agony aunt letter, giving Romeo and Juliet advice.

William Shakespeare



Why is this the most famous love story in history?



Elizabethan society

Romeo and Juliet



The Gothic

What techniques do gothic writers use to make their writing frightening?



Susan Hill

The Woman in Black

What are the tropes/conventions of Gothic writing?

William Blake



Practical: Create your own Romantic poetry



What is the supernatural?



Practical: Write your own powerful, 'history making' speech

Year 8

Romantic Poetry

The Romantic Legacy

How have the Romantics shaped our world?

It's not about love!

Who were the Romantic poets and what did they believe about society?

William Wordsworth



Why does Shakespeare use characters like Caliban?



Practical: Write an alternative ending to the play



The Tempest

Shakespeare

How does Shakespeare use magic in his plays?



The Canterbury Tales

What do good readers look like at Wildern?

What is Bedlam?

Year 7

12 Minutes to Midnight

Poetry Across Time



Christopher Edge

What are Gothic tropes and conventions?

What did 19th century London look and sound like?



What is a foot? What is metre?



Rhythm & Rhyme

Why does Iambic Pentameter sound like a heartbeat?



How is rap poetry?



Where did poetry originate?

Department: **GEOGRAPHY**

Periods per fortnight **3**

Class Organisation: **Mixed Ability**

**Course Overview:**

Students begin the year by looking at the continent of Asia, focusing particularly on China and their population growth, Australasia and Antarctica. In the Spring term, we study Africa to find out about differences in development, life in poverty and aid. Finally, students study how the complex interactions between humans and the environment can cause conflict in the fragile environments of Australasia and Antarctica.

**How students will be assessed**

Managing China's population  
Getting out of poverty  
The Coral Reef Assessment

**Self-study**

Self-study via Google Classroom, project based over a 3 week period. Examples include; Chinese New Year, Aid to Africa, The Biomes Project and entry to the GA competition.

**Parental support**

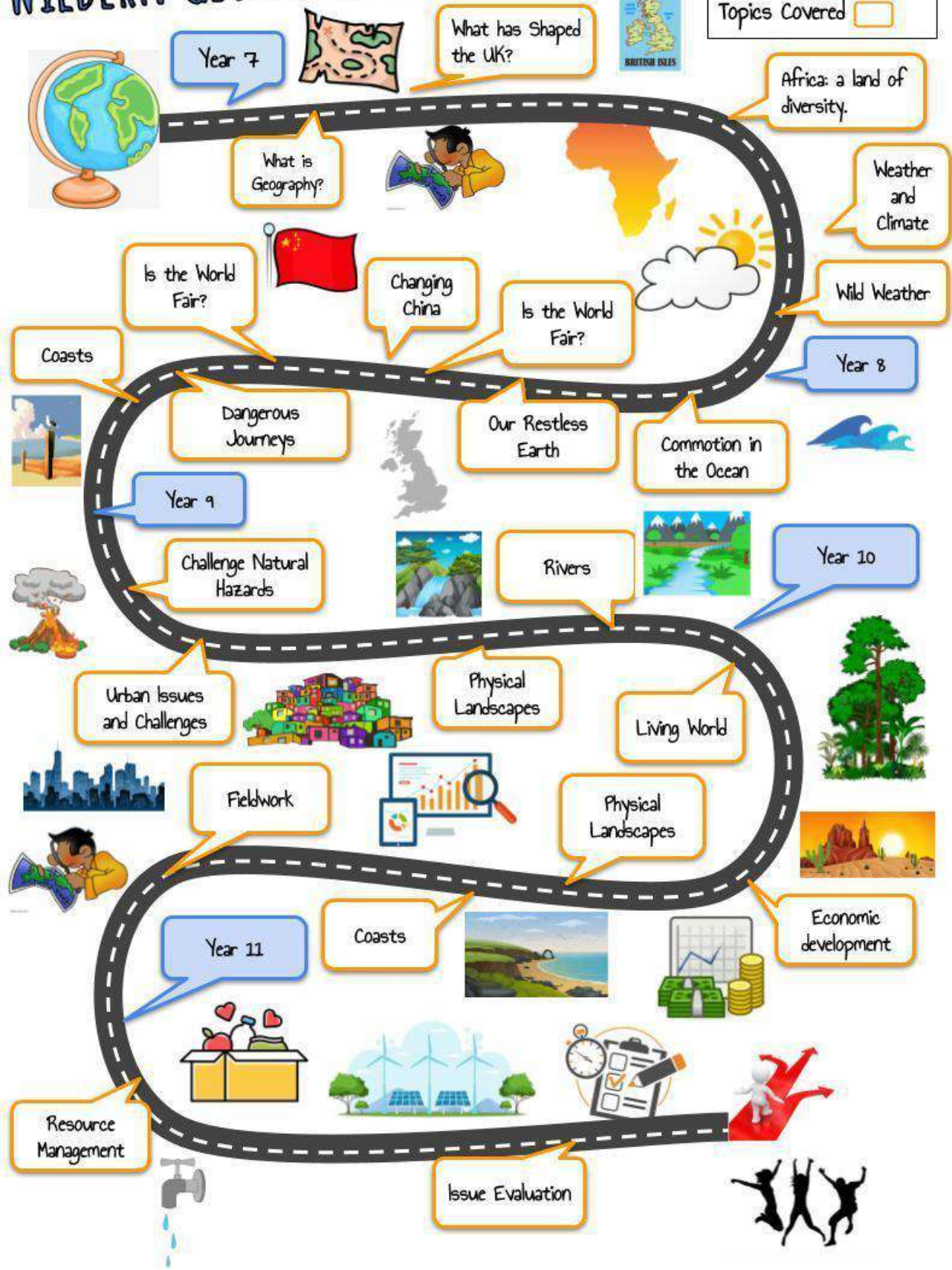
- In accessing subject specific resources like atlases and online sites like [www.worldatlas.com](http://www.worldatlas.com)
- Through taking part in student questionnaires and surveys.

**Enrichment Ideas**

<p style="text-align: center;"><b><u>Suggested reading</u></b></p> <ul style="list-style-type: none"><li>● Horrible Geography Series</li><li>● Lonely Planet, A journey through every country</li><li>● Lonely Planet: The Big Earth Book</li><li>● DK: Natural Wonders of the World</li><li>● DK: What's where in the world?</li></ul>	<p style="text-align: center;"><b><u>Films &amp; documentaries</u></b></p> <ul style="list-style-type: none"><li>● Seven Worlds, One Planet (David Attenborough)</li><li>● Documentaries by Simon Reeve</li><li>● The Impossible</li><li>● Frozen Planet On Thin Ice</li></ul>
<p style="text-align: center;"><b><u>Cultural experiences</u></b></p> <ul style="list-style-type: none"><li>● National Trust 50 things to do before you're 11 and ¾</li><li>● Have access to a world map at home e.g. poster, atlas scratch map, blow-up globe</li><li>● Make a homemade weather station &amp; keep a diary of the weather</li></ul>	<p style="text-align: center;"><b><u>Things to see and do locally</u></b></p> <ul style="list-style-type: none"><li>● Marwell Zoo - Rainforest Biome</li><li>● Science Museum, London</li><li>● London Eye</li><li>● National Parks e.g. New Forest</li><li>● Hengistbury Head &amp; Mudeford Spit</li></ul>
<p style="text-align: center;"><b><u>Top 5 Websites</u></b></p> <ul style="list-style-type: none"><li>● BBC Bitesize <a href="https://www.bbc.co.uk/bitesize">https://www.bbc.co.uk/bitesize</a></li><li>● BBC news <a href="https://www.bbc.co.uk/news">https://www.bbc.co.uk/news</a></li><li>● Geoguessr <a href="https://www.geoguessr.com/">https://www.geoguessr.com/</a></li><li>● World population clock <a href="https://www.worldometers.info/world-population/">https://www.worldometers.info/world-population/</a></li><li>● Google Earth <a href="https://earth.google.com/web/">https://earth.google.com/web/</a></li></ul>	<p style="text-align: center;"><b><u>Things we do</u></b></p> <ul style="list-style-type: none"><li>● Book Covering competition</li><li>● Trips to London including a boat trip on the River Thames and visit the London Aquarium.</li><li>● Pathways Lesson linked to development.</li><li>● Residential to Argoed Llwyd in the Bannau Brycheiniog (Brecon Beacons)</li></ul>

# WILDERN GEOGRAPHY CURRICULUM MAP

**Key**  
 Year Group   
 Topics Covered



Department: **HISTORY**

Periods per fortnight **3**

Class Organisation: **Mixed Ability**

**Course Overview:**

Students will study the turbulent 20<sup>th</sup> Century and explore the challenges facing the world today with a focus on the Titanic, women's suffrage, WW1, WW2, Civil rights, the Holocaust and the Atomic bomb.

**How students will be assessed**

Written assessments using Wildern Steps once a term. Group and individual self-study.

**Self-study**

*Self study is set via google classroom. There are a mixture of projects, reading comprehension, glossaries, quizzes and worksheets based around 'meanwhile elsewhere' tasks.*

**Parental support**

- Use of Library for research.
- Support with planning and meeting deadlines.
- Use of google classroom for extension and support information.

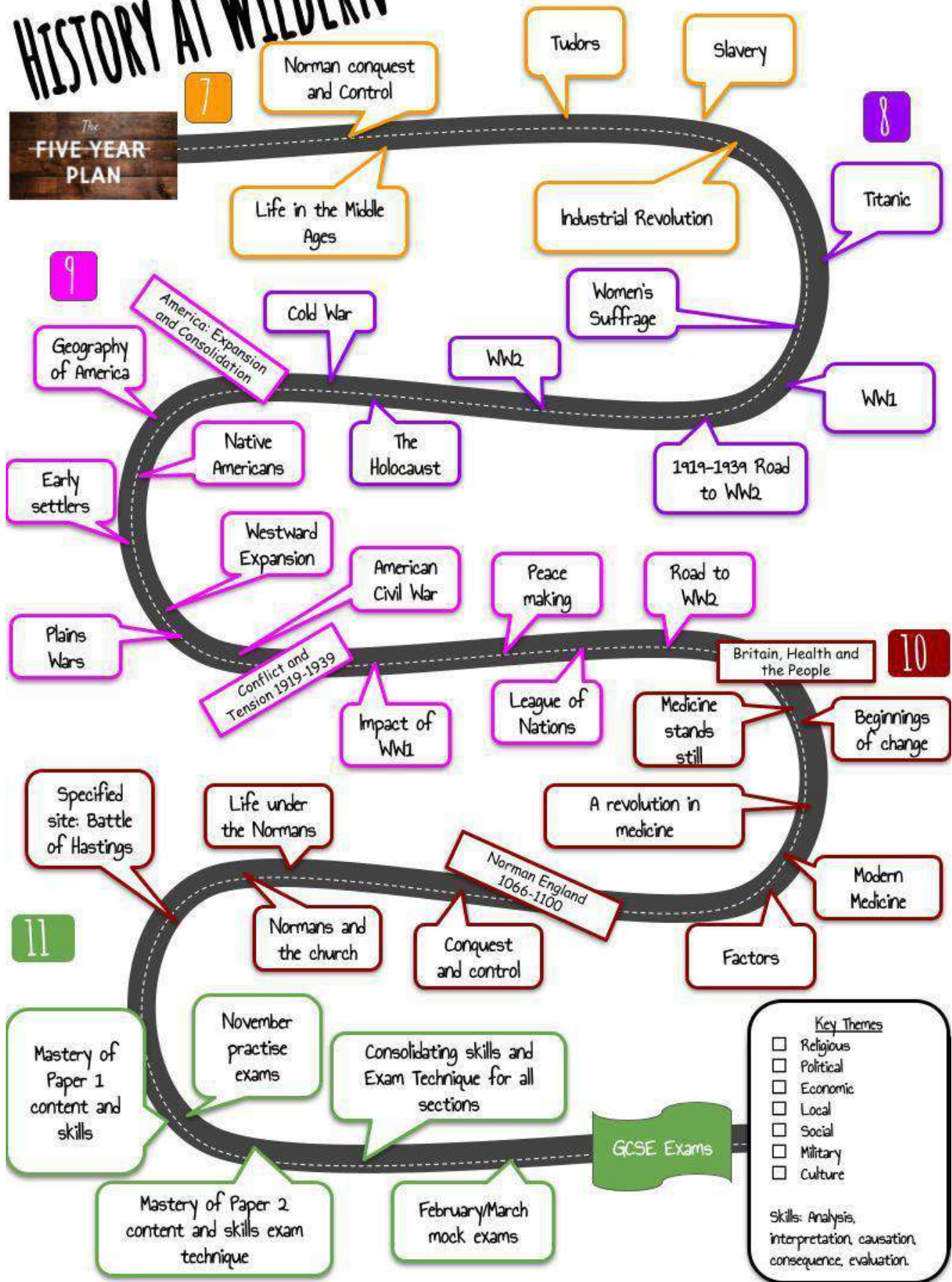
**Enrichment Ideas**

<p style="text-align: center;"><b><u>Suggested reading</u></b></p> <ul style="list-style-type: none"><li>● When Hitler Stole Pink Rabbit - Judith Kerr (WW2)</li><li>● Private Peaceful - Michael Morpurgo (Ww1)</li><li>● The Book Thief - Markus Zusak (WW2)</li><li>● Wave Me Goodbye - Jacqueline Wilson (Ww2)</li></ul>	<p style="text-align: center;"><b><u>Films &amp; documentaries (please check rating of films)</u></b></p> <ul style="list-style-type: none"><li>● Dunkirk</li><li>● Pearl Harbour</li><li>● Midway</li><li>● Hidden Figures</li></ul>
<p style="text-align: center;"><b><u>Cultural experiences</u></b></p> <ul style="list-style-type: none"><li>● Battle Abbey</li><li>● Imperial War museum</li><li>● Tower of London/ London Dungeons</li><li>● National History museum</li><li>● Mayflower theatre (War horse)</li></ul>	<p style="text-align: center;"><b><u>Things to see and do locally</u></b></p> <ul style="list-style-type: none"><li>● D Day Museum Portchester</li><li>● Fort Nelson</li><li>● Southampton Titanic Museum (Seacity museum)</li><li>● Chapel, grounds and cemetery at Royal Victoria Country Park</li></ul>
<p style="text-align: center;"><b><u>Top 5 Websites</u></b></p> <ul style="list-style-type: none"><li>● BBC bitesize <a href="http://www.bbc.co.uk/bitesize/subjects/zk26n39">www.bbc.co.uk/bitesize/subjects/zk26n39</a></li><li>● Titanic twitter (real time): <a href="https://twitter.com/titanic_live?lang=en">https://twitter.com/titanic_live?lang=en</a></li><li>● BBC teach <a href="http://www.bbc.co.uk/teach/ks3-history/zhbdpg">www.bbc.co.uk/teach/ks3-history/zhbdpg</a></li><li>● Youtube clips '<a href="#">horrible histories channel</a>', 'woeful second world war'</li><li>● '<a href="#">HISTORY</a>' youtube channel</li></ul>	<p style="text-align: center;"><b><u>Things we do</u></b></p> <ul style="list-style-type: none"><li>● Imperial War museum</li><li>● Movies: Titanic, Suffragette, War Horse</li><li>● Virtual museum tours</li><li>● Archaeology club</li></ul>



# HISTORY AT WILDERN

The FIVE YEAR PLAN



Department: **MATHEMATICS**

Periods per fortnight **8**  
Class Organisation: **Broadly Banded**

**Course Overview:**

Year 8 students follow the KS3 National Curriculum. Investigative skills are developed and accurate use of equipment is practised. Students are taught effective use of their own scientific calculators. Topics covered include:

**Autumn:** Transformations, algebraic functions, linear graphs, constructions, loci, calculator skills, plans and elevations.

**Spring:** Applying averages, interpreting data representations, integers, powers and roots, geometric reasoning, further sequences, applications of probability, perimeter, area and volume.

**Summer:** Fractions, percentages, ratio, proportion, formulae, solving equations, further transformations and a data investigation.

**How students will be assessed**

Ongoing assessment through regular in class assessments, formal exams in May, self-study tasks and through formative assessment strategies in the classroom.

**Self-study**

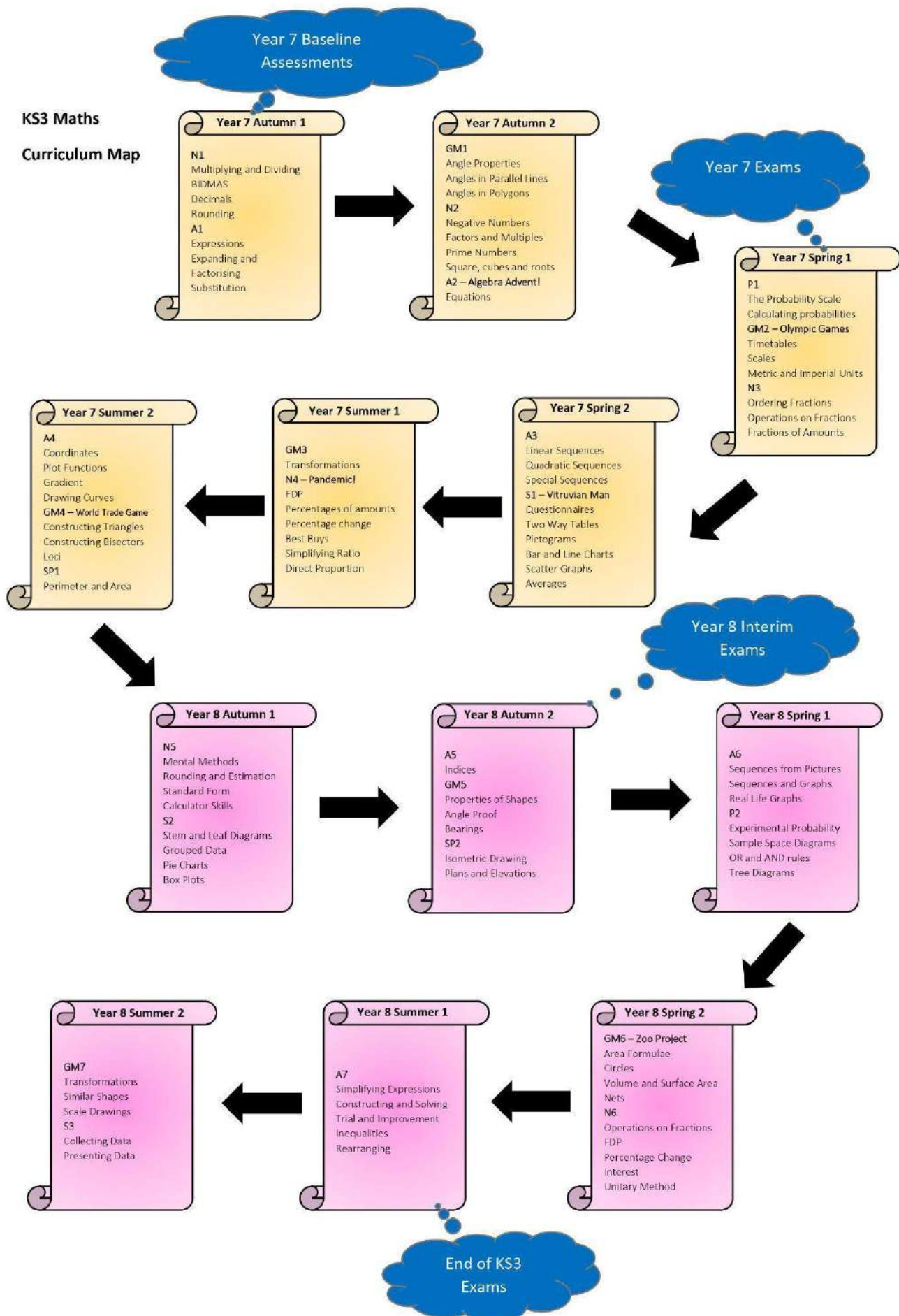
Students receive self-study each week through Sparx Maths. Tasks are set which should take students on average 30 minutes each week.

**Parental support**

- Use teacher’s marking and feedback in your child’s exercise book to support your child with topics they are finding difficult. The website [sparxmaths.uk](http://sparxmaths.uk) gives very comprehensive and well-structured activities.
- Ensure your child has all the relevant equipment including a scientific calculator. We recommend the Casio 991ex.
- Ensure your child is confident with their times tables and basic number skills.

**Enrichment Ideas**

<p style="text-align: center;"><b><u>Suggested reading</u></b></p> <ul style="list-style-type: none"><li>● Can you solve my problems? by Alex Bellos</li><li>● The Number Devil by Hans Angus Enzensberger</li></ul>	<p style="text-align: center;"><b><u>Films &amp; documentaries</u></b></p> <ul style="list-style-type: none"><li>● Imitation Game (12A)</li><li>● The Martian (12)</li></ul>
<p style="text-align: center;"><b><u>Cultural experiences</u></b></p> <ul style="list-style-type: none"><li>● Bletchley Park, Milton Keynes</li><li>● Playing resources-based games (e.g. Settlers of Catan)</li><li>● Winchester Problem Solving club</li></ul>	<p style="text-align: center;"><b><u>Things to see and do locally</u></b></p> <ul style="list-style-type: none"><li>● Solent Air Museum</li><li>● Winchester Science centre</li></ul>
<p style="text-align: center;"><b><u>Top 5 Websites</u></b></p> <ul style="list-style-type: none"><li>● Sparx Maths: <a href="http://sparxmaths.uk/student">sparxmaths.uk/student</a></li><li>● PiXL timestable app: <a href="https://timestable.pixl.org.uk/Timestables.html">https://timestable.pixl.org.uk/Timestables.html</a></li><li>● Nrich: <a href="https://nrich.maths.org/secondary">https://nrich.maths.org/secondary</a></li><li>● UKMT Maths Challenge: <a href="https://www.ukmt.org.uk/competitions/solo">https://www.ukmt.org.uk/competitions/solo</a></li><li>● Numberphile Youtube Channel: <a href="https://www.youtube.com/channel/UCoxcjg-8xIDTYguz647V5A">https://www.youtube.com/channel/UCoxcjg-8xIDTYguz647V5A</a></li></ul>	<p style="text-align: center;"><b><u>Things we do</u></b></p> <ul style="list-style-type: none"><li>● NSPCC Number Day (February)</li><li>● Year 7 and 8 Puzzle Club (Monday lunchtimes in room 670)</li><li>● UKMT Junior Maths Challenge</li></ul>



Department: **MFL – FRENCH/SPANISH/GERMAN**

Periods per fortnight **5**

Class Organisation: **Mixed Ability**

**Course Overview:**

In year 8, students continue to speak and write across a wider range of contexts, including their town, food, fashion and holidays. Within these contexts, students develop the ability to use the past, present and future tenses, express a wider range of opinions and use more complex language. All skills in year 8 build on and extend learning from year 7. Students read longer and more challenging texts and begin to write extended pieces of writing.

**How students will be assessed**

Listening, Reading and Writing assessments each term. End of Key Stage assessment in May/June.

**Self-study**


All self-study tasks are set on Google Classroom. Self-study alternates between vocabulary learning on Memrise.com and online reading, listening and writing tasks on [www.sentencebuilders.com](http://www.sentencebuilders.com). Vocabulary should be practised daily to support students' recall of key vocabulary. Sentencebuilder.com tasks should take approximately 30 minutes.

**Parental support**


- Test vocabulary and spellings weekly.
- Encourage students to use Memrise and [sentencebuilders.com](http://www.sentencebuilders.com) to practise their language at home.

**Enrichment Ideas**

<p style="text-align: center;"><b><u>Suggested Reading</u></b></p> <ul style="list-style-type: none"><li>● <b>French:</b> Language guide online French reading, 1jour1actu</li><li>● <b>German:</b> Deutsche Welle Deutsch Interaktiv [search online]</li><li>● <b>Spanish:</b> Thespanishexperiment.com stories</li></ul>	<p style="text-align: center;"><b><u>Films &amp; documentaries</u></b></p> <ul style="list-style-type: none"><li>● <b>French:</b> Kirikou et la sorcière, La prophétie des grenouilles, Mini-Loup(Wolf)</li><li>● <b>German:</b> Goethe Institut Erste Wege in Deutschland, Harry gefangen in der Zeit (Deutsche Welle website)</li><li>● <b>Spanish:</b> Cortometrajes en Youtube (Short Films)- 'Cuerdas', 'El Regalo' 'Alma' 'El número', Nailed it! (Baking show!) Netflix</li></ul>
<p style="text-align: center;"><b><u>Cultural experiences</u></b></p> <ul style="list-style-type: none"><li>● <b>French:</b> Wildern Paris Trip, PenPal letters with school in northern France</li><li>● <b>German:</b> German exchange experience</li><li>● <b>Spanish:</b> Pen pal letters with partner school in Mallorca Explore the Guggenheim Bilbao <a href="https://artsandculture.google.com/project/guggenheim-bilbao">https://artsandculture.google.com/project/guggenheim-bilbao</a></li></ul>	<p style="text-align: center;"><b><u>Things to see and do locally</u></b></p> <ul style="list-style-type: none"><li>● <b>French:</b> La Parisienne café/restaurant Romsey</li><li>● <b>German:</b> Stein Garten German bar Southampton</li><li>● <b>Spanish:</b> La Regata restaurant Southampton</li></ul>
<p style="text-align: center;"><b><u>Top 5 Websites</u></b></p> <ul style="list-style-type: none"><li>● <a href="http://www.memrise.com/www.quizlet.com">www.memrise.com/www.quizlet.com</a></li><li>● KS3 BBC Bitesize <a href="https://www.bbc.co.uk/bitesize/levels/z4kw2hv">https://www.bbc.co.uk/bitesize/levels/z4kw2hv</a></li><li>● <a href="https://www.busuu.com/">https://www.busuu.com/</a></li><li>● <a href="http://www.fluentU.com">www.fluentU.com</a> - Language blog</li><li>● <a href="http://www.lingo-play.com">www.lingo-play.com</a> - Language learning games</li></ul>	<p style="text-align: center;"><b><u>Things we do</u></b></p> <ul style="list-style-type: none"><li>● Foreign Language Film Club</li><li>● Arabic Club</li><li>● European Culture Club</li><li>● European Day of Languages</li></ul>



<p><b>All about me</b></p> <ul style="list-style-type: none"> <li>-My name is...</li> <li>-I am... years old</li> <li>-My birthday is on the...</li> <li>-I am (nationality)</li> <li>-Phonics</li> <li>-I have a...</li> </ul>	<p><b>My family</b></p> <ul style="list-style-type: none"> <li>-My brother is (personality adjectives + physical descriptions)</li> <li>- There are four people in my family</li> <li>- I have a snake!</li> </ul>	<p><b>What I like at school</b></p> <ul style="list-style-type: none"> <li>-I like French because it is fun and very important.</li> <li>-I have Maths at 12 o'clock.</li> <li>-There is a library.</li> </ul>	<p><b>My hobbies</b></p> <ul style="list-style-type: none"> <li>-In my free time I like to...</li> <li>- Present tense verbs (I play football)</li> </ul>	<p><b>Where I live</b></p> <ul style="list-style-type: none"> <li>-I live in a big house.</li> <li>- In my bedroom there is a table next to the bed.</li> <li>-In my town there is a...</li> </ul>
<p><b>Food &amp; health</b></p> <ul style="list-style-type: none"> <li>-I like vegetables because they are healthier than hamburgers.</li> <li>- I don't eat meat because I'm a vegetarian.</li> </ul>	<p><b>Fashion</b></p> <ul style="list-style-type: none"> <li>- I want that dress.</li> <li>- I am going to wear a white T-shirt to the party.</li> <li>-My trousers are longer than yours.</li> </ul>	<p><b>Music</b></p> <ul style="list-style-type: none"> <li>-I like to listen to rock because it is relaxing and it makes me smile.</li> <li>-My favourite singer is... because...</li> </ul>	<p><b>Relationships</b></p> <ul style="list-style-type: none"> <li>-A good friend is + ADJ</li> <li>-I get on well with...</li> <li>-In the future I am going to get married.</li> </ul>	<p><b>Technology</b></p> <ul style="list-style-type: none"> <li>-I use my mobile phone to chat with my friends.</li> <li>-I think that my laptop is more useful than my tablet.</li> <li>-Advantages/Disadvantages.</li> </ul>
<p><b>Festivals &amp; celebrations</b></p> <ul style="list-style-type: none"> <li>-If I could I would like to travel.</li> <li>-Last year I went to France to celebrate Bastille Day.</li> </ul>	<p><b>My local area</b></p> <ul style="list-style-type: none"> <li>-I live in the countryside...</li> <li>-I love my house because it is modern.</li> <li>-My house is near the train station.</li> </ul>	<p><b>Social issues</b></p> <ul style="list-style-type: none"> <li>-If I had more time I would volunteer as... Environment</li> <li>-Poverty and unemployment</li> </ul>	<p><b>Holidays</b></p> <ul style="list-style-type: none"> <li>-If I was rich I would go to Fiji</li> <li>-My ideal holiday would be...</li> <li>- it rained</li> </ul>	<p><b>My studies</b></p> <ul style="list-style-type: none"> <li>-I like school because my teachers are caring. However, I think the rules are stupid.</li> <li>-My primary school used to be smaller than my secondary school.</li> </ul>
<p><b>My future career</b></p> <ul style="list-style-type: none"> <li>-When I'm older I want to be...</li> <li>-If I worked as a teacher it would be...</li> <li>-I wish I could find a well-paid job.</li> </ul>				



MFL 5 YEAR JOURNEY

**SUPPORTING YOU TO BE RESPONSIBLE, CONFIDENT, HEALTHY AND RESPECTFUL YOUNG ADULTS  
 PREPARED FOR LIFE AND WORK IN AN EVER CHANGING WORLD**

**Course Overview:**

The Education for life programme supports students to be responsible, healthy, confident and respectful young adults prepared for life and work in an ever changing world. There are three key themes that all year groups will focus on throughout the year:

- Health & Wellbeing
- Relationships
- Living in the Wider World

Education for Life encompasses our whole school statutory Relationships & Sex Education and focuses upon students economic and personal wellbeing. Students are encouraged to develop their personal opinions and discussion skills. Topics included in Year 8 Education for Life include Drugs & Alcohol, No Outsiders - Prejudice and Discrimination, Setting Goals (Careers), Emotional Wellbeing, Identity & Relationships and British Values and Citizenship.

**How students will be assessed**

Students are assessed using a variety of methods on the work that they complete throughout the year including self or peer assessment in each unit and google quizzes at the end of each half term.

**Self-study**

Self-study is not applicable in this subject.

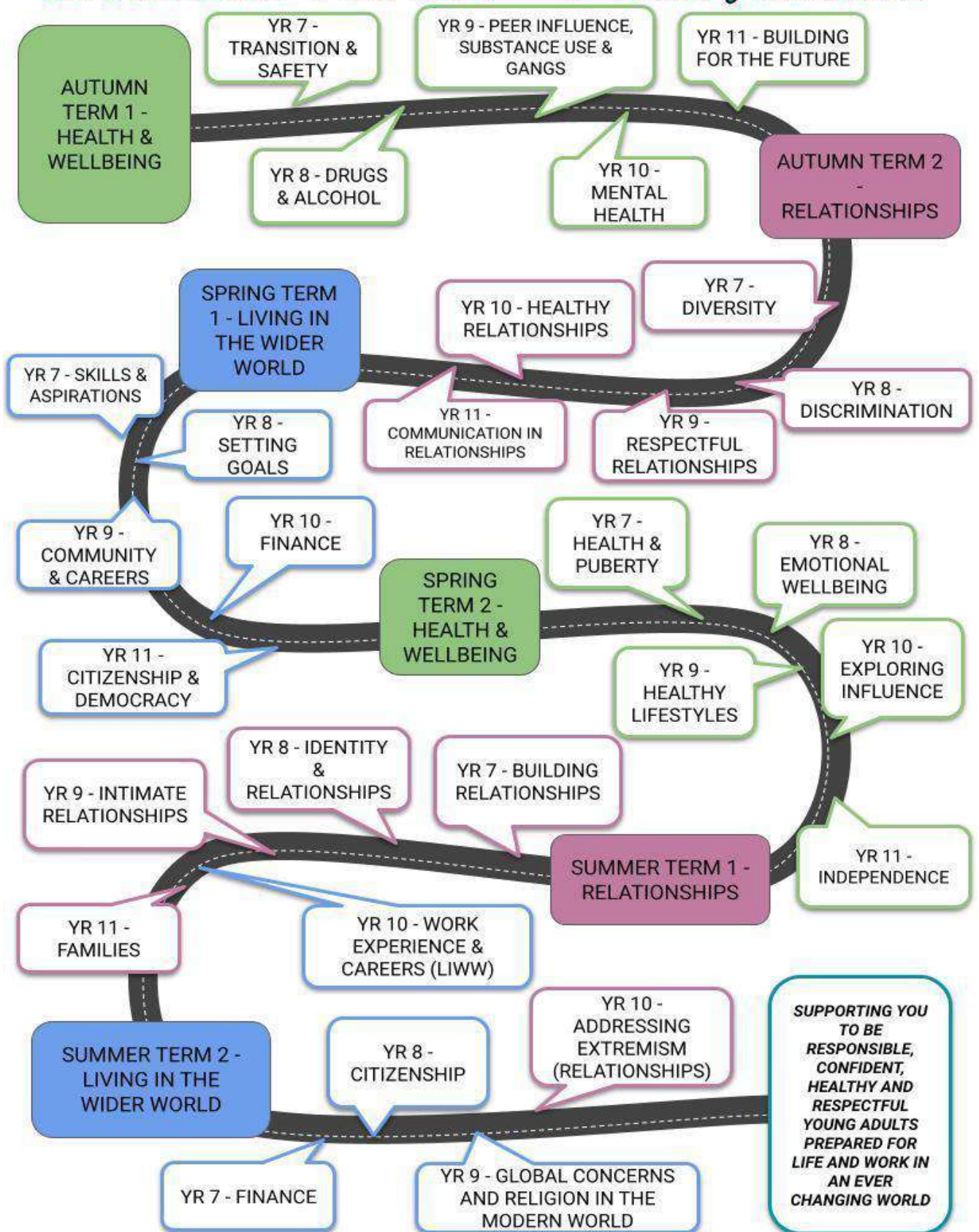
**Parental support**

- Ensure that you encourage your child to keep up to date with current affairs.
- Support can be given to your child by encouraging debate and discussion at home.

**Enrichment Ideas**

<p style="text-align: center;"><b><u>Suggested reading</u></b></p> <ul style="list-style-type: none"> <li>● A good clean edge, Vincent Caldy</li> <li>● The garbage king, Elizabeth Laird</li> <li>● The Boy at the back of the class, Onjali Q.Rauf</li> <li>● Keeping Mum, Marianne Talbot</li> </ul>	<p style="text-align: center;"><b><u>Films &amp; documentaries</u></b></p> <ul style="list-style-type: none"> <li>● Modern Family</li> </ul>
<p style="text-align: center;"><b><u>Cultural experiences</u></b></p> <ul style="list-style-type: none"> <li>● National Trust</li> <li>● Theatre trips linked to themes</li> </ul>	<p style="text-align: center;"><b><u>Things to see and do locally</u></b></p> <ul style="list-style-type: none"> <li>● Explore youth parliament</li> </ul>
<p style="text-align: center;"><b><u>Top 5 Websites</u></b></p> <ul style="list-style-type: none"> <li>● <a href="http://youngminds.org.uk/">youngminds.org.uk/</a></li> <li>● <a href="http://stem4.org.uk/">stem4.org.uk/</a></li> <li>● <a href="http://www.childline.org.uk/">www.childline.org.uk/</a></li> <li>● <a href="http://www.bbc.co.uk/newsround">www.bbc.co.uk/newsround</a></li> <li>● <a href="http://www.byc.org.uk/uk/uk-youth-parliament">www.byc.org.uk/uk/uk-youth-parliament</a></li> </ul>	<p style="text-align: center;"><b><u>Things we do</u></b></p> <ul style="list-style-type: none"> <li>● Lessons on mindfulness and wellbeing</li> </ul>

# EDUCATION FOR LIFE - 5 YEAR JOURNEY



Department: **MUSIC**

Periods per fortnight **3**

Class Organisation: **Mixed Ability**

**Course Overview:**

Students develop their understanding and knowledge of skills, technique and style through termly units. This includes work in the Digital Media Suite where Music Technology is explored further. The units in Year 8 are Songwriting, Art and Music and Dance Music.

**How students will be assessed**

Student’s knowledge and understanding are assessed through performance, composition or listening and evaluating tasks.

**Self-study**

Two self-study activities should be completed per term, for each unit of work. These will be set through Google classroom and be in the form of a mid-unit reflection and google form listening quiz.

**Parental support**

- Encourage your child to listen to and appreciate a wide range of music and styles.
- Take an interest and encourage independent research in the current musical unit.
- Encourage your child to take part in an extended curricular opportunity and instrument lessons.
- Listen to any form of ‘Live’ music.
- Use appropriate music software with a midi keyboard on the home computer.

**Enrichment Ideas**

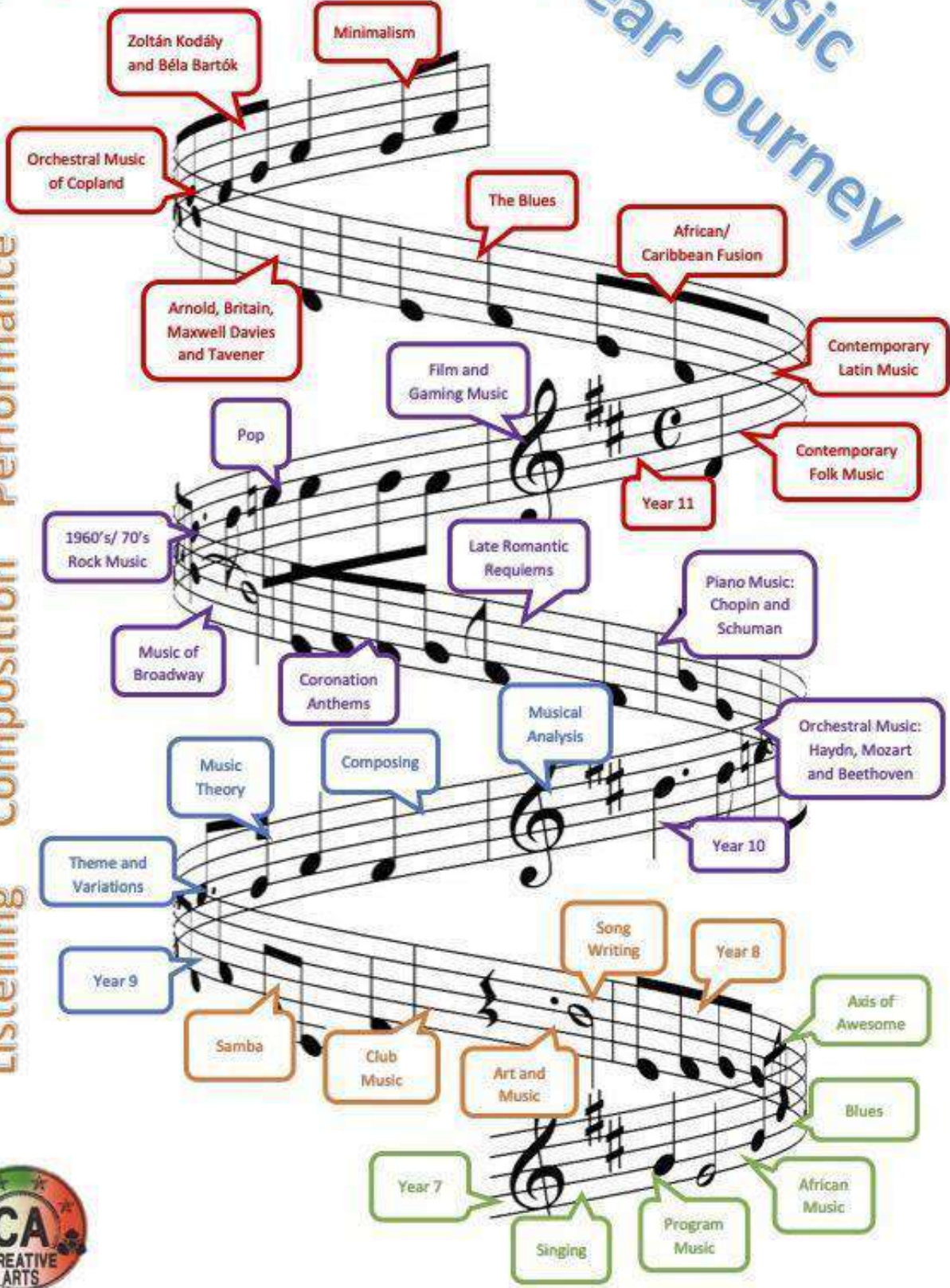
<p style="text-align: center;"><b><u>Suggested reading</u></b></p> <ul style="list-style-type: none"><li>● Piano &amp; Keyboard Chords: Easy to Use, Easy to Carry, One Chord on Every Page by Jake Jackson</li><li>● Adventures In Songwriting: A Guide For Kids by Gina Boe and Sue Smith</li></ul>	<p style="text-align: center;"><b><u>Films &amp; documentaries</u></b></p> <ul style="list-style-type: none"><li>● The Young Person’s Guide to the Orchestra (Benjamin Britten) narrated by Peter Pears. Can be found on youtube.</li><li>● “Score: A Film Music Documentary” by Matt Schrader</li></ul>
<p style="text-align: center;"><b><u>Cultural experiences</u></b></p> <ul style="list-style-type: none"><li>● Externally run enrichment (Samba and Songwriting Workshop)</li><li>● Performing in the Berry theatre (Christmas concert, Summer concert, Year 8 musician of the year)</li><li>● Busking zone performance opportunity</li><li>● Wildern Music Festival</li></ul>	<p style="text-align: center;"><b><u>Things to see and do locally</u></b></p> <ul style="list-style-type: none"><li>● Musical productions at the Mayflower theatre</li><li>● Christmas/Summer concerts at the Berry theatre</li></ul>
<p style="text-align: center;"><b><u>Top 5 Websites</u></b></p> <ul style="list-style-type: none"><li>● Youtube piano tutorial videos: <a href="https://www.youtube.com/channel/UC9WDdfvgUbylrFTUqBnQYQ">https://www.youtube.com/channel/UC9WDdfvgUbylrFTUqBnQYQ</a></li><li>● BBC bitesize KS3 Music: <a href="https://www.bbc.co.uk/bitesize/subjects/zmsvr82">https://www.bbc.co.uk/bitesize/subjects/zmsvr82</a>.</li><li>● Music Theory: <a href="https://www.musictheory.net/">https://www.musictheory.net/</a></li><li>● Online music making: <a href="http://www.bandlab.com">www.bandlab.com</a></li><li>● Sheet music: <a href="https://www.musicroom.com/">https://www.musicroom.com/</a></li></ul>	<p style="text-align: center;"><b><u>Things we do</u></b></p> <ul style="list-style-type: none"><li>● School ensembles (KS3 choir, percussion ensemble, ukulele club, orchestra/brass band etc)</li><li>● Year 8 theory club and Year 8 Enrichment club</li><li>● Wildern Music Festival - Year 8 songwriting competition</li></ul>





# 5 Year Journey Music

Listening  
Composition  
Performance



Department: **PHYSICAL EDUCATION**

Periods per fortnight **4**

Class Organisation: **Broadly Banded & Mixed Gender**

**Course Overview:**

Students continue to build on the foundations of the concept-curriculum that were established in Year 7 with a greater emphasis placed on the students' depth of understanding each concept. This will then radiate to their ability to more effectively apply and transfer the six key concepts across a range of different practical activities and sports.

The **SIX KEY CONCEPTS** students are advanced in Year 8 are;

1. **Overcoming Opponents (Indoor):** Basketball, Badminton, Handball, Table Tennis, Volleyball.
2. **Overcoming Opponents (Outdoor):** Football, Rugby, Hockey, Netball, Cricket, Tennis, Rounders & Athletics.
3. **Aesthetic Technique & Performance:** Gymnastics, Dance, Trampolining & Athletics.
4. **Water Technique & Safety:** Swimming, Personal Survival, Synchronised Swimming, Water Polo
5. **Health-Related Exercise:** Fitness Classes, Fitness Suite Sessions & Outdoor fitness sessions.
6. **Sports Culture:** American Football, Lacrosse, Kabaddi, Aussie Rules, Gaelic Football.

In addition, students begin to learn the fundamental knowledge and understanding of how to lead a healthy, active lifestyle, wider understanding of practical activities and sports and begin their journey as part of **#TeamWildern**.

**How students will be assessed:**

Students will be assessed using the specially devised step-criteria for PE which analyses students ability to understand, apply and transfer concepts across a range of physical activities and sports in addition to an online theory test.

**Self-study:**

PE KNOWledge Quiz set each term - Set online using Google Classroom.

**Parental support**

- Ensure your child has the full & correct PE kit for **EVERY** lesson (*Even if injured students are encouraged to play an active role in lessons and so will be expected to change unless medically unable*).
- Remind your child to come **APPROPRIATELY EQUIPPED** for the varying weather conditions.
- Support PE staff in clarifying what is **PERMITTED & NOT PERMITTED** to be worn during PE lessons (See pg.13)
- Provide a written **NOTE** if your child is unable to fully participate in PE lessons.
- Encourage your child to take part in **ALL** aspects of PE & adopt a **POSITIVE** attitude towards physical activity.
- Encourage attendance at **EXTRA-CURRICULAR** activities.

**Visit our dedicated PE Twitter account to see all the fantastic enrichment opportunities available to you (@WildernSchoolPE)**

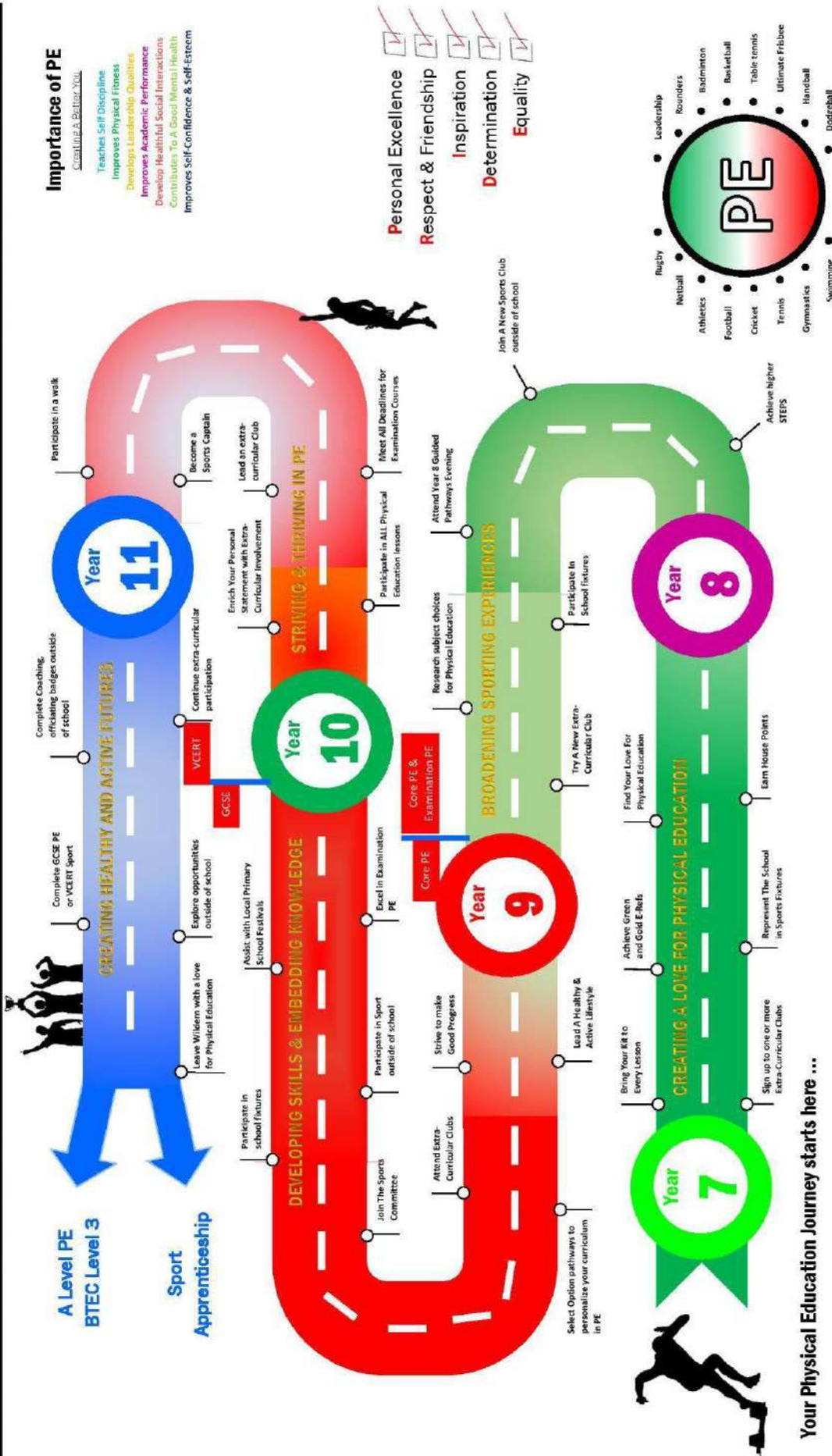
**Enrichment Ideas:**

<p style="text-align: center;"><b><u>Suggested reading</u></b></p> <p><a href="#">Understanding the Concept-Curriculum</a> <a href="#">BBC Sport: Updates on Sport from UK &amp; Abroad</a> <a href="#">Sky Sports: News and Updates from the World</a></p>	<p style="text-align: center;"><b><u>Films &amp; documentaries</u></b></p> <ul style="list-style-type: none"><li>• <a href="#">McFARLAND, USA</a> (2015) PG</li><li>• <a href="#">REMEMBER THE TITANS</a> (2000) PG</li><li>• <a href="#">THE BLIND SIDE</a> (2009) PG-13</li></ul>
<p style="text-align: center;"><b><u>Cultural experiences</u></b></p> <ul style="list-style-type: none"><li>• Join a Wildern sports club or a local sports club.</li><li>• Take part in sports fixtures locally, regionally, nationally &amp; internationally.</li><li>• Attend elite levels sporting events as a spectator.</li></ul>	<p style="text-align: center;"><b><u>Things to see and do locally</u></b></p> <ul style="list-style-type: none"><li>• <a href="#">Southampton FC</a> @ St Marys</li><li>• <a href="#">Hampshire Cricket</a> @ The Ageas Bowl</li><li>• <a href="#">Trojans</a> Rugby, Hockey &amp; Squash Club</li><li>• <a href="#">Southampton Athletics Club</a></li></ul>
<p style="text-align: center;"><b><u>Top 3 Websites</u></b></p> <ul style="list-style-type: none"><li>• <a href="https://www.bbc.co.uk/bitesize/examspecs/zxbg39q">https://www.bbc.co.uk/bitesize/examspecs/zxbg39q</a></li><li>• <a href="https://www.brianmac.co.uk/">https://www.brianmac.co.uk/</a></li><li>• <a href="https://www.teachpe.com/">https://www.teachpe.com/</a></li></ul>	<p style="text-align: center;"><b><u>Things we do</u></b></p> <ul style="list-style-type: none"><li>• Weekly after-school sports clubs</li><li>• Competitive Teams and fixtures.</li><li>• Hosted Primary School Events.</li></ul>



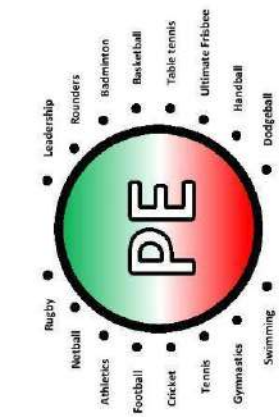
# Wildern Physical Education Journey

## Every Student Matters, Every Moment Counts



- ### Importance of PE
- Contribute A Better You
- Teaches Self Discipline
  - Improves Physical Fitness
  - Develops Leadership Qualities
  - Improves Academic Performance
  - Develops Healthy Social Interactions
  - Contributes To A Good Mental Health
  - Improves Self Confidence & Self Esteem

- Personal Excellence
- Respect & Friendship
- Inspiration
- Determination
- Equality



Your Physical Education Journey starts here ...

**Department:** RELIGIOUS EDUCATION

**Periods per fortnight** 2

**Class Organisation:** Mixed Ability

**Course Overview:**

In Year 8 students build on the skills developed in Year 7 and apply these to philosophical questions and units of work such as 'Does God Exist'? and 'Resurrection Detectives' They also complete a unit exploring the religion of Hinduism.

**How students will be assessed**

Students will be assessed in line with Wildern Steps through a written assessment in each unit through which they will be given targets on how to develop and reach their step. There will also be a mixture of self and peer assessment in order to encourage students to reflect on their own and others progress.

**Self-study**

Self-study has been designed so that students can be creative and develop independence in selecting the way they present their work.

**Autumn:** Resurrection Detectives - Google Quizzes to consolidate previous knowledge

**Spring:** Hinduism Perfect Pilgrimage

**Summer:** Spirited Arts competition

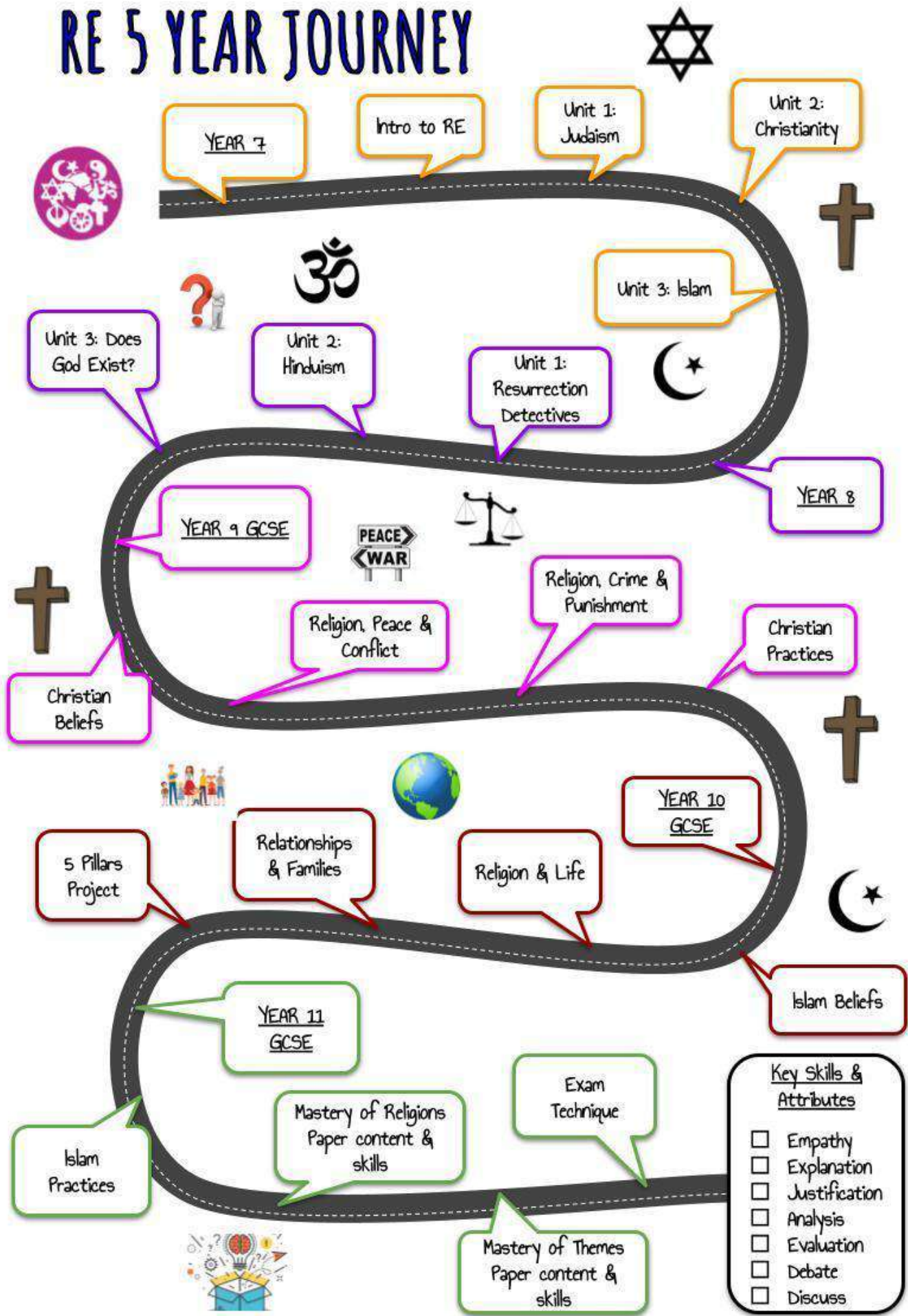
**Parental support**

- Encourage students to debate and discuss the topics and concepts they have covered in their RE lessons at home.
- Use the materials provided on Google Classroom to support students in their Self-study tasks.

**Enrichment Ideas**

<p style="text-align: center;"><b><u>Suggested reading</u></b></p> <ul style="list-style-type: none"><li>● Angel boy, Bernard Ashley</li><li>● Once, Morris Gleitzman</li><li>● Wenny has wings, Janet Lee Carey</li><li>● Old dog new tricks, Bali Rai</li><li>● My sister lives on the mantelpiece, Annabel Pitcher</li><li>● Looking at the stars, Jo Cotterill</li><li>● I predict a riot, Catherine Bruton</li><li>● An act of love, Alan Gibbons</li></ul>	<p style="text-align: center;"><b><u>Films &amp; documentaries</u></b></p> <ul style="list-style-type: none"><li>● Story of God with Morgan Freeman s1 ep5: 'Why does Evil Exist'?</li><li>● Bruce Almighty</li><li>● Evan Almighty</li><li>● The Finger of God</li></ul>
<p style="text-align: center;"><b><u>Cultural experiences</u></b></p> <ul style="list-style-type: none"><li>● National Trust opportunities</li></ul>	<p style="text-align: center;"><b><u>Things to see and do locally</u></b></p> <ul style="list-style-type: none"><li>● Local Mandirs</li><li>● Local churches ((KCC, Holyrood church, St Michael Church, Franciscan Friary)</li></ul>
<p style="text-align: center;"><b><u>Top 3 Websites</u></b></p> <ul style="list-style-type: none"><li>● <a href="http://www.truetube.co.uk">www.truetube.co.uk</a></li><li>● <a href="http://www.REquest.org.uk">www.REquest.org.uk</a></li><li>● <a href="https://www.natre.org.uk/about-natre/projects/spirited-arts/spirited-arts-2020/">https://www.natre.org.uk/about-natre/projects/spirited-arts/spirited-arts-2020/</a></li></ul>	<p style="text-align: center;"><b><u>Things we do</u></b></p> <ul style="list-style-type: none"><li>● Use Google maps to show location of Israel</li><li>● Teach Hindu worship using artefacts and food for students to taste (if they wish to).</li></ul>

# RE 5 YEAR JOURNEY



Department: **SCIENCE**

Periods per fortnight **6**  
Class Organisation: **Mixed Ability**

### **Course Overview:**

Students are able to develop their scientific knowledge and curiosity for the subject through both practical and content based lessons around 10 big ideas (Forces, Electromagnets, Energy, Waves, Matter, Reactions, Earth, Organisms, Ecosystems & Genes).

### **How students will be assessed**

Students' work is summatively assessed through Exit Tickets, which focus on developing subject knowledge and working scientific skills. Termly formative assessments including a formal year 8 written exam test both Scientific Knowledge and Working Scientifically skills.

A revision guide may be purchased from the department if not already done so in Year 7.

### **Self-study**

This is set every week from the start of the year on the Self-study Programme which will be shared via Google Classroom. Students will complete tasks to consolidate prior knowledge, enrich their scientific subject knowledge and challenge their understanding.

### **Parental support**

- Encourage your child to catch up with any work missed by using the Science Website to access lessons : <https://sites.google.com/wildern.org/science/home>
- Encourage your child to keep up to date with Science in the news.
- Support your child with revision and self-study tasks.
- Follow Blogs/Twitter/Science You-tube channels that enthuse students learning.

### **Enrichment Ideas**

<p style="text-align: center;"><b><u>Suggested reading</u></b></p> <ul style="list-style-type: none"><li>● Subscribe to 'Science + Nature'</li><li>● Horrible Science- By Nick Arnold (Good titles include Disgusting Digestion, Electrifying Electricity)</li><li>● 101 Great science experiments- Neil Ardley</li><li>● The Evolution of Calpurnia Tate – Jacqueline Kelly</li></ul>	<p style="text-align: center;"><b><u>Films &amp; documentaries</u></b></p> <ul style="list-style-type: none"><li>● Mythbusters</li><li>● The Martian</li><li>● Science experiments: Robert Winston Operation Ouch (CBBC)</li><li>● Bang goes the theory (BBC)</li></ul>
<p style="text-align: center;"><b><u>Cultural experiences</u></b></p> <ul style="list-style-type: none"><li>● Survival club</li><li>● Range of activities in British Science week</li><li>● Southampton Science and Engineering fair</li><li>● Join the STEM club</li></ul>	<p style="text-align: center;"><b><u>Things to see and do locally</u></b></p> <ul style="list-style-type: none"><li>● Planetarium, Chichester</li><li>● Blue reef Aquarium, Southsea</li><li>● Portsmouth Historic Dockyard</li><li>● Bursledon brick works</li><li>● Marwell zoo</li></ul>
<p style="text-align: center;"><b><u>Top 5 Websites</u></b></p> <ul style="list-style-type: none"><li>● <a href="https://www.sciencenewsforstudents.org/">https://www.sciencenewsforstudents.org/</a></li><li>● <a href="https://www.billnye.com/">https://www.billnye.com/</a></li><li>● <a href="https://science.howstuffworks.com/">https://science.howstuffworks.com/</a></li><li>● <a href="https://earthhow.com/">https://earthhow.com/</a></li><li>● <a href="https://www.natgeokids.com/uk/">https://www.natgeokids.com/uk/</a></li></ul>	<p style="text-align: center;"><b><u>Things we do</u></b></p> <ul style="list-style-type: none"><li>● British Science week</li><li>● Survival Club (Wednesdays 3.00pm – 4.00pm)</li><li>● Stem Club (Tuesday 3.00pm – 4.00pm)</li><li>● Winchester Science centre trips</li><li>● Longleat</li></ul>

Care, Opportunity, Quality **KS3 Year 7 Year 8** Every Student Matters, Every Moment Counts



Look deep into nature, and then you will understand everything better. Albert Einstein

To infinity... and beyond! Buzz Lightyear (Toy Story)

## Feedback Practice

### Feedback must cause thinking!



We believe marking and feedback should be used to identify students strengths and weaknesses and further students learning. We monitor students progress regularly and ensure students take ownership of the feedback they receive through meaningful reflection.

Feedback is given regularly through a variety of means and must always be acted upon by students in green pen.

- Staff will grade or mark a summative assessment at least three times a year, for which all students will receive a numerical score, percentage, and/or a WCS or GCSE grade within two weeks (At least twice for subjects at KS3 where students have 1 contact hour per fortnight).
- Current Levels of Performance are shared with students and parents via Wildern Assessment Data (WAD) two or three times a year depending on year group; this is to be recorded by students on their feedback fliers.
- Quizzes will be used frequently and marks recorded. These will include the testing of knowledge currently being taught, as well as previously taught knowledge.
- Literacy: identified errors will be circled sparingly (up to five) and identified with a sp/ww placed in the margin with the correct word written next to it, depending on the age and ability of the child. Students need to write out the correct spelling three times in the margin using look, cover, write, check.

Students work will be marked following the school's grading system and will be completed in a contrasting colour to student's work.

#### The following symbols will be used by students and teachers: -

<p>sp - incorrect spelling</p> <p>ww - wrong word used</p> <p>c - incorrect capitalisation</p> <p>// - new paragraph needed</p> <p>p - reconsider punctuation</p> <p>sc - poor sentence construction</p> <p>? - vague, unclear</p> <p> - target</p> <p> - reflection</p>	<p><u>Marking abbreviations:</u></p> <p>GCSE grade - 9 - 1</p> <p>VCERT/BTEC:- D*-P</p> <p>WCS:Wildern Current Step</p> <p>WST: Wildern Step Target</p>
--	---

Students' work will be assessed following the schools' grading system and will be completed in a contrasting colour to students' work.

Green pen will be used by students self-critiquing their own work, peer critiquing each other's work, and for all reflection tasks which could include: redrafting, reapplying knowledge, repeating a skill or practice, or facilitated research.



## Wildern Steps



### Wildern Steps

Our Wildern Steps link to GCSE grades. Students receive steps to show their current level of performance (WCS) on the curriculum content covered in Year 7 and 8 and then receive steps with GCSE grades in Year 9 – 11 often on new curriculum content.

Step	GCSE grade	Vocational grade
<b>33</b>	9	D*
<b>30-32</b>	8	D*
<b>27-29</b>	7	D
<b>25-26</b>	6	M
<b>23-24</b>	5	L2P
<b>20-22</b>	4	L2P
<b>16-19</b>	3	L1P
<b>12-15</b>	2	
<b>9-11</b>	1	
<b>0-8</b>	Not on the GCSE scale yet	

Students are tracked and given target bands across subjects in KS3 and this is refined at KS4 based on their KS2 scaled scores or teacher assessment as well as other baseline assessments in Year 7. Therefore it is an individual's progress towards their own targets that is important.

## WAD Reports

At Wildern we believe in building upon individual students' strengths and identifying areas for improvement. We monitor student progress through collecting Behaviours for Learning Colours and Wildern Current Step (WCS) grades at 2 key points in each academic year. These grades are transferred into the Student Planner during a tutor session as well as being sent to you electronically via email and via the INSIGHT parent app on the WAD & Reports Menu.

WAD is collected at 2 key points during Year 8. It will contain Behaviours for learning colours grade, a current Wildern step performance (WCS), on occasions an exam mark and a GCSE/Step Target Band based on prior academic attainment. This will be refined as they move through school.

Yr8 WAD1: Week beginning 15 January 2024

Yr8 WAD2: Sent home with the end of year report (The report will include subject exam results in steps and external GL assessment reports in English and Maths)

## Behaviours for Learning

Effective learning and teaching takes place where there is mutual respect, support, encouragement, security and independence and where all the members of the school share responsibility for developing this ethos successfully.

### **Encouraging a positive attitude to learning**

At Wildern School we want students to be willing to learn and ready to work to enable them to succeed. To support and encourage this to happen, students need to have a positive approach to their own learning. A copy of the Attitude grade criteria is within this booklet.

A positive and hardworking attitude can make the vital difference to student performance.

### **The EREF (Achievement and Behaviour) System**

At Wildern there are a wide range of rewards that a student can receive. In lessons students will most likely receive an Eref from their teacher. These come in the form of either Green (worth 2 points) or Gold (worth 4 points). These are awarded for excellent work and attitude in class as well as excellent pieces of self-study. There are a number of rewards that happen across the year group as a result of positive Eref scores. These can include recognition in assembly or class, postcards home, certificates, awards in celebration events, food vouchers and even lunch with the Headteacher!

However on occasions when a student breaks the school Discipline Policy a negative Eref will be written Amber (-1 points), Red (-2 points) or for the most serious issues, a Purple (-4 points).

These awards will be recorded automatically on the Insight portal (child and parent) and you will be able to see your child's current score each time you log onto the website. A student's overall points total will be used in supporting the Wildern House Championship competition.

### **Successful Wildern Students will be demonstrating the following behaviours for learning:**

- ▶ a) Being respectful to teachers and other learners in the classroom at all times
- ▶ b) b1) Being punctual to lessons to maximise learning
- ▶ b) b2) Attending all lessons to maximise learning
  
- ▶ c) Being always appropriately equipped and ready to learn
- ▶ d) Being fully engaged in lessons, listening carefully and following instructions
- ▶ e) Completing all class work on Non-Examined Assessment (NEA) to a required standard
- ▶ f) Completing all self-study on time and to a required standard
- ▶ g) Working independently and actively seeking out appropriate opportunities to maximise your potential
- ▶ h) Understanding and acting on feedback
- ▶ i) Preparing appropriately for assessments or Non-Examined Assessments (NEA)
- ▶ j) Using appropriate subject specific vocabulary and skills

### Behaviours for Learning Coding:

<b>Y (Yellow)</b>	Demonstrating the behaviours for learning that will support achieving your target
<b>T (Turquoise)</b>	One or more behaviours for learning need improvement to support reaching your target
<b>B (Blue)</b>	Not demonstrating the behaviours for learning to reach your target

The comment column of your report will indicate which element of the 10 behaviours for learning needs to be prioritised in each subject

## Communication with Parents

At Wildern School we use a range of opportunities to communicate with parents regarding the progress and achievement of your child. In terms of reporting to parents, we go beyond the statutory requirements and utilise Parents' Evenings, Wildern Attitude Data collections (WAD) and the end of year report to keep parents informed. This approach ensures that a continual view of a student's progress is communicated throughout the academic year and negates the need to solely rely on an End of Year Report. More information about these elements are outlined.

## Reporting to Parents

The report system has been reviewed and adapted with the implementation of the new behaviours for learning system. At Wildern we strive to report on more than just the statutory requirements of attendance and progress data.

At the end of the academic year, a report will be sent out to all parents. It will contain many of the below:

- Attendance and late figures
- Behaviour for learning data
- Reflections from the tutor
- A summary comment from the Director of Progress and Achievement
- Subject information – what has been covered
- Final WAD for the year

## Parents' Evening

These evenings are an opportunity to discuss your child's progress with the teacher of each subject being studied. Parents Evenings will be run virtually via an online booking forum. How this will work will be communicated with parents prior to each event.

Yr 8 Subject Parent's Evening - 1 February 2024

## Google Classroom and the Google Suite



All Students have a Google Classroom for each of their timetabled lessons populated with resources provided by their teachers. Google Classroom can also be accessed via the homepage of the school website or directly via <https://classroom.google.com>.

Students need to click on the nine dots once logged into their school email account to see all the Google apps including Google Classroom it should be on the top right corner and look like this



Some departments also set up additional classes and resources and invite students and staff into them. Students will have an invite on their homepage in Google Classroom.

Google Classroom is updated whenever staff post resources, questions, work or information online and will have specific information from teachers, Students will also receive an email when Google Classroom is updated and parents can opt to have a daily or weekly summary of the work status via Google Guardians.

Students also have access via their School email to the full suite of Google Education Apps via their Google Drive. Below are links to some helpful videos which show how to navigate Google Classroom as well as answer questions.

All self-study tasks are set via Google Classroom but can be completed in a variety of ways.

[Google Classroom Help YouTube Playlist](#)

[Google Drive Help YouTube Playlist](#)

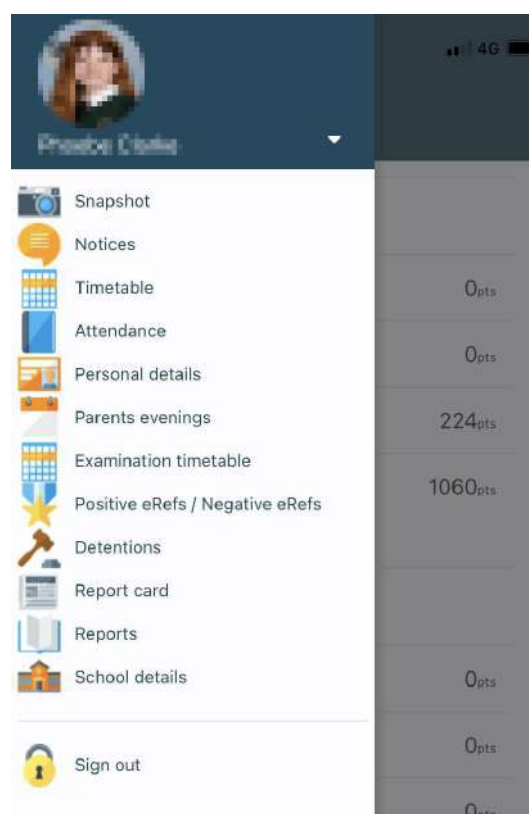
[IT Guide Information Booklet](#)

## Insight - Website/App

At Wildern we use the Insight Website to communicate and keep parents informed and up to date as possible on their child's progress whilst at Wildern School. All parents/guardians will be sent a welcome email in the summer holidays for the Insight Website or App. Parents can use Insight for the following:

- Check Student Attendance
- Check Student Achievement and Behaviour
- Check Student Timetables
- Update Student and Parent Information
- Report an Absence
- Check the School Calendar
- Receive Messages from the School
- Book Parents Evening appointments

In order to set up Insight access we need to have a parent's email address on our system. Once you receive an invitation you can then register and log on to the Insight website at [Insight.wildern.org](https://insight.wildern.org).





**“We often miss opportunity because it's dressed in overalls and looks like work”  
— Thomas A. Edison**

## School Trips and Enrichment Opportunities

We offer a vast array of school trips, after school clubs, and enrichment opportunities for students, including educational day trips and residential throughout the academic year.

At Wildern, we believe that students gain valuable learning experiences, from going on cultural visits overseas to visiting local points of interest and participating in local community projects. We believe that educational visits and out-of-school teaching can bring learning to life by deepening our young people's understanding of the environment, history and culture and improving their personal development. Therefore, we are always seeking to bring the world into the classroom and take our students beyond it.

The school offers an outstanding range of opportunities for students to extend their interests outside the classroom. Each curriculum area looks for trips that will help further students' interest in and understanding of key subject material, whilst the aim of other visits is to foster independence, leadership and curiosity.

### **Residential Trips**



Wildern School has always offered a fantastic range of domestic residential and international residential visits. Some of our trips are extremely well-established and have been offered for many years; students and former students will talk glowingly about their school visits to Austria, Belgium, the USA, and Germany. Some have an entirely sporting focus (for example, our skiing trips and water sports trips). Others have had a particular curriculum focus (for example, our trips run by the History or Geography departments). Others have had a cultural focus (for example our exchange trips to Germany and Portugal).

# Enrichment Opportunities and Competitions



## Wildern School - Extra curricular - Autumn 2023



	MONDAY	TUESDAY	WEDNESDAY	THURSDAY	FRIDAY
<b>SCIENCE</b>	<b>STEM club</b> (all yrs) 306, 3-4pm <b>KS3 drop-in</b> Break 1 912 <b>Yr 10 drop-in</b> 912 3-4pm	<b>KS3 drop-in</b> Break 1 912	<b>Survival club</b> (all yrs) 910, 3-4pm (Starting after half term) <b>KS4 drop-in</b> Break 1 912 <b>KS3 English/Maths/Science study support</b> Red Dining Hall, 3-4pm	<b>KS4 drop-in</b> Break 1 912	
<b>MATHS</b>	<b>Chess Club</b> (all yrs) 302, Break 2 <b>Maths drop-in</b> (all yrs) 312, 3-4pm	<b>Maths drop-in</b> (all yrs) 312, 3-4pm	<b>Sparx Clinic</b> (all years), 901 Break 2 <b>Maths drop-in</b> (all yrs) 312, 3-4pm <b>KS3 English/Maths/Science study support</b> Red Dining Hall, 3-4pm	<b>Practice Paper Support</b> (Y11) 320, Break 2 <b>Maths drop-in</b> (all yrs) 312, 3-4pm	<b>Sparx Clinic</b> (all years), 901 Break 1 <b>Chess Club</b> (all yrs) 302, Break 2 <b>Maths drop-in</b> (all yrs) 312, 3-4pm
<b>ENGLISH</b>	<b>Y11 Drop in session</b> 902 3-4pm <b>KS3 Book club</b> (yrs 7&8) LRC, 3-4pm	<b>KS4 Book club</b> (yrs 9-11) D@rt, 3-4pm <b>The Vox Student Newspaper</b> 901, Break 2 (all years) <b>Spilling Ink</b> (yrs 7-11) 909, 3:05-4pm	<b>Sparx English clinic</b> (Y7 and Y8) break 2 - 901 <b>KS3 English/Maths/Science study support</b> Red Dining Hall, 3-4pm	<b>British Sign Language</b> (all years), 904, Break 2	<b>Quotation Club</b> (yr 11) Literature exploration for the top grades at GCSE 906, Break 2 <b>Sparx English clinic</b> (Y7 and Y8) break 1 - 901

Every Student Matters, Every Moment Counts



## Wildern School - Extra curricular - Autumn 2023



	MONDAY	TUESDAY	WEDNESDAY	THURSDAY	FRIDAY
<b>COMMUNICATION STUDIES</b>		<b>Code Club</b> (yr7) 675, 3-4pm			
<b>TECHNOLOGY</b>	<b>Costume club</b> 515, 3:15pm to 4:15pm <b>STEM club</b> (KS3) 306, 3-4pm		<b>KS3 Cooking Club</b> (KS3) 512, 3-4:30pm (once a month, date listed in Student Wildern Weekly)		
<b>MFL</b>		<b>Language Clinic</b> Open to all, Break 2 in block 1	<b>Language Leaders</b> (yrs9&10), 102, Break 2 <b>Translation Club</b> (year 8 French and Spanish) Break 2 in 104	<b>Language Clinic</b> Open to all, Break 2 in block 1	<b>Year 11 Speaking Club</b> (French, German, Spanish) Break 2 in block 1

Every Student Matters, Every Moment Counts





## Wildern School - Extra curricular - Autumn 2023



	MONDAY	TUESDAY	WEDNESDAY	THURSDAY	FRIDAY
<b>HUMANITIES</b>				<i>Geography Club</i> (year 7) 507, Break 2	
<b>STUDY SUPPORT</b>	<i>LRC</i> (all yrs) Open 8-8:30am, Break 1, Break 2 and 3-4pm  <i>Learning Support</i> 668, Break 1 and 2	<i>LRC</i> (all yrs) Open 8-8:30am, Break 1, Break 2 and 3-4pm  <i>Learning Support</i> 668, Break 1 and 2	<i>LRC</i> (all yrs) Open 8-8:30am, Break 1, Break 2 and 3-4pm  <i>Learning Support</i> 668, Break 1 and 2	<i>LRC</i> (all yrs) Open 8-8:30am, Break 1, Break 2 and 3-4pm  <i>Learning Support</i> 668, Break 1 and 2	<i>LRC</i> (all yrs) Open 8-8:30am, Break 1, Break 2 and 3-4pm  <i>Learning Support</i> 668, Break 1 and 2
<b>FOCUS GROUPS</b>	<i>Careers</i> Room 680, Break 2  <i>Diversity</i> CPD room block 9, Break 2	<i>Ed Tech</i> Room 211, Break 2	<i>Rights, Respect and Community</i> 706, Break 1  <i>Mindset Builders</i> Room 316, Break 2	<i>Eco group</i> TBC	

*Every Student Matters, Every Moment Counts*



## Wildern School - Extra curricular - Autumn 2023









	MONDAY	TUESDAY	WEDNESDAY	THURSDAY	FRIDAY
<b>ART / PHOTOGRAPHY</b>	<i>Art Club</i> (yrs 7, 8 & 9) 215, 3-4pm				
<b>DANCE</b>	<i>Senior Bare Roots (by invite only)</i> Da1 (3-4.15pm) <i>Junior Bare Roots (by invite only)</i> MUH (3-4.15pm)	<i>Year 7 Dance Club</i> MUH, 3-4:15pm <i>DanceLive!</i> (Nov - April) Gymnasium 3-5pm	<i>Dynamism Boys Dance</i> Da1 (3-4.15pm) <i>Year 8 Dance Club</i> MUH (3-4.15pm)		
<b>DRAMA</b>	<i>School Show Rehearsals</i> Aud 1, 3-5pm <i>Yr 7 &amp; 8 Drama Club</i> Aud 2, 3-4pm	<i>School Show Rehearsals</i> Aud 1, 3-5pm			<i>School Show Rehearsals</i> Aud 1, 3-5pm
<b>MUSIC</b>	<i>KS3 Choir (Yr 7 &amp; 8)</i> Mu2, AM Reg <i>KS4 Choir (Yr 9, 10 &amp; 11)</i> Mu1, AM Reg	<i>Wildern Music Ambassadors</i> Mu1, AM Reg <i>Year 8 Enrichment</i> Dms, 3-4pm <i>Jazz Band (all yrs)</i> Mu2, 3-4pm <i>Brass Group</i> Mu2, Break 2	<i>String Group</i> Mu1, AM Reg <i>Boys Choir</i> Mu2, AM Reg <i>Theory Club</i> Mu1, Break 1	<i>Young Voices Choir</i> Mu1, AM Reg <i>Year 7 Music Enrichment</i> MU1, AM Reg (from January) <i>Advanced Orchestra</i> Mu2, AM Reg	<i>Training Orchestra</i> Mu1, AM Reg <i>Percussion Club</i> Mu2, AM Reg <i>Ukulele Group</i> Mu1 - Break 1



*Every Student Matters, Every Moment Counts*



# EVERY MOVEMENT MATTERS

Mon	<b>All Girls Rugby Club</b>  @ RUGBY PITCH Team Manager/Coach: Mr Wainwright	<b>Year 9 Boys Rugby Club</b>  @ RUGBY PITCH Team Manager/Coach: Mr Kinnaird	<b>Year 8 Boys Football Club</b>  @ ASTRO or JNR FOOTBALL PITCH Team Manager/Coach: Mr Sutherland	<b>Senior Girls Football Club</b>  @ MUGA or SNR FOOTBALL PITCH Team Manager/Coach: Miss Clarke	<b>Fitness Club (Y10 Only)</b>  @ Fitness Suite Glenn/ Josh (Finishes at 4pm)
Tue	<b>Seniors Basketball Club</b>  @ SPORTS HALL Team Manager/Coach: Mr Martin	<b>Junior &amp; Senior Netball Club</b>  @ NETBALL COURTS Team Manager/Coach: Mrs Drayton & Mrs Fearon	<b>All Years Hockey Club</b>  @ ASTRO Team Manager/Coach: Mr Ryan-Heaney	<b>Year 7 Boys Football Club</b>  @ MUGA or JNR FOOTBALL PITCH Team Manager/Coach: Mr Wainwright	<b>Dance Live Rehearsals</b> @ GYMNASIUM & HALL Team Manager/Coach: Mrs Gates
Wed	<b>Junior Basketball Club</b>  @ SPORTSHALL Team Manager/Coach: Mr Martin	<b>Olympic Weightlifting Club</b>  @ GYMNASIUM Team Manager/Coach: Mr Sutherland	<b>Y9 Boys Football Club</b>  @ ASTRO or SNR FOOTBALL PITCH Team Manager/Coach: Mr Wood	<b>Junior Girls Football Club</b>  @ MUGA or JNR FOOTBALL PITCH Team Manager/Coach: Mrs Drayton	<b>Fitness Club (Y11 Only)</b>  @ Fitness Suite Glenn/ Josh (Finishes at 4pm)
Thu	No Clubs due to School Meeting(s)				
Fri	<b>Junior Rugby Club</b>  @ RUGBY PITCH Team Manager/Coach: Mr Sutherland	<b>All Years Badminton Club</b>  @ SPORTS HALL Team Manager/Coach: Mr Wainwright	<b>Year 10 Boys Football Club</b>  @ ASTRO or JNR FOOTBALL PITCH Team Manager/Coach: Mr Collings	<b>Year 11 Boys Football Club</b>  @ MUGA or SNR FOOTBALL PITCH Team Manager/Coach: Mr Morrison & Mr Smith	<b>Information</b> Clubs run from 3:15pm-4:15pm  Junior = Y7-Y8 Senior = Y9-Y11

# EVERY ACTION COUNTS

# The Wildern House Championship

The Wildern House Championship is a whole school competition that runs all year from the first day of term in September all the way through to July. The Championship is spread across all year groups, with 2-3 tutor groups from each year per house. Students stay with their house for the duration of their time at Wildern.



The House Championship is designed to allow all students of all abilities, aptitude and talent to participate in events across the year. **Every member of the school is part of a house**, including staff (except headteacher and House Championship Coordinator), which aims to build a community spirit with opportunity for all to participate individually and part of a team. Every house has two house captains who are role models and leaders amongst their peers to help support and run house events. House events are run as stand alone events, as well as within lessons across all subjects and as part of all the school charity events.

There are 6 houses in total and the heads of houses are:

<b>ALBA</b>	<b>BEDFORD</b>	<b>DRISCOLL</b>	<b>JUBILEE</b>	<b>PAXTON</b>	<b>SOVEREIGN</b>
<b>Mr Knight (Orange)</b>	<b>Mrs Thornton (Green)</b>	<b>Miss Jones (Yellow)</b>	<b>Mrs Wheeler (Purple)</b>	<b>Mrs Warner (Blue)</b>	<b>Mrs K Thomas (Red)</b>

### Points

Points are earned through student attendance, e-refs and points from House events. The house with the most points at the end of the year wins the House Championship trophy and gets to enjoy a celebration lunch.

E.Ref Colour	Points
GOLD	4
GREEN	2
AMBER	-1
RED	-2
PURPLE	-4

Attendance	Points
100% Term	4
100% Year	10 (Bonus)

Calendar Event Points
Bronze: 100, 70, 50, 30, 20, 10
Silver: 200, 140, 100, 60, 40, 20
Gold: 400, 280, 200, 120, 80, 40

“September marks a new beginning of the championship, so get involved, and good luck!!”  
Mrs Poyner

## Head Student Team

Lead the prefect teams, organise rotas and team involvement in events, regularly meet the Head Teacher, attend special events, carry out duties



**Senior Prefects** Play a significant role in one of the key areas of impact, attend Senior Prefect team meetings, lead on special events like Awards or Induction Evening, carry out specific duties

### Key Areas of Impact

Focus Groups

Year 7-8 Queue Duties

Charity

LR C

**Prefects** Play a role in one of the key areas of impact, support events like Induction Day and Awards Evening, carry out duties.

Department Support

Education for Life

Learning Support  
*(new)*

Prefect Points  
*(new)*

### Student Leaders (Curriculum)

#### Focus Groups

All students can attend a weekly Focus group during tutor time. Members from each Focus group to represent their group at termly meetings.

- RRC Leaders
- Mindset builders
- Eco Leaders
- Ed-Tech Leaders
- Careers Leaders
- Diversity Leaders

#### Learning Leaders

- Year 8 students can apply to be a Learning Leader to observe teaching and learning across the school
- Learning Leaders to assist with school strategies e.g. the Wildern Attributes
- Learning Leaders can also be used to assist department development, e.g. Language Leaders.

#### Transition Leaders

- Year 8: Transition leaders for Year 7 students to assist with tutor time activities, the running of the 'Big Room' and Induction Day
- Years 9 & 10: Transition Leaders to support students in lower years
- Parent tours

#### School Leaders

- Students to be ambassadors for the school e.g. providing school tours
- Representing the school at community events e.g. The Big Clean

#### Diversity Leaders

- Students from all Year groups are welcome to apply
- Running campaigns e.g. Anti-bullying month Promote and model tolerance and respect amongst staff and students

***'Every student matters, every voice counts.'***

There are other aspects of student leadership that all students have the opportunity to be a part of Department and Year team; House Captains; Anti-bullying Ambassadors; student as evaluators; being tour guides to visitors; getting involved in school events such as the Big Clean; being on interview panels.

## Wildern Colours

Wildern Colours is an opportunity for students to be recognised for their hard work and determination in both PE and Creative Arts.

The Creative Arts and PE Colours:

- Acknowledge and value the commitment students give to Creative Arts and/or PE.
- Give a visible reflection of the pride we have when you represent us with a badge on the school jumper for Half Colours and a red tie with the Colours symbol for Full Colours.
- Recognise that students have gone above and beyond in these subject areas.

Half Colours will be awarded to those students who have made a commitment to these areas over two years. Half Colours will be given for regular commitment to and representation at Creative Arts and/or PE events that demonstrates dedication, determination, passion and pride for these subjects at Wildern. The earliest Half Colours can be achieved is at the end of Year 8.

Full Colours are an incredibly prestigious award and will be achieved by those students who have made a consistent commitment to these areas over four years. Full Colours will be given at the end of Year 10 for regular commitment to and representation at Creative Arts and/or PE events throughout a student's time at Wildern that demonstrates dedication, determination, passion and pride for these subjects.

For more information on how these can be obtained students should see their Creative Arts and/or PE teacher.

A celebration event will be hosted at the end of each year where these badges (Half Colours) and tie (Full Colours) will be awarded.



# Charities

Wildern School takes pride in supporting its community. Across the year we raise money for a number of local, national and international charities, building on our responsibilities as a Rights Respecting School.

This year 2023-2024 , our focus will be:

## Local Charities

- Southampton City Mission
- Basics Food Bank Appeal
- Wessex Cancer Trust

## National Charities

- Rotary Shoe box Appeal
- Unicef Soccer Aid

## International Charities

- Cancer Research
- Save the Children
- Comic Relief



**Rotary Shoebox Scheme**  
*"Spreading a little Happiness"*



# Careers Support

## Curriculum support

Specific careers lessons take place in each year of Wildern.

### Year 8

Careers lessons remain a part of the 'Education for Life' lessons and specifically look at ways of supporting students with their pathway choices by giving them ideas about how different subjects will be useful for different careers. This is complemented by dedicated explanatory sessions in the Tutor Programme. Students will have access to a range of online careers tools. All students in Year 8 will get the opportunity to take part in a careers speed networking event. This allows students to meet local businesses and gain invaluable information about several different career sectors.



### Further support

A careers library is available in the Learning Resource Centre. Students can go there at any time to access the information that will help them as they move on from Wildern. A careers focus group also meet regularly and help to form and test careers initiatives and ideas.

We have a careers advisor, Ian Henser, who works within the careers area in block 3 on a Monday, Tuesday and Wednesday. He will meet all students in Year 11 at least once and have 1-2-1 interviews with all of them. He will also meet with identified Year 10 students during the summer term. During the pathways process in Year 8 Ian will also meet with identified individuals and groups of students to support them with making GCSE option choices. Ian is available Monday, Tuesday and Wednesday for drop in sessions: available at break, lunch and after school.

As above all students within the school will have access to online careers tools which can be used both inside and outside of school. These sites have key information about different career sectors, examination requirements for different careers and are easy to navigate around for information about all types of careers options options and choices. Finally, students might wish to look over our alumni posters on display for all at the top of block 9 and in block 3.

Wildern school works closely with the Careers and Enterprise company to ensure it regularly assesses and evaluates its provision with the **Gatsby benchmarks** for good career guidance. This is reviewed at least annually, ensuring the programme is up to date and relevant. The School-wide Careers policy is reviewed regularly too, with the next review due: October 2023



Follow @wilderncareers on twitter or email [careers@wildern.org](mailto:careers@wildern.org)

# The Wildern Careers Ladder: Your journey from Year 7 to Year 11

## Post Wildern –

Join our Wildern Alumni network through the school website, and also access careers advice and guidance for continued support.

## Year 11 –

College Assemblies – with visiting Wildern Alumni  
Careers Fair!

WINK: Parents info after the careers fair

1 to 1 sessions with careers advisor

Help with Post-16 applications in My Future Education for Life Sessions

## Year 10 –

Careers Fair!

WINK: Parents info after the careers fair

CV writing and destination sessions in Education for Life.

Practice Interview preparation sessions

Practice Interviews with Local Businesses

College Taster Days

Experience of a workplace



## Year 9 –

Enterprise sessions in tutor time

Work Skills day – focusing on developing transferable work skills

Experience of a Workplace Launch Wink

## Year 8 –

Careers and Employers ‘Speed Networking’ event

Opportunity to meet our careers advisor regarding Pathways choices

## Year 7 –

Year 7 Education for Life lessons

Launch of Careerpilot careers website sessions in tutor time – and access to this provision throughout your whole 5 years at Wildern!

Enterprise ‘Dragons Den’ themed Day



# The Learning Resources Centre (Library)

## When is the LRC open?



Monday	8.00am to 5.00pm
Tuesday	8.00am to 5.00pm
Wednesday	8.00am to 4.00pm
Thursday	8.00am to 4.00pm
Friday	8.00am to 5.00pm

**Please note that students should have their Student Planner with them at all times.**

The LRC is open at break, lunchtimes, before and after school, although times may vary. You may borrow or return items during these times. However, due to occasional meetings/events, the LRC may be closed after school at short notice.

## Who's Who?

Mrs Searle, Senior LRC Assistant

Miss Spraggs, LRC Assistant

Student Librarian Team, led by Year 11 Prefect Librarian



## How many items may students borrow?

They may borrow up to 4 items.

- **Books** are issued for 3 weeks. If you are still reading the book when the 'return date' is due, bring it to the LRC and we will reissue it to you.
- **DVDs** are issued overnight and must be returned the following day (if borrowed on a Friday, items must be returned the following Monday).

## What happens if students return their books late?

It is the student's responsibility to ensure that books are returned to the LRC by the due date (stamped inside the book). It is at the discretion of the LRC staff to log an amber or red referral if books are overdue.

## Is there a charge for DVDs

No, but a fine of £1 per school day applies if they are returned late.

## Can students reserve items?

Yes. If a book is on loan, you can reserve it on the computer. Please ask at the LRC reception.

## Can students recommend a book/DVD?

Yes please! We welcome your ideas and will consider the purchase of any sensible suggestions. If we do not have books on a subject you are interested in, please let us know by completing a suggestion slip and placing it in the box on the desk.

## Can students use the computers?

There are several computers in the LRC and everyone has access to these. Please note, however, that computers must be booked on the day you wish to use them and are to be used for self-study only.

## Online Library

The LRC has gone online. You can log in with your Wildern email address and date of birth - DDMMYYYY. Select your book and select reserve at school.

## What help can students get in the LRC?

The LRC staff and team of student librarians can assist in finding information for projects and self-study. We can also help with book selection and what to read next.

## What else goes on in the LRC?

- **LRC Reading Tournament** (Year 7) - Read and review books in the LRC. Work towards bronze, silver and gold certificates. Obtain gold erefs for each certificate awarded. Reviews are displayed around the LRC for students to read.
- **LRC Loyalty Bookmark** (Years 8, 9, 10 and 11) - These are stamped each time a student takes a book out from the LRC. Collect 6 stamps and be awarded a gold eref.
- **Children's Book Award** - (All years) - Read and review proof copies of titles that we receive from publishers. Reviews are forwarded to publishers for their interest. Gold erefs issued.
- **Reading Buddies** - (Years 7 & 10) - Year 10 students sit with Year 7s and listen/support with their reading. This is held once a week during tutor time.
- **SIG (School Improvement Group) Reading Group** - Meet in the LRC throughout the year to read and discuss group sets of books.
- **Blind Date with a Book** - (All years) - Held in February, students take out one of our books which is wrapped up with just the genre written on it. Students are then asked to unwrap, read and review it. Participants entered into a prize draw.
- **LRC Reading for Fun Fortnight** - (All years) - Held in March, **incorporating World Book Day**. When students take out a book during the fortnight, they are issued with a raffle ticket and entered into a prize draw. World Book day £1 vouchers are issued to students on World Book Day, giving them £1 off their purchase in book stores. Whole school reading promotions also take place at this time.
- **Scholastic Book Club** - (All Years) - Book Club brochures are distributed to students throughout the year. Scholastic publishers offer books at greatly reduced prices.
- **LRC Board Games Club** - (All years) - Held during Friday lunchtimes. A great way for students to make new friends.
- **Student Librarians** - We have a team of dedicated student librarians who support the LRC at break and lunchtimes. Vacancies are offered to year 7 students in October, where they are trained in various aspects of a librarian role, as well as confidence and team building. Most students stay with the LRC throughout their years at Wildern, until they leave in Year 11. Student Librarians can work towards obtaining 'Superstar Librarian' awards as well as 'Librarian of the Year' award.
- **Current Interest Promotions** - We are constantly updating our displays in the LRC to reflect what is happening around us, whether it be curriculum based, current news, sporting tournaments or the latest blogger!
- **Author Promotions** - We rotate our 'Author Focus' displays regularly to create interest and discussion on individual authors.
- **Author events** - Occasionally, we are asked by local bookstores to host author events at Wildern and are also invited to attend children's author events at local schools.
- **WINK Reading** - Parents are invited to attend a WINK event in the LRC to hear staff talking about the importance of reading and how to encourage their child to read more.

# Staff Structure

